



LED STRIPS

FLEXIBLES LED
LEDSTRIPS
LED-LEISTEN
CINTAS DE LEDS



LED STRIP - 3 m

FR RUBAN LED - 3 m
NL LED-STRIP - 3 m
DE LED-LEISTE - 3 m
ES CINTA DE LEDS - 3 m



LD21003



5 411244 213005



LED STRIP - 5 m

FR RUBAN LED - 5 m
NL LED-STRIP - 5 m
DE LED-LEISTE - 5 m
ES CINTA DE LEDS - 5 m



LD21005



5 411244 215009



RGB LED STRIP - 3 m

FR RUBAN LED RGB - 3 m
NL RGB-LED-STRIP - 3 m
DE RGB-LED-LEISTE - 3 m
ES CINTA DE LEDS RGB - 3 m



LD11003



5 411244 113008



RGB LED STRIP - 5 m

FR RUBAN LED RGB - 5 m
NL RGB-LED-STRIP - 5 m
DE RGB-LED-LEISTE - 5 m
ES CINTA DE LEDS RGB - 5 m



LD11005



5 411244 110052



LED STRIP - LENGTH 4 x 30 cm - WARM WHITE

FR RUBAN LED - LONGUEUR 4 x 30 cm - BLANC CHAUD
NL LED-STRIP - LENGTE 4 x 30 cm - WARMWIT
DE LED-LEISTE - LÄNGE 4 x 30 cm - WARMWEIS
ES CINTA DE LEDS - LONGITUD 4 x 30 cm - COLOR BLANCO CÁLIDO

length: 4 x 30 cm • power supply: 12 V power adapter • colour: warm white



LD41001



5 411244 410107



RGB LED STRIP - 4 x 30 cm

FR RUBAN LED RGB - 4 x 30 cm
NL RGB-LED-STRIP - 4 x 30 cm
DE RGB-LED-LEISTE - 4 x 30 cm
ES CINTA DE LEDS RGB - 4 x 30 cm

IR controller • RGB remote • 3 extension cables • RGB multicolour

length: 4 x 30 cm • power supply: 12 V power adapter



LD41002



5 411244 410206



RGB LED STRIP - 4 x 30 cm - IP 66

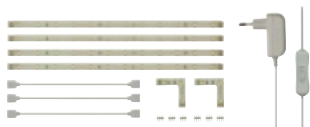
FR RUBAN LED RGB - 4 x 30 cm - IP 66
NL RGB-LED-STRIP - 4 x 30 cm - IP 66
DE RGB-LED-LEISTE - 4 x 30 cm - IP 66
ES CINTA DE LEDS RGB - 4 x 30 cm - IP 66



LD42001



5 411244 420014



KIT WITH FLEXIBLE LED STRIP AND POWER SUPPLY - WHITE - 4 x 30CM - 12 VDC



FR RUBANS À LEDS FLEXIBLES ET ALIMENTATION EN KIT - BLANC - 4 x 30 cm - 12 Vcc

NL SET MET FLEXIBELE LEDSTRIPS EN VOEDING - WIT - 4 x 30 cm - 12 VDC

DE SATZ MIT FLEXIBLER LED-LEISTE UND NETZTEIL - WEIß - 4 x 30 cm - 12 VDC

ES JUEGO CON CINTA DE LEDS FLEXIBLE Y ADAPTADOR DE RED - COLOR BLANCO - 4 x 30 cm - 12 VDC

each strip contains 12 high brightness LEDs (type 3528) ● contains: ○ 30 cm LED strip: 4 pieces ○ LED strip corner: 2 pieces ○ connectors: 6 pieces ○ cables: 3 pieces ○ power adapter: 1 piece ● self-adhesive

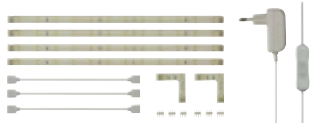
IP rating: IP61 ● coating: PU ● colour: white ● colour temperature LED chip: 6000 - 6500 K ● CRI: > 80 ● power consumption: 4 W ● viewing angle: 120° ● LED spacing: 2.5 cm ● power supply: 12 VDC / 6 W (adapter included) ● dimensions: 3 m x 10 mm ● weight: 220 g (set)



LEDS07W



5 410329 564520



KIT WITH FLEXIBLE LED STRIP AND POWER SUPPLY - WARM WHITE - 4 x 30CM - 12 VDC



FR RUBANS À LEDS FLEXIBLES ET ALIMENTATION EN KIT - BLANC CHAUD - 4 x 30 cm - 12 Vcc

NL SET MET FLEXIBELE LEDSTRIPS EN VOEDING - WARMWIT - 4 x 30 cm - 12 VDC

DE SATZ MIT FLEXIBLER LED-LEISTE UND NETZTEIL - WARMWEIß - 4 x 30 cm - 12 VDC

ES JUEGO CON CINTA DE LEDS FLEXIBLE Y ADAPTADOR DE RED - COLOR BLANCO CÁLIDO - 4 x 30 cm - 12 VDC

each strip contains 12 high brightness LEDs (type 3528) ● contains: ○ 30 cm LED strip: 4 pieces ○ LED strip corner: 2 pieces ○ connectors: 6 pieces ○ cables: 3 pieces ○ power adapter: 1 piece ● self-adhesive

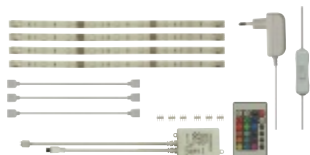
IP rating: IP61 ● coating: PU ● colour: warm white ● colour temperature LED chip: 3000 - 3500 K ● CRI: > 80 ● power consumption: 4 W ● viewing angle: 120° ● LED spacing: 2.5 cm ● power supply: 12 VDC / 6 W (adapter included) ● dimensions: 30 cm x 10 mm ● weight: 220 g (set)



LEDS07WW



5 410329 564551



KIT WITH FLEXIBLE LED STRIPS, RGB CONTROLLER AND POWER SUPPLY - RGB - 4 x 30CM - 12 VDC



FR RUBANS À LEDS FLEXIBLES, CONTRÔLEUR RVB ET ALIMENTATION EN KIT - RVB - 4 x 30 cm - 12 Vcc

NL SET MET FLEXIBELE LEDSTRIPS, RGB-CONTROLLER EN VOEDING - RGB - 4 x 30 cm - 12 VDC

DE SATZ MIT FLEXIBLER LED-LEISTE, RGB-CONTROLLER UND NETZTEIL - RGB - 4 x 30 cm - 12 VDC

ES JUEGO CON CINTA DE LEDS FLEXIBLE, CONTROLADOR RGB Y ADAPTADOR DE RED - RGB - 4 x 30 cm - 12 VDC

each strip contains 9 high brightness RGB LEDs (type 5050) ● can be cut every 3 LEDs (10 cm) ● contains: ○ 30 cm LED strip: 4 pieces ○ LED strip corner: 2 pieces ○ connectors: 6 pieces ○ cables: 3 pieces ○ power adapter: 1 piece ○ RGB controller with IR remote: 1 piece ● RGB controller with different programs: ○ fixed colour ○ animated program ● self-adhesive

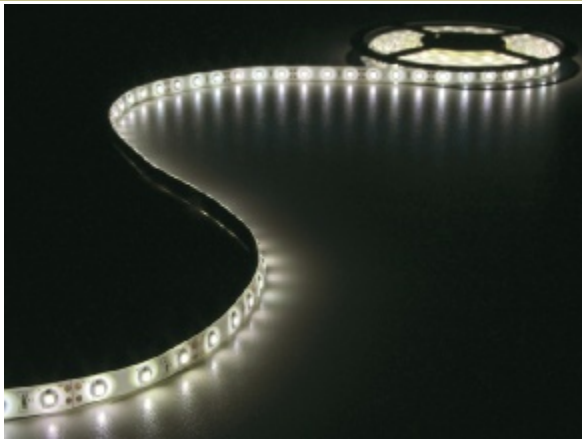
IP rating: IP61 ● coating: PU ● colour: RGB ● power consumption: 6 W ● viewing angle: 120° ● LED spacing: 3.3 cm ● power supply: 12 VDC / 6 W (adapter included) ● dimensions: 30 cm x 10 mm ● weight: 300 g (set)



LEDS08RGB



5 410329 564605



KIT WITH FLEXIBLE LED STRIP AND POWER SUPPLY - WHITE - 180 LEDs - 3 m - 12 VDC



FR: JEU DE FLEXIBLE LED ET ALIMENTATION - BLANC - 180 LEDs - 3 m - 12 Vcc

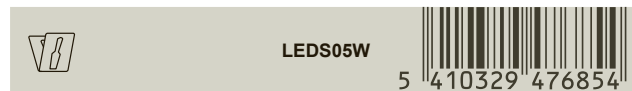
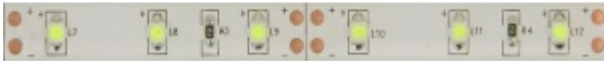
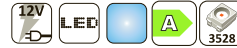
NL: SET MET FLEXIBELE LEDSTRIP EN VOEDING - WIT - 180 LEDs - 3 m - 12 VDC

DE: SATZ MIT FLEXIBLER LED-LEISTE UND NETZTEIL - WEISS - 180 LEDs - 3 m - 12 VDC

ES: JUEGO CON CINTA DE LEDs FLEXIBLE Y ADAPTADOR - BLANCO - 180 LEDs - 3 m - 12 VDC

flexible PCB (white) • contains 180 high brightness LEDs (type 3528) • common anode:
○ black wire: ground ○ red wire: 12 VDC • can be cut every 3 leds (5 cm) • power supply included • self-adhesive

IP rating: IP61 • coating: epoxy • colour: white • colour temperature: 6000 - 6500 K • light output: ± 210 lm/m • power consumption: 12 W • viewing angle: 120° • LED spacing: 16.5 mm • current: 1 A • power supply: 12 VDC / 18 W (adapter included) • dimensions: 3 m x 8 mm • weight: ± 350 g



KIT WITH FLEXIBLE LED STRIP AND POWER SUPPLY - WARM WHITE - 180 LEDs - 3 m - 12 VDC



FR: JEU DE FLEXIBLE LED ET ALIMENTATION - BLANC CHAUD - 180 LEDs - 3 m - 12 Vcc

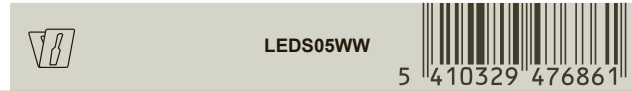
NL: SET MET FLEXIBELE LEDSTRIP EN VOEDING - WARMWIT - 180 LEDs - 3 m - 12 VDC

DE: SATZ MIT FLEXIBLER LED-LEISTE UND NETZTEIL - WARMWEISS - 180 LEDs - 3 m - 12 VDC

ES: JUEGO CON CINTA DE LEDs FLEXIBLE Y ADAPTADOR - BLANCO CÁLIDO - 180 LEDs - 3 m - 12 VDC

flexible PCB (white) • contains 180 high brightness LEDs (type 3528) • common anode:
○ black wire: ground ○ red wire: 12 VDC • can be cut every 3 leds (5 cm) • power supply included • self-adhesive

IP rating: IP61 • coating: epoxy • colour: warm white • colour temperature: 3000-3500 K • light output: ± 170 lm/m • power consumption: 12 W • viewing angle: 120° • LED spacing: 16.5 mm • current: 1 A • power supply: 12 VDC / 18 W (adapter included) • dimensions: 3 m x 8 mm • weight: ± 350 g



KIT WITH FLEXIBLE LED STRIP AND POWER SUPPLY - BLUE - 180 LEDs - 3 m - 12 VDC



FR: JEU DE FLEXIBLE LED ET ALIMENTATION - BLEU - 180 LEDs - 3 m - 12 Vcc

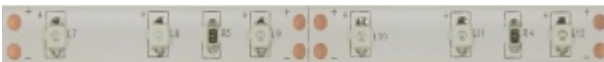
NL: SET MET FLEXIBELE LEDSTRIP EN VOEDING - BLAUW - 180 LEDs - 3 m - 12 VDC

DE: SATZ MIT FLEXIBLER LED-LEISTE UND NETZTEIL - BLAU - 180 LEDs - 3 m - 12 VDC

ES: JUEGO CON CINTA DE LEDs FLEXIBLE Y ADAPTADOR - AZUL - 180 LEDs - 3 m - 12 VDC

flexible PCB (white) • contains 180 high brightness LEDs (type 3528) • common anode:
○ black wire: ground ○ red wire: 12 VDC • can be cut every 3 leds (5 cm) • power supply included • self-adhesive

IP rating: IP61 • coating: epoxy • colour: blue • wavelength: 465 ~ 475 nm • light output: ± 75 lm/m • power consumption: 12 W • viewing angle: 120° • LED spacing: 16.5 mm • current: 1 A • power supply: 12 VDC / 12 W (adapter included) • dimensions: 3 m x 8 mm • weight: ± 350 g





KIT WITH FLEXIBLE LED STRIP, CONTROLLER AND POWER SUPPLY - RGB - 90 LEDs - 3 m - 12 VDC



FR ENSEMBLE DE BANDE À LED FLEXIBLE, CONTRÔLEUR ET ALIMENTATION - RVB - 90 LEDS - 3 m - 12 Vcc

NL KIT MET FLEXIBELE LEDSTRIP, CONTROLLER EN VOEDING - RGB - 90 LEDS - 3 m - 12 VDC

DE SATZ MIT FLEXIBLER LED-LEISTE, CONTROLLER UND NETZTEIL - RGB - 90 LEDs - 3 m - 12 VDC

ES JUEGO CON CINTA DE LEDS FLEXIBLE, CONTROLADOR Y ADAPTADOR DE RED - RGB - 90 LEDS - 3 m - 12 VDC

flexible PCB (white) • contains 90 high brightness LEDs (type 5050) • RGB controller with different programs: ◦ fixed colour ◦ animated program • controlled through infrared remote (incl.) • common anode: ◦ black wire: ground ◦ red wire: 12 VDC • can be cut every 3 LEDs (10 cm) • power supply included • self-adhesive

IP rating: IP61 • coating: epoxy • colour: red-green-blue • wavelength: red: 615 ~ 630 nm, green: 520 ~ 530 nm, blue: 465 ~ 470 nm • light output: 390 lm/m • power consumption: 15 W (red 6 W, green 5 W, blue 4 W) • viewing angle: 120° • LED spacing: 33 mm • current: 1.2 A • power supply: 12 VDC / 24 W (adapter included) • dimensions: 3 m x 10 mm • weight: 500 g



LEDS06RGB



KIT WITH FLEXIBLE LED STRIP AND POWER SUPPLY - WHITE -150 LEDs - 5 m



FR ENSEMBLE DE BANDE À LED FLEXIBLE ET ALIMENTATION - BLANC - 150 LEDS - 5 m

NL KIT MET FLEXIBELE LEDSTRIP EN VOEDING - WIT - 150 LEDS - 5 m

DE SATZ MIT FLEXIBLER LED-LEISTE UND NETZTEIL - WEIß - 150 LEDS - 5 m - 12 VDC

ES JUEGO CON CINTA DE LEDS FLEXIBLE Y ADAPTADOR DE RED - COLOR BLANCO - 150 LEDS - 5 m - 12 VDC

flexible PCB (white) • contains 150 high brightness LEDs (type 5050) • common anode: ◦ black wire: ground ◦ red wire: 12 Vdc • can be cut every 3 LEDs (10 cm) • power supply included • self-adhesive

IP rating: IP61 • coating: epoxy • colour: white • colour temperature: 6000-6500 K • wavelength: - • light output: 390 lm/m • power consumption: 23 W • viewing angle: 120° • LED spacing: 33 mm • current: 1.9 A • power supply: 12 Vdc/24 W (adapter included) • dimensions: 5 m x 10 mm • weight: 460 g



LEDS02W



KIT WITH FLEXIBLE LED STRIP AND POWER SUPPLY - WARM WHITE - 150 LED - 5 m



FR ENSEMBLE DE BANDE À LED FLEXIBLE ET ALIMENTATION - BLANC CHAUD - 150 LEDS - 5 m

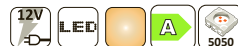
NL KIT MET FLEXIBELE LEDSTRIP EN VOEDING - WARMWIT - 150 LEDS - 5 m

DE SATZ MIT FLEXIBLER LED-LEISTE UND NETZTEIL - WARMWEIß - 150 LEDS - 5 m - 12 VDC

ES JUEGO CON CINTA DE LEDS FLEXIBLE Y ADAPTADOR DE RED - COLOR BLANCO CÁLIDO - 150 LEDS - 5 m - 12 VDC

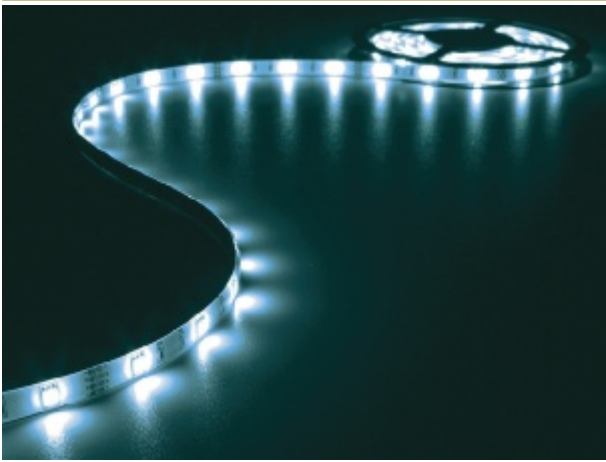
flexible PCB (white) • contains 150 high brightness LEDs (type 5050) • common anode: ◦ black wire: ground ◦ red wire: 12 Vdc • can be cut every 3 LEDs (10 cm) • power supply included • self-adhesive

IP rating: IP61 • coating: epoxy • colour: warm white • colour temperature: 3000-3500 K • wavelength: - • light output: ± 330 lm/m • power consumption: 23 W • viewing angle: 120° • LED spacing: 33 mm • current: 1.9 A • power supply: 12 Vdc/24 W (adapter included) • dimensions: 5 m x 10 mm • weight: 460 g



LEDS02WW





KIT WITH FLEXIBLE LED STRIP AND POWER SUPPLY - BLUE - 150 LEDs - 5 m



FR: ENSEMBLE DE BANDE À LED FLEXIBLE ET ALIMENTATION - BLEU - 150 LEDs - 5 m

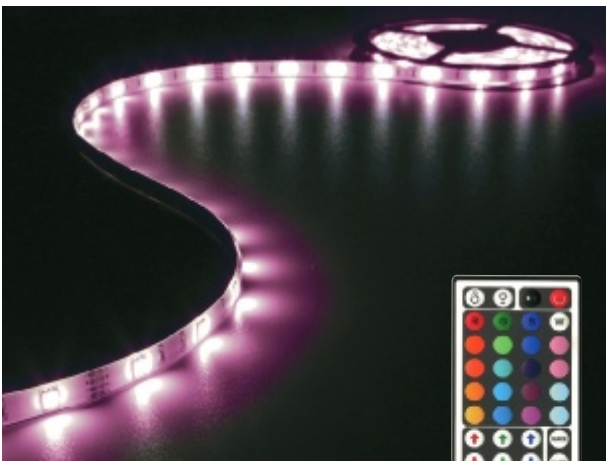
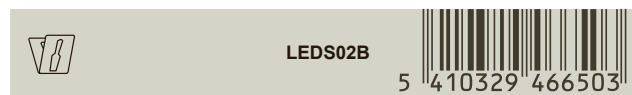
NL: KIT MET FLEXIBELE LEDSTRIP EN VOEDING - BLAUW - 150 LEDs - 5 m

DE: SATZ MIT FLEXIBLER LED-LEISTE UND NETZTEIL - BLAU - 150 LEDs - 5 m - 12 VDC

ES: JUEGO CON CINTA DE LEDs FLEXIBLE Y ADAPTADOR DE RED - COLOR AZUL - 150 LEDs - 5 m - 12 VDC

flexible PCB (white) • contains 150 high brightness LEDs (type 5050) • common anode:
 ◦ black wire: ground ◦ red wire: 12 Vdc • can be cut every 3 LEDs (10 cm) • power supply included • self-adhesive

IP rating: IP61 • coating: epoxy • colour: blue • wavelength: 470-475 nm • light output: ± 230 lm/m • power consumption: 23 W • viewing angle: 120° • LED spacing: 33 mm • current: 1.9 A • power supply: 12 Vdc/24 W (adapter included) • dimensions: 5 m x 10 mm • weight: 460 g



KIT WITH FLEXIBLE LED STRIP, CONTROLLER AND POWER SUPPLY - RGB - 150 LEDs - 5 m



FR: ENSEMBLE DE BANDE À LED FLEXIBLE, CONTRÔLEUR ET ALIMENTATION - RVB - 150 LEDs - 5 m - 12 Vcc

NL: KIT MET FLEXIBELE LEDSTRIP, CONTROLLER EN VOEDING - RGB - 150 LEDs - 5 m - 12 VDC

DE: SATZ MIT FLEXIBLER LED-LEISTE, CONTROLLER UND NETZTEIL - RGB - 150 LEDs - 5 m - 12 VDC

ES: JUEGO CON CINTA DE LEDs FLEXIBLE, CONTROLADOR Y ADAPTADOR DE RED - RGB - 150 LEDs - 5 m - 12 VDC

flexible PCB (white) • contains 150 high brightness LEDs (type 5050) • RGB controller with different programs: ◦ fixed colour ◦ animated program • controlled through infrared remote (incl.) • common anode: ◦ black wire: ground ◦ red wire: 12 VDC • can be cut every 3 LEDs (10 cm) • power supply included • self-adhesive

IP rating: IP61 • coating: epoxy • colour: red-green-blue • wavelength: red: 615 - 630 nm, green: 520 - 530 nm, blue: 465 - 470 nm • light output: 390 lm/m • power consumption: 23 W (red 9 W, green 8 W, blue 7 W) • viewing angle: 120° • LED spacing: 33 mm • current: 1.9 A • power supply: 12 VDC / 36 W (adapter included) • dimensions: 5 m x 10 mm • weight: 700 g



KIT WITH FLEXIBLE LED STRIP, CONTROLLER AND POWER SUPPLY - RGB - 150 LEDs - 5 m - 12 VDC



FR: RUBAN À LEDs FLEXIBLE, CONTRÔLEUR ET ALIMENTATION EN KIT - RVB - 150 LEDs - 5 m - 12 Vcc

NL: KIT MET FLEXIBELE LEDSTRIP, CONTROLLER EN VOEDING - RGB - 150 LEDs - 5 m - 12 VDC

DE: SATZ MIT FLEXIBLER LED-LEISTE, CONTROLLER UND NETZTEIL - RGB - 150 LEDs - 5 m - 12 VDC

ES: JUEGO CON CINTA DE LEDs FLEXIBLE, CONTROLADOR Y ADAPTADOR DE RED - RGB - 150 LEDs - 5 m - 12 VDC

flexible PCB (white) • contains 150 high brightness LEDs (type 5050) • RGB controller with different programs: ◦ fixed colour ◦ animated program • controlled through infrared remote (incl.) • common anode: ◦ black wire: ground ◦ red wire: 12 VDC • can be cut every 3 LEDs (10 cm) • power supply included • self-adhesive

IP rating: IP61 • coating: epoxy • colour: red-green-blue • light output: 288 lm/m • power consumption: 20 W • viewing angle: 120° • LED spacing: 33 mm • current: 1.9 A • power supply: 12 VDC / 24 W (adapter included) • dimensions: 5 m x 10 mm • weight: 700 g





KIT WITH FLEXIBLE LED STRIP AND POWER SUPPLY - WHITE - 300 LEDs - 5 m



FR ENSEMBLE DE BANDE À LED FLEXIBLE ET ALIMENTATION - BLANC - 300 LEDS - 5 m

NL KIT MET FLEXIBELE LEDSTRIP EN VOEDING - WIT - 300 LEDS - 5 m - 12 VDC

DE SATZ MIT FLEXIBLER LED-LEISTE UND NETZTEIL - WEIß - 300 LEDS - 5 m - 12 VDC

ES JUEGO CON CINTA DE LEDS FLEXIBLE Y ADAPTADOR DE RED - COLOR BLANCO - 300 LEDS - 5 m - 12 VDC

flexible PCB (white) ● contains 300 high brightness LEDs (type 3528) ● common anode:
○ black wire: ground ○ red wire: 12 Vdc ● can be cut every 3 LEDs (5 cm) ● power supply included ● self-adhesive

IP rating: IP61 ● coating: epoxy ● colour: white ● colour temperature: 6000-6500 K
● wavelength: - ● light output: ± 210 lm/m ● power consumption: 17 W ● viewing angle: 120°
● LED spacing: 16.5 mm ● current: 1.4 A ● power supply: 12 Vdc/24 W (adapter included)
● dimensions: 5 m x 8 mm ● weight: ± 410 g



KIT WITH FLEXIBLE LED STRIP AND POWER SUPPLY - WARM WHITE - 300 LED - 5 m



FR ENSEMBLE DE BANDE À LED FLEXIBLE ET ALIMENTATION - BLANC CHAUD - 300 LEDS - 5 m - 12 Vcc

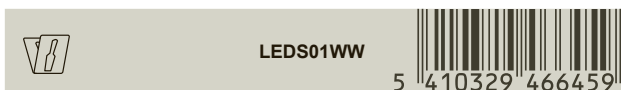
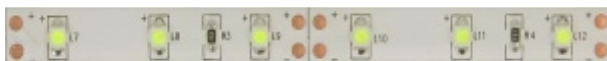
NL KIT MET FLEXIBELE LEDSTRIP EN VOEDING - WARMWIT - 300 LEDS - 5 m - 12 VDC

DE SATZ MIT FLEXIBLER LED-LEISTE UND NETZTEIL - WARMWEIß - 300 LEDS - 5 m - 12 VDC

ES JUEGO CON CINTA DE LEDS FLEXIBLE Y ADAPTADOR DE RED - COLOR BLANCO CÁLIDO - 300 LEDS - 5 m - 12 VDC

flexible PCB (white) ● contains 300 high brightness LEDs (type 3528) ● common anode:
○ black wire: ground ○ red wire: 12 VDC ● can be cut every 3 leds (5 cm) ● power supply included ● self-adhesive

IP rating: IP61 ● coating: epoxy ● colour: warm white ● colour temperature: 3000-3500 K
● wavelength: - ● light output: ± 170 lm/m ● power consumption: 17 W ● viewing angle: 120°
● LED spacing: 16.5 mm ● current: 1.4 A ● power supply: 12 Vdc/24 W (adapter included)
● dimensions: 5 m x 8 mm ● weight: ± 410 g



KIT WITH FLEXIBLE LED STRIP AND POWER SUPPLY - BLUE - 300 LEDs - 5 m



FR ENSEMBLE DE BANDE À LED FLEXIBLE ET ALIMENTATION - BLEU - 300 LEDS - 5 m - 12 Vcc

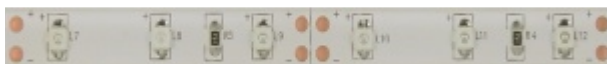
NL KIT MET FLEXIBELE LEDSTRIP EN VOEDING - BLAUW - 300 LEDS - 5 m - 12 VDC

DE SATZ MIT FLEXIBLER LED-LEISTE UND NETZTEIL - BLAU - 300 LEDS - 5 m - 12 VDC

ES JUEGO CON CINTA DE LEDS FLEXIBLE Y ADAPTADOR DE RED - COLOR AZUL - 300 LEDS - 5 m - 12 VDC

flexible PCB (white) ● contains 300 high brightness LEDs (type 3528) ● common anode:
○ black wire: ground ○ red wire: 12 Vdc ● can be cut every 3 LEDs (5 cm) ● power supply included ● self-adhesive

IP rating: IP61 ● coating: epoxy ● colour: blue ● wavelength: 465-475 nm ● light output: ± 75 lm/m ● power consumption: 17 W ● viewing angle: 120° ● LED spacing: 16.5 mm
● current: 1.4 A ● power supply: 12 Vdc/24 W (adapter included) ● dimensions: 5 m x 8 mm
● weight: ± 410 g





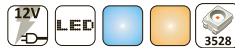
KIT WITH WARM WHITE & COLD WHITE FLEXIBLE LED STRIP, CONTROLLER AND POWER SUPPLY - 300 LEDs - 5 m - 12 VDC



FR: ENSEMBLE DE FLEXIBLE LED, CONTRÔLEUR ET ALIMENTATION - 300 LED - 5 m - 12 VCC - BLANC CHAUD & BLANC NEUTRE
 NL: KIT MET LED-STRIP, CONTROLLER EN VOEDING - 300 LEDs - 5 m - 12 VDC - WARMWIT & KOUDWIT
 DE: SATZ MIT FLEXIBLER LED-LEISTE, CONTROLLER UND NETZTEIL - WARM- UND KALTWEIß - 300 LEDs - 5 m - 12 VDC
 ES: JUEGO CON CINTA DE LEDS FLEXIBLE, CONTROLADOR Y ADAPTADOR DE RED - COLOR BLANCO CÁLIDO Y BLANCO FRÍO - 300 LEDs - 5 m - 12 VDC

flexible PCB (white) ● contains 300 high brightness LEDs (type 3528) ● controller with different programs: ○ cold white and warm white mixing ○ animated programme ● controlled through infrared remote (incl.) ● can be cut every 6 LEDs (10 cm) ● power supply included ● self-adhesive

IP rating: IP61 ● coating: silicone ● colour: warm white (3000K) & cold white (8500K) ● viewing angle: 120° ● LED spacing: 16.5 mm ● power supply: 12 VDC / 24 W (adapter included) ● dimensions: 5 m x 8 mm ● weight: 420 g



LEDS12CWW



5 410329 583460



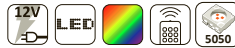
KIT WITH DIGITAL ANIMATED FLEXIBLE LED STRIP, CONTROLLER AND POWER SUPPLY - RGB - 150 LEDs - 5 m - 12 VDC



FR: ENSEMBLE DE FLEXIBLE LED ANIMÉ, CONTRÔLEUR ET ALIMENTATION - RVB - 150 LED - 5 m - 12 VCC
 NL: KIT MET DIGITAAL GEANIMEERDE LED-STRIP, CONTROLLER EN VOEDING - RGB - 150 LEDs - 5 m - 12 VDC
 DE: SATZ MIT FLEXIBLER LED-LEISTE, CONTROLLER UND NETZTEIL - DIGITAL ANIMIERT - RGB - 150 LEDs - 5 m - 12 VDC
 ES: JUEGO CON CINTA DE LEDS FLEXIBLE, CONTROLADOR Y ADAPTADOR DE RED - ANIMADO DIGITALMENTE - RGB - 150 LEDs - 5 m - 12 VDC

flexible PCB (white) ● contains 150 high brightness LEDs (type 5050) ● digital RGB controller with 164 different programs: ○ fixed colour ○ different chase effects ○ shooting stars effect from left to right ○ automatic colour change, fast ○ automatic colour change, slow ○ smooth cycle effect ○ automatic run through all the programmes ● controlled through infrared remote (incl.) ● can be cut every 3 LEDs (10 cm) ● power supply included ● self-adhesive

IP rating: IP61 ● coating: silicone ● colour: red-green-blue ● wavelength: red: 615-630 nm, green: 520-530 nm, blue: 465-470 nm ● IC type: TM1804 ● viewing angle: 120° ● LED spacing: 33 mm ● power supply: 12 VDC / 24 W (adapter included) ● dimensions: 5 m x 10 mm ● weight: 450 g



LEDS10DRGB



5 410329 583446



KIT WITH SOUND-CONTROLLED FLEXIBLE LED STRIP, CONTROLLER AND POWER SUPPLY - RGB - 150 LEDs - 5 m - 12 VDC



FR: ENSEMBLE DE FLEXIBLE LED PILOTÉ PAR MUSIQUE, CONTRÔLEUR ET ALIMENTATION - RVB - 150 LED - 5 m - 12 VCC
 NL: KIT MET MUZIEKGESTUURDE LED-STRIP, CONTROLLER EN VOEDING - RGB - 150 LEDs - 5 m - 12 VDC
 DE: SATZ MIT FLEXIBLER LED-LEISTE, CONTROLLER UND NETZTEIL - MUSIKGESTEUERT - RGB - 150 LEDs - 5 m - 12 VDC
 ES: JUEGO CON CINTA DE LEDS FLEXIBLE, CONTROLADOR Y ADAPTADOR DE RED - CONTROLADO POR LA MÚSICA - RGB - 150 LEDs - 5 m - 12 VDC

flexible PCB (white) ● contains 150 high brightness LEDs (type 5050) ● RGB controller with different programs: ○ fixed colour ○ animated programs ○ sound-controlled programs ● controlled through infrared remote (incl.) ● common anode: ○ black wire: ground ○ red wire: 12 VDC ● can be cut every 3 LEDs (10 cm) ● power supply included ● self-adhesive

IP rating: IP61 ● coating: silicone ● colour: red-green-blue ● wavelength: red: 615-630 nm, green: 520-530 nm, blue: 465-470 nm ● power consumption: 23 W (red 8 W, green 7.5 W, blue 7.5 W) ● viewing angle: 120° ● LED spacing: 33 mm ● power supply: 12 VDC / 24 W (adapter included) ● dimensions: 5 m x 10 mm ● weight: 480 g



LEDS11SRGB



5 410329 583453



KIT WITH FLEXIBLE ANIMATED RGB LED STRIP



FR ENSEMBLE DE FLEXIBLE LED ANIMÉ
NL KIT MET FLEXIBELE GEANIMEERDE RGB LED-STRIP
DE SATZ MIT FLEXIBLER RGB LED-LEISTE - ANIMIERT
ES JUEGO CON CINTA DE LEDS FLEXIBLE - ANIMADO



the strip contains 9 high brightness RGB LEDs (type 5050) ● can be cut every LED (5.5 cm)
● integrated RGB controller with different programs: static colour, fade effect & flashing effect
● power supply: via USB cable (connection with TV, notebook...)

IP rating: IP61 ● coating: epoxy ● colour: RGB ● power consumption: 1.5 W ● viewing angle: 120° ● LED spacing: 5.5 cm ● power supply: USB cable (5 VDC) ● dimensions: 50 cm x 12 mm ● weight: 40 g



LEDS13RGB



5 410329 605520

KIT WITH RIGID LED STRIPS - NEUTRAL WHITE



FR JEU AVEC BANDES À LED RIGIDES - BLANC NEUTRE
NL SET MET NIET-BUIGBARE LEDSTRIPS - NEUTRAALWIT
DE SATZ MIT STARREN LED-LEISTEN - NEUTRALWEISS
ES JUEGO CON CINTAS DE LEDS RÍGIDAS - BLANCO NEUTRO



3 rigid LED strips with power adapter, switch and distribution connector

ultra slim design ● set contains: ○ 3 rigid LED strips ○ power adapter with switch ○ mounting clips ○ interconnection cables and distribution box ● indoor use ● self-adhesive

colour: neutral white ● luminous flux: 60 lm / LED strip ● power consumption: 1 W x 3 ● LEDs: 15 x 3 pcs ● beam angle: 120° ● dimensions: 400 x 9.5 x 6 mm (L x B x H)
● cable length: 150 cm ● power adapter: 12 VDC / 6 W (incl.) ● weight: 20 g (per piece)



30C 30E 30C 30E 30C 30E



LEDS04NW



5 410329 475000

KIT WITH RIGID LED STRIPS - WARM WHITE



FR JEU AVEC BANDES À LED RIGIDES - BLANC CHAUD
NL SET MET NIET-BUIGBARE LEDSTRIPS - WARMWIT
DE SATZ MIT STARREN LED-LEISTEN - WARMWEISS
ES JUEGO CON CINTAS DE LEDS RÍGIDAS - BLANCO CÁLIDO



3 rigid LED strips with power adapter, switch and distribution connector

ultra slim design ● set contains: ○ 3 rigid LED strips ○ power adapter with switch ○ mounting clips ○ interconnection cables and distribution box ● indoor use ● self-adhesive

colour: warm white ● luminous flux: 60 lm / LED strip ● power consumption: 1 W x 3 ● LEDs: 15 x 3 pcs ● beam angle: 120° ● dimensions: 400 x 9.5 x 6 mm (L x B x H) ● cable length: 150 cm ● power adapter: 12 VDC / 6 W (incl.) ● weight: 20 g (per piece)



30C 30E 30C 30E 30C 30E



LEDS04WW



5 410329 474935



**FLEX LED - BLUE - 20 m
- 80 LEDS/M - 24 VDC**



FR FLEX LED - BLEU - 20 m - 80 LED/M - 24 VCC
 NL FLEX LED - BLAUW - 20 m - 80 LEDS/M - 24 VDC
 DE FLEX LED - BLAU - 20 m - 80 LEDS/m - 24 VDC
 ES FLEX LED - COLOR AZUL - 20 m - 80 LEDS/m - 24 VDC

can be cut to desired length (cutting marks provided) ● bending radius of min. 4 cm: very easy to shape various logo's, patterns, motifs and all other applications where traditional neon is applied ● diffuser: frosted ● shatterproof ● UV resistant ● for in- and outdoor use ● emits almost no heat ● comes with: 2 power cables (RLLFPC) and 2 end caps (RLLFEC) ● optional parts and accessories: ○ power cable: RLLFPC ○ end caps: RLLFEC ○ straight connector: RLLFSC ○ T-connector: RLLFTC ○ L-connector type I: RLLFLC1 ○ L-connector type II: RLLFLC2 ○ L-connector type III: RLLFLC3 ○ alu channel for easy installation: RLLFMC ○ power supply: LPS10024R

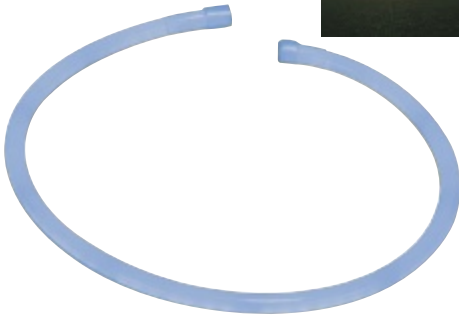
colour: blue ● can be cut every 100 cm ● power supply: 24 Vdc ● power consumption: 4.4 W/m ● LEDs: 80 pcs/m ● IP rating: IP44 ● dimensions: 16 x 28 mm ● length: 20 m ● max. connected strips: 1 pcs (20 m per power supply) ● weight: ± 10.5 kg



RLLF120B



5 410329 454302



**FLEX LED - GREEN - 20 m
- 80 LEDS/M - 24 VDC**



FR FLEX LED - VERT - 20 m - 80 LED/M - 24 VCC
 NL FLEX LED - GROEN - 20 m - 80 LEDS/M - 24 VDC
 DE FLEX LED - GRÜN - 20 m - 80 LEDS/m - 24 VDC
 ES FLEX LED - COLOR VERDE - 20 m - 80 LEDS/m - 24 VDC

can be cut to desired length (cutting marks provided) ● bending radius of min. 4 cm: very easy to shape various logo's, patterns, motifs and all other applications where traditional neon is applied ● diffuser: frosted ● shatterproof ● UV resistant ● for in- and outdoor use ● emits almost no heat ● comes with: 2 power cables (RLLFPC) and 2 end caps (RLLFEC) ● optional parts and accessories: ○ power cable: RLLFPC ○ end caps: RLLFEC ○ straight connector: RLLFSC ○ T-connector: RLLFTC ○ L-connector type I: RLLFLC1 ○ L-connector type II: RLLFLC2 ○ L-connector type III: RLLFLC3 ○ alu channel for easy installation: RLLFMC ○ power supply: LPS10024R

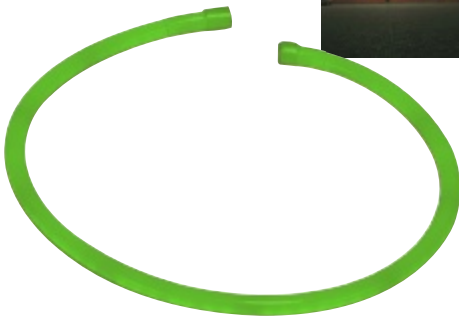
colour: green ● can be cut every 100 cm ● power supply: 24 Vdc ● power consumption: 4.4 W/m ● LEDs: 80 pcs/m ● IP rating: IP44 ● dimensions: 16 x 28 mm ● length: 20 m ● max. connected strips: 1 pcs (20 m per power supply) ● weight: ± 10.5 kg



RLLF120G



5 410329 454289



**FLEX LED - RED - 20 m -
80 LEDS/M - 24 VDC**



FR FLEX LED - ROUGE - 20 m - 80 LED/M - 24 VCC
 NL FLEX LED - ROOD - 20 m - 80 LEDS/M - 24 VDC
 DE FLEX LED - ROT - 20 m - 80 LEDS/m - 24 VDC
 ES FLEX LED - COLOR ROJO - 20 m - 80 LEDS/m - 24 VDC

can be cut to desired length (cutting marks provided) ● bending radius of min. 4 cm: very easy to shape various logo's, patterns, motifs and all other applications where traditional neon is applied ● diffuser: frosted ● shatterproof ● UV resistant ● for in- and outdoor use ● emits almost no heat ● comes with: 2 power cables (RLLFPC) and 2 end caps (RLLFEC) ● optional parts and accessories: ○ power cable: RLLFPC ○ end caps: RLLFEC ○ straight connector: RLLFSC ○ T-connector: RLLFTC ○ L-connector type I: RLLFLC1 ○ L-connector type II: RLLFLC2 ○ L-connector type III: RLLFLC3 ○ alu channel for easy installation: RLLFMC ○ power supply: LPS10024R

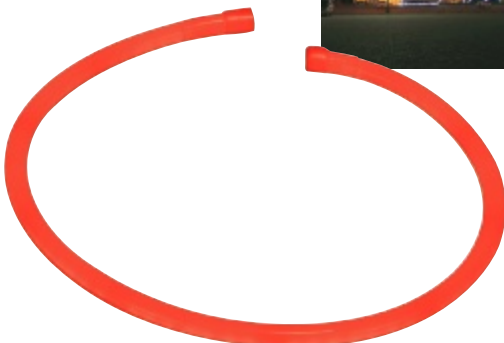
colour: red ● can be cut every 100 cm ● power supply: 24 Vdc ● power consumption: 4.4 W/m ● LEDs: 80 pcs/m ● IP rating: IP44 ● dimensions: 16 x 28 mm ● length: 20 m ● max. connected strips: 1 pcs (20 m per power supply) ● weight: ± 10.5 kg



RLLF120R



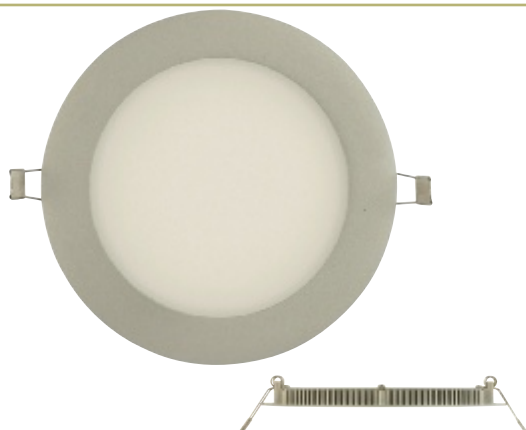
5 410329 454296





FIXTURES & SPOTS

LUMINAIRES & SPOTS
LAMPEN & SPOTS
LEUCHTEN & SCHEINWERFER
LUMINARIAS & FOCOS



LED FIXTURE 10 W - ROUND MODEL

FR LUMINAIRE LED DE 10 W - PANNEAU ROND
NL LEDARMATUUR 10 W - ROND MODEL
DE LED-LEUCHTE 10 W - RUND
ES LUMINARIA LED DE 10 W - REDONDA



high brightness • long lifespan • easy installation

LED type: 3528 • illuminance: 35,000 lux • input voltage: 85-265Vac • operating voltage: 18Vdc • current: 320mA • power consumption: 10W • colour: neutral white (3500-5500K)
• housing: coated steel • diffuser: frosted PMMA 2mm • beam angle: 120° • dimensions: Ø180 x 12mm (Ø7.09" x 0.47") • weight: 325g (11.5oz)



► May not be sold in France



LEDA21NW



5 410329 462369



LED FIXTURE 6.5 W - SQUARE PANEL

FR LUMINAIRE LED DE 6.5 W - PANNEAU CARRÉ
NL LEDARMATUUR 6.5 W - VIERKANT PANEEL
DE LED-LEUCHTE 6.5 W - QUADRATISCH
ES LUMINARIA LED DE 6.5 W - CUADRADA



high brightness • long lifespan • easy installation

LED type: 3528 • illuminance: 35,000 lux • input voltage: 85-265Vac • operating voltage: 15Vdc • current: 320mA • power consumption: 6.5W • colour: neutral white (3500-5500K)
• housing: coated steel • diffuser: frosted PMMA 2mm • beam angle: 120° • dimensions: 200 x 200 x 12mm (7.87" x 7.87" x 0.47") • weight: 510g (18oz)



► May not be sold in France



LEDA22NW



5 410329 462376



LED RECESSED SPOTLIGHT - WARM WHITE - 3200K - 12V

FR SPOT LED ENCASTRABLE - BLANC CHAUD (3200K) 12V
NL LED-INBOUWSPOT - WARMWIT (3200K) 12V
DE LED-EINBAULAMPE - WARMWEIß (3200K) 12V
ES LÁMPARA LED PARA EMPOTRAR - COLOR BLANCO CÁLIDO (3200K) 12V



ceiling LED light, easy installation • very bright LEDs • energy saving • extra long life-time
• IP44

voltage (V): 12 • power consumption (W): 4.5 • socket: cable connector • average lifetime (h): 50 000 • colour temperature (K): 3200 • intensity (lm): 300 • beam angle: 120° • colour: warm white • dimmable: no • number of LEDs: 45 (SMD LED) • dimensions: Ø 87 x 30 mm • mounting hole diameter: 79 mm



LEDA23WW/12



5 410329 465520



AUTOMATIC DRAWER LIGHT

FR ÉCLAIRAGE AUTOMATIQUE POUR TIROIR
NL AUTOMATISCHE LADEVERLICHTING
DE AUTOMATISCHE LED-BELEUCHTUNG FÜR SCHUBLADE
ES ILUMINACIÓN LED AUTOMÁTICA PARA CAJÓN



light activation: vibration switch • delay time: 12 seconds

light source: 3 x 5 mm LED • colour: cold white • material: ABS plastic • power supply: 3 x AAA battery (not incl.) • dimensions: 170 x 20 x 15 mm • weight: 32 g



LEDA53CW



5 410329 585860



LED TUBE CABINET LIGHT - 5 W - NEUTRAL WHITE



FR ÉCLAIRAGE D'ARMOIRE À LED - 5 W - BLANC NEUTRE
 NL LED-KASTVERLICHTING - 5 W - NEUTRAALWIT
 DE LED-SCHRANKBELEUCHTUNG - RÖHRE - 5 W - NEUTRALWEIß
 ES ILUMINACIÓN LED PARA ARMARIO - TUBO - 5 W - COLOR BLANCO NEUTRO

LED cabinet light • equivalent to T5 fluorescent lamp • easy installation • surface mounting
 • housing colour: white • with on-off switch • accessories: ◦ power supply cable ◦ 15 cm interconnection cable ◦ interconnection connector

electrical data: ◦ power LED module: 26 pieces 2835 LEDs ◦ total nominal power: < 5.5 W
 ◦ nominal voltage driver: 230 VAC ◦ power factor: > 0.7 ◦ energy consumption kWh/1000 h: 5.5
 • light technical data: ◦ colour: neutral white ◦ colour temperature: 4000 K ◦ beam angle: 140°
 ◦ luminous intensity: 120 cd ◦ luminous flux: 500 lm ◦ colour rendering index: > 80
 ◦ starting time: < 0.5 s ◦ warm-up time (60 %): < 1 s • lifespan: ◦ nominal life time: 20.000 h
 ◦ number of switching cycles: 10.000 • dimensions & weight: ◦ dimensions LED module: 300 x 23 x 36 mm ◦ weight: 95 g



LEDA70NW



5 410329 612382



LED TUBE CABINET LIGHT - 10 W - NEUTRAL WHITE



FR ÉCLAIRAGE D'ARMOIRE À LED - 10 W - BLANC NEUTRE
 NL LED-KASTVERLICHTING - 10 W - NEUTRAALWIT
 DE LED-SCHRANKBELEUCHTUNG - RÖHRE - 10 W - NEUTRALWEIß
 ES ILUMINACIÓN LED PARA ARMARIO - TUBO - 10 W - COLOR BLANCO NEUTRO

LED cabinet light • equivalent to T5 fluorescent lamp • easy installation • surface mounting
 • housing colour: white • with on-off switch • accessories: ◦ power supply cable ◦ 15 cm interconnection cable ◦ interconnection connector

electrical data: ◦ power LED module: 52 pieces 2835 LEDs ◦ total nominal power: < 10.5 W
 ◦ nominal voltage driver: 230 VAC ◦ power factor: > 0.7 ◦ energy consumption kWh/1000 h: 10.5
 • light technical data: ◦ colour: neutral white ◦ colour temperature: 4000 K ◦ beam angle: 140°
 ◦ luminous intensity: 230 cd ◦ luminous flux: 1000 lm ◦ colour rendering index: > 80
 ◦ starting time: < 0.5 s ◦ warm-up time (60 %): < 1 s • lifespan: ◦ nominal life time: 20.000 h
 ◦ number of switching cycles: 10.000 • dimensions & weight: ◦ dimensions LED module: 600 x 23 x 36 mm ◦ weight: 145 g



LEDA71NW



5 410329 602895



LED TUBE CABINET LIGHT - 15 W - NEUTRAL WHITE



FR ÉCLAIRAGE D'ARMOIRE À LED - 15 W - BLANC NEUTRE
 NL LED-KASTVERLICHTING - 15 W - NEUTRAALWIT
 DE LED-SCHRANKBELEUCHTUNG - RÖHRE - 15 W - NEUTRALWEIß
 ES ILUMINACIÓN LED PARA ARMARIO - TUBO - 15 W - COLOR BLANCO NEUTRO

LED cabinet light • equivalent to T5 fluorescent lamp • easy installation • surface mounting
 • housing colour: white • with on-off switch • accessories: ◦ power supply cable ◦ 15 cm interconnection cable ◦ interconnection connector

electrical data: ◦ power LED module: 76 pieces 2835 LEDs ◦ total nominal power: < 15.5 W
 ◦ nominal voltage driver: 230 VAC ◦ power factor: > 0.5 ◦ energy consumption kWh/1000 h: 15.5
 • light technical data: ◦ colour: neutral white ◦ colour temperature: 4000 K ◦ beam angle: 140°
 ◦ luminous intensity: 335 cd ◦ luminous flux: 1400 lm ◦ colour rendering index: > 80
 ◦ starting time: < 0.5 s ◦ warm-up time (60 %): < 1 s • lifespan: ◦ nominal life time: 20.000 h
 ◦ number of switching cycles: 10.000 • dimensions & weight: ◦ dimensions LED module: 900 x 23 x 36 mm ◦ weight: 195 g



LEDA72NW

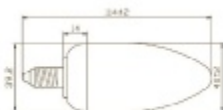


5 410329 602925





velleman



MINI CANDLE SHAPE ENERGY-SAVING LAMP - 7 W - 240 V - E14 - 2700 K - FROST

FR LAMPE FLUOCOMPACTE - CHANDELLE - 7 W - 240 V - E14 - 2700 K - OPAQUE
NL SPAARLAMP - KAARSVORM - 7 W - 240 V - E14 - 2700 K - MAT
DE ENERGIESPARLAMPE - KERZENFORM - 7 W - 240 V - E14 - 2700 K - MATT
ES BOMBILLA DE BAJO CONSUMO - VELA - 7 W - 240 V - E14 - 2700 K - MATE

type: candle - frost • power consumption (W): 7 • colour temperature (K): 2700 • intensity (lm): 300 (equivalent to a conventional 25W lamp) • current (mA): 61 • luminous efficacy (lm/W): 43 • dimensions: Ø40 x 114mm • weight: 63g • voltage (V): 240 • socket: E14 • average lifetime (h): 8000 • lumen maintenance at 2000h: >80% • colour rendering index (Ra): 80



LAE2B3N-F



5 410329 426118



MINI 2U ENERGY-SAVING LAMP - 7 W - 240 V - E27 - 2700 K

FR LAMPE FLUOCOMPACTE MINI 2U - 7 W - 240 V - E27 - 2700 K
NL MINI 2U SPAARLAMP - 7 W - 240 V - E27 - 2700 K
DE MINI 2U ENERGIESPARLAMPE - 7 W - 240 V - E27 - 2700 K
ES MINI BOMBILLA DE BAJO CONSUMO 2U - 7 W - 240 V - E27 - 2700 K

type: 2U • power consumption (W): 7 • colour temperature (K): 2700 • intensity (lm): 400 (equivalent to a conventional 25W lamp) • current (mA): 61 • luminous efficacy (lm/W): 57 • dimensions: Ø40 x 117mm • weight: 52g • voltage (V): 240 • socket: E27 • average lifetime (h): 8000 • lumen maintenance at 2000h: >80%



LAE1B3A



5 410329 425326



MINI 2U ENERGY-SAVING LAMP - 9 W - 240 V - E27 - 2700 K

FR LAMPE FLUOCOMPACTE MINI 2U - 9 W - 240 V - E27 - 2700 K
NL MINI 2U SPAARLAMP - 9 W - 240 V - E27 - 2700 K
DE MINI 2U ENERGIESPARLAMPE - 9 W - 240 V - E27 - 2700 K
ES MINI BOMBILLA DE BAJO CONSUMO 2U - 9 W - 240 V - E27 - 2700 K

type: 2U • power consumption (W): 9 • colour temperature (K): 2700 • intensity (lm): 500 (equivalent to a conventional 40W lamp) • current (mA): 78 • luminous efficacy (lm/W): 56 • dimensions: Ø40 x 127mm • weight: 55g • voltage (V): 240 • socket: E27 • average lifetime (h): 8000 • lumen maintenance at 2000h: >80%



LAE1C3A



5 410329 425371



T3 MINI SPIRAL ENERGY-SAVING LAMP - 13 W - 240 V - E27 - RED

FR LAMPE FLUOCOMPACTE MINI SPIRALE T3 - 13 W - 240 V - E27 - ROUGE
NL MINI T3 SPIRAALVORMIGE SPAARLAMP - 13 W - 240 V - E27 - ROOD
DE MINI ENERGIESPARLAMPE T3 SPIRALFORM - 13 W - 240 V - E27 - ROT
ES MINI BOMBILLA DE BAJO CONSUMO ESPIRAL T3 - 13 W - 240 V - E27 - ROJO

type: spiral • power consumption (W): 13 • colour temperature (K): red • intensity (lm): 850 (equivalent to a conventional 60W lamp) • current (mA): 113 • luminous efficacy (lm/W): 65 • dimensions: Ø45 x 124mm • weight: 57g • voltage (V): 240 • socket: E27 • average lifetime (h): 8000 • lumen maintenance at 2000h: >80%



LAE1E4F



5 410329 426965



T3 MINI SPIRAL ENERGY-SAVING LAMP - 13 W - 240 V - E27 - GREEN

FR LAMPE FLUOCOMPACTE MINI SPIRALE T3 - 13 W - 240 V - E27 - VERT
NL MINI T3 SPIRAALVORMIGE SPAARLAMP - 13 W - 240 V - E27 - GROEN
DE MINI ENERGIESPARLAMPE T3 SPIRALE - 13 W - 240 V - E27 - GRUN
ES MINI BOMBILLA DE BAJO CONSUMO ESPIRAL T3 - 13 W - 240 V - E27 - VERDE

type: spiral • power consumption (W): 13 • colour temperature (K): green • intensity (lm): 850 (equivalent to a conventional 60W lamp) • current (mA): 113 • luminous efficacy (lm/W): 65 • dimensions: Ø45 x 124mm • weight: 57g • voltage (V): 240 • socket: E27 • average lifetime (h): 8000 • lumen maintenance at 2000h: >80%



LAE1E5F



5 410329 426941



T3 MINI SPIRAL ENERGY-SAVING LAMP - 13 W - 240 V - E27 - BLUE

FR LAMPE FLUOCOMPACTE MINI SPIRALE T3 - 13 W - 240 V - E27 - BLEU
NL MINI T3 SPIRAALVORMIGE SPAARLAMP - 13 W - 240 V - E27 - BLAUW
DE MINI ENERGIESPARLAMPE T3 SPIRALE - 13 W - 240 V - E27 - BLAU
ES MINI BOMBILLA DE BAJO CONSUMO ESPIRAL T3 - 13 W - 240 V - E27 - AZUL

type: spiral • power consumption (W): 13 • colour temperature (K): blue • intensity (lm): 850 (equivalent to a conventional 60W lamp) • current (mA): 113 • luminous efficacy (lm/W): 57 • dimensions: Ø45 x 124mm • weight: 57g • voltage (V): 240 • socket: E27 • average lifetime (h): 8000 • lumen maintenance at 2000h: >80%



LAE1E6F



5 410329 426934



T3 MINI SPIRAL ENERGY-SAVING LAMP - 15 W - 240 V - E27 - UV

FR LAMPE FLUOCOMPACTE MINI SPIRALE T3 - 15 W - 240 V - E27 - UV
NL MINI T3 SPIRAALVORMIGE SPAARLAMP - 15 W - 240 V - E27 - UV
DE MINI ENERGIESPARLAMPE T3 SPIRALE - 15 W - 240 V - E27 - UV
ES MINI BOMBILLA DE BAJO CONSUMO ESPIRAL T3 - 15 W - 240 V - E27 - UV

type: spiral • power consumption (W): 15 • colour temperature (K): UV • intensity (lm): 850 • current (mA): 130 • wavelength: 365 nm • luminous efficacy (lm/W): - • dimensions: Ø 39.8 x 117 mm • weight: 85 g • voltage (V): 240 • socket: E27 • average lifetime (h): 8000 • lumen maintenance at 2000h: >80%



LAE1F8F



5 410329 426972

velleman

velleman

velleman



MINI A-SHAPE ENERGY-SAVING LAMP - 15 W - 240 V - E27 - 2700 K

FR LAMPE FLUOCOMPACTE MINI FORME A - 15 W - 240 V - E27 - 2700 K
 NL MINI SPAARLAMP A-VORM - 15 W - 240 V - E27 - 2700 K
 DE MINI A FORM ENERGIESPARLAMPE - 15 W - 240 V - E27 - 2700 K
 ES MINI BOMBILLA DE BAJO CONSUMO FORMA A - 15 W - 240 V - E27 - 2700 K

type: bulb • power consumption (W): 15 • colour temperature (K): 2700 • intensity (lm): 850 (equivalent to a conventional 75W lamp) • current (mA): 130 • luminous efficacy (lm/W): 57 • dimensions: Ø60 x 122mm • weight: 80g • voltage (V): 240 • socket: E27 • average lifetime (h): 8000 • lumen maintenance at 2000h: >80%



LAE1F3H



5 410329 426040

velleman®



GU10 ENERGY-SAVING LAMP - 5 W - 240 V - 2700 K

FR LAMPE FLUOCOMPACTE GU10 - 5 W - 240 V - 2700 K
 NL GU10 SPAARLAMP - 5 W - 240 V - 2700 K
 DE GU10 ENERGIESPARLAMPE - 5 W - 240 V - 2700 K
 ES BOMBILLA DE BAJO CONSUMO GU10 - 5 W - 240 V - 2700 K

type: spot • voltage (V): 240 • power consumption (W): 5 • socket: GU10 • average lifetime (h): 8000 • colour temperature (K): 2700 • intensity (lm): 100 (equivalent to a conventional 25W lamp) • current (mA): 61 • luminous efficacy (lm/W): 43 • lumen maintenance at 2000h: >80% • colour rendering index (Ra): 80 • dimensions: Ø50 x 56.8mm • weight: 35g



LAE3A3L



5 410329 425746

velleman®



PAR30 ENERGY-SAVING LAMP - 15 W - 240 V - E27 - 2700 K

FR LAMPE FLUOCOMPACTE PAR30 - 15 W - 240 V - E27 - 2700 K
 NL PAR30 SPAARLAMP - 15 W - 240 V - E27 - 2700 K
 DE PAR30 ENERGIESPARLAMPE - 15 W - 240 V - E27 - 2700 K
 ES BOMBILLA DE BAJO CONSUMO PAR30 - 15 W - 240 V - E27 - 2700 K

type: spot • power consumption (W): 15 • colour temperature (K): 2700 • intensity (lm): 750 (equivalent to a conventional 75W lamp) • current (mA): 130 • luminous efficacy (lm/W): 50 • dimensions: Ø95 x 135mm • weight: 105g • voltage (V): 240 • socket: E27 • average lifetime (h): 8000 • lumen maintenance at 2000h: >80%



LAE1F3I



5 410329 426088

velleman®



PAR38 ENERGY-SAVING LAMP - 15 W - 240 V - E27 - 2700 K

FR LAMPE FLUOCOMPACTE PAR38 - 15 W - 240 V - E27 - 2700 K
 NL PAR38 SPAARLAMP - 15 W - 240 V - E27 - 2700 K
 DE PAR38 ENERGIESPARLAMPE - 15 W - 240 V - E27 - 2700 K
 ES BOMBILLA DE BAJO CONSUMO PAR38 - 15 W - 240 V - E27 - 2700 K

type: spot • power consumption (W): 15 • colour temperature (K): 2700 • intensity (lm): 800 (equivalent to a conventional 75W lamp) • current (mA): 130 • luminous efficacy (lm/W): 53 • dimensions: Ø120 x 150mm • weight: 150g • voltage (V): 240 • socket: E27 • average lifetime (h): 8000 • lumen maintenance at 2000h: >80%



LAE1F3J



5 410329 426064

velleman®



PAR38 ENERGY-SAVING LAMP - 18 W - 240 V - E27 - 2700 K

FR LAMPE FLUOCOMPACTE PAR38 - 18 W - 240 V - E27 - 2700 K
 NL PAR38 SPAARLAMP - 18 W - 240 V - E27 - 2700 K
 DE PAR38 ENERGIESPARLAMPE - 18 W - 240 V - E27 - 2700 K
 ES BOMBILLA DE BAJO CONSUMO PAR38 - 18 W - 240 V - E27 - 2700 K

type: spot • power consumption (W): 18 • colour temperature (K): 2700 • intensity (lm): 400 (equivalent to a conventional 25W lamp) • current (mA): 157 • luminous efficacy (lm/W): 56 • dimensions: Ø120 x 150mm • weight: 150g • voltage (V): 240 • socket: E27 • average lifetime (h): 8000 • lumen maintenance at 2000h: >80%



LAE1G3J



5 410329 426071

velleman®



ECO HALOGEN LAMP G45 - E27 - 18 W - 220-240 V - 2700 K - CLEAR

FR LAMPE HALOGÈNE ECO G45 - E27 - 18 W - 220-240 V - 2700 K - TRANSPARENT
 NL HALOGEENLAMP ECO G45 - E27 - 18 W - 220-240 V - 2700 K - HELDER
 DE ECO HALOGENLAMPE G45 - E27 - 18 W - 220-240 V - 2700 K - KLAR
 ES BOMBILLA HALÓGENA ECO G45 - E27 - 18 W - 220-240 V - 2700 K - TRANSPARENTE

2 pcs in double clamshell

type: G45 • power consumption: 18 W (equivalent to a conventional 25 W lamp) • energy consumption: 18 kWh/1000h • socket: E27 • glass: clear • colour temperature: 2700 K • colour rendering index: Ra = 99 • energy level class: C • intensity: 205 lm • lifetime: 2000 h • dimensions: Ø 45 x 76 mm



LEH1B3A



5 410329 568207



ECO HALOGEN LAMP G45 - E27 - 28 W - 220-240 V - 2700 K - CLEAR

FR LAMPE HALOGÈNE ECO G45 - E27 - 28 W - 220-240 V - 2700 K - TRANSPARENT
 NL HALOGEENLAMP ECO G45 - E27 - 28 W - 220-240 V - 2700 K - HELDER
 DE ECO HALOGENLAMPE G45 - E27 - 28 W - 220-240 V - 2700 K - KLAR
 ES BOMBILLA HALÓGENA ECO G45 - E27 - 28 W - 220-240 V - 2700 K - TRANSPARENTE

2 pcs in double clamshell

type: G45 • power consumption: 28 W (equivalent to a conventional 40 W lamp) • energy consumption: 28 kWh/1000h • socket: E27 • glass: clear • colour temperature: 2700 K • colour rendering index: Ra = 99 • energy level class: C • intensity: 370 lm • lifetime: 2000 h • dimensions: Ø 45 x 76 mm



LEH1D3A



5 410329 568214





**ECO HALOGEN LAMP A55 - E27 -
28 W - 220-240 V - 2700 K - CLEAR**

FR LAMPE HALOGÈNE ECO A55 - E27 - 28 W - 220-240 V - 2700 K - TRANSPARENT
NL HALOGEENLAMP ECO A55 - E27 - 28 W - 220-240 V - 2700 K - HELDER
DE ECO HALOGENLAMPE A55 - E27 - 28 W - 220-240 V - 2700 K - KLAR
ES BOMBILLA HALÓGENA ECO A55 - E27 - 28 W - 220-240 V - 2700 K - TRANSPARENTE

2 pcs in double clamshell

type: A55 • power consumption: 28 W (equivalent to a conventional 40 W lamp)
• energy consumption: 28 kWh/1000h • socket: E27 • glass: clear • colour temperature: 2700 K • colour rendering index: Ra = 99 • energy level class: C
• intensity: 370 lm • lifetime: 2000 h • dimensions: Ø 55 x 96 mm



LEH1D3D



5 410329 568085



**ECO HALOGEN LAMP A55 - E27 -
42 W - 220-240 V - 2700 K - CLEAR**

FR LAMPE HALOGÈNE ECO A55 - E27 - 42 W - 220-240 V - 2700 K - TRANSPARENT
NL HALOGEENLAMP ECO A55 - E27 - 42 W - 220-240 V - 2700 K - HELDER
DE ECO HALOGENLAMPE A55 - E27 - 42 W - 220-240 V - 2700 K - KLAR
ES BOMBILLA HALÓGENA ECO A55 - E27 - 42 W - 220-240 V - 2700 K - TRANSPARENTE

2 pcs in double clamshell

type: A55 • power consumption: 42 W (equivalent to a conventional 60 W lamp)
• energy consumption: 42 kWh/1000h • socket: E27 • glass: clear • colour temperature: 2700 K • colour rendering index: Ra = 99 • energy level class: C
• intensity: 625 lm • lifetime: 2000 h • dimensions: Ø 55 x 96 mm



LEH1G3D



5 410329 568092



**ECO HALOGEN LAMP A55 - E27 -
53 W - 220-240 V - 2700 K - CLEAR**

FR LAMPE HALOGÈNE ECO A55 - E27 - 53 W - 220-240 V - 2700 K - TRANSPARENT
NL HALOGEENLAMP ECO A55 - E27 - 53 W - 220-240 V - 2700 K - HELDER
DE ECO HALOGENLAMPE A55 - E27 - 53 W - 220-240 V - 2700 K - KLAR
ES BOMBILLA HALÓGENA ECO A55 - E27 - 53 W - 220-240 V - 2700 K - TRANSPARENTE

2 pcs in double clamshell

type: A55 • power consumption: 53 W (equivalent to a conventional 75 W lamp)
• energy consumption: 53 kWh/1000h • socket: E27 • glass: clear • colour temperature: 2700 K • colour rendering index: Ra = 99 • energy level class: C
• intensity: 835 lm • lifetime: 2000 h • dimensions: Ø 55 x 96 mm



LEH1H3D



5 410329 568474



**ECO HALOGEN LAMP R50 - E14 -
18 W - 220-240 V - 2700 K - CLEAR**

FR LAMPE HALOGÈNE ECO R50 - E14 - 18 W - 220-240 V - 2700 K - TRANSPARENT
NL HALOGEENLAMP ECO R50 - E14 - 18 W - 220-240 V - 2700 K - HELDER
DE ECO HALOGENLAMPE R50 - E14 - 18 W - 220-240 V - 2700 K - KLAR
ES BOMBILLA HALÓGENA ECO R50 - E14 - 18 W - 220-240 V - 2700 K - TRANSPARENTE

2 pcs in double clamshell

type: R50 • power consumption: 18 W (equivalent to a conventional 25 W lamp)
• energy consumption: 18 kWh/1000h • socket: E14 • glass: clear • colour temperature: 2700 K • colour rendering index: Ra = 99 • energy level class: C
• intensity: 205 Lm • lifetime: 2000 h • dimensions: Ø 50 x 86 mm



LEH2B3E



5 410329 568221



**ECO HALOGEN LAMP R50 - E14 -
28 W - 220-240 V - 2700 K - FROSTED**

FR LAMPE HALOGÈNE ECO R50 - E14 - 28 W - 220-240 V - 2700 K - DÉPOLI
NL HALOGEENLAMP ECO R50 - E14 - 28 W - 220-240 V - 2700 K - MAT
DE ECO HALOGENLAMPE R50 - E14 - 28 W - 220-240 V - 2700 K - MATTLAS
ES BOMBILLA HALÓGENA ECO R50 - E14 - 28 W - 220-240 V - 2700 K - CRISTAL OPACO

2 pcs in double clamshell

type: R50 • power consumption: 28 W (equivalent to a conventional 40 W lamp)
• energy consumption: 28 kWh/1000h • socket: E14 • glass: frosted • colour temperature: 2700 K • colour rendering index: Ra = 99 • energy level class: C
• intensity: 370 lm • lifetime: 2000 h • dimensions: Ø 50 x 86 mm



LEH2D3E



5 410329 568238



**ECO HALOGEN LAMP R63 - E27 -
28 W - 220-240 V - 2700 K - CLEAR**

FR LAMPE HALOGÈNE ECO R63 - E27 - 28 W - 220-240 V - 2700 K - TRANSPARENT
NL HALOGEENLAMP ECO R63 - E27 - 28 W - 220-240 V - 2700 K - HELDER
DE ECO HALOGENLAMPE R63 - E27 - 28 W - 220-240 V - 2700 K - KLAR
ES BOMBILLA HALÓGENA ECO R63 - E27 - 28 W - 220-240 V - 2700 K - TRANSPARENTE

2 pcs in double clamshell

type: R63 • power consumption: 28 W (equivalent to a conventional 40 W lamp)
• energy consumption: 28 kWh/1000h • socket: E27 • glass: clear • colour temperature: 2700 K • colour rendering index: Ra = 99 • energy level class: C
• intensity: 370 Lm • lifetime: 2000 h • dimensions: Ø 63 x 105 mm



LEH1D3F



5 410329 568252





ECO HALOGEN LAMP R63 - E27 - 42 W - 220-240 V - 2700 K - CLEAR

FR LAMPE HALOGÈNE ECO R63 - E27 - 42 W - 220-240 V - 2700 K - TRANSPARENT
 NL HALOGEENLAMP ECO R63 - E27 - 42 W - 220-240 V - 2700 K - HELDER
 DE ECO HALOGENLAMPE R63 - E27 - 42 W - 220-240 V - 2700 K - KLAR
 ES BOMBILLA HALÓGENA ECO R63 - E27 - 42 W - 220-240 V - 2700 K - TRANSPARENTE

2 pcs in double clamshell

type: R63 • power consumption: 42 W (equivalent to a conventional 60 W lamp)
 • energy consumption: 42 kWh/1000h • socket: E27 • glass: clear • colour temperature: 2700 K • colour rendering index: Ra = 99 • energy level class: C
 • intensity: 625 lm • lifetime: 2000 h • dimensions: Ø 63 x 105 mm



LEH1G3F



ECO HALOGEN LAMP C35 - E14 - 18 W - 220-240 V - 2700 K - CLEAR

FR LAMPE HALOGÈNE ECO C35 - E14 - 18 W - 220-240 V - 2700 K - TRANSPARENT
 NL HALOGEENLAMP ECO C35 - E14 - 18 W - 220-240 V - 2700 K - HELDER
 DE ECO HALOGENLAMPE C35 - E14 - 18 W - 220-240 V - 2700 K - KLAR
 ES BOMBILLA HALÓGENA ECO C35 - E14 - 18 W - 220-240 V - 2700 K - TRANSPARENTE

2 pcs in double clamshell

type: C35 • power consumption: 18 W (equivalent to a conventional 25 W lamp)
 • energy consumption: 18 kWh/1000h • socket: E14 • glass: clear • colour temperature: 2700 K • colour rendering index: Ra = 99 • energy level class: C
 • intensity: 205 lm • lifetime: 2000 h • dimensions: Ø 35 x 105 mm



LEH2B3G



ECO HALOGEN LAMP C35T - E14 - 18 W - 220-240 V - 2700 K - CLEAR

FR LAMPE HALOGÈNE ECO C35T - E14 - 18 W - 220-240 V - 2700 K - TRANSPARENT
 NL HALOGEENLAMP ECO C35T - E14 - 18 W - 220-240 V - 2700 K - HELDER
 DE ECO HALOGENLAMPE C35T - E14 - 18 W - 220-240 V - 2700 K - KLAR
 ES BOMBILLA HALÓGENA ECO C35T - E14 - 18 W - 220-240 V - 2700 K - TRANSPARENTE

2 pcs in double clamshell

type: C35T • power consumption: 18 W (equivalent to a conventional 25 W lamp)
 • energy consumption: 18 kWh/1000h • socket: E14 • glass: clear • colour temperature: 2700 K • colour rendering index: Ra = 99 • energy level class: C
 • intensity: 205 lm • lifetime: 2000 h • dimensions: Ø 35 x 96 mm



LEH2B3I



ECO HALOGEN LAMP C35 - E14 - 28 W - 220-240 V - 2700 K - CLEAR

FR LAMPE HALOGÈNE ECO C35 - E14 - 28 W - 220-240 V - 2700 K - TRANSPARENT
 NL HALOGEENLAMP ECO C35 - E14 - 28 W - 220-240 V - 2700 K - HELDER
 DE ECO HALOGENLAMPE C35 - E14 - 28 W - 220-240 V - 2700 K - KLAR
 ES BOMBILLA HALÓGENA ECO C35 - E14 - 28 W - 220-240 V - 2700 K - TRANSPARENTE

2 pcs in double clamshell

type: C35 • power consumption: 28 W (equivalent to a conventional 40 W lamp)
 • energy consumption: 28 kWh/1000h • socket: E14 • glass: clear • colour temperature: 2700 K • colour rendering index: Ra = 99 • energy level class: C
 • intensity: 370 lm • lifetime: 2000 h • dimensions: Ø 35 x 100 mm



LEH2D3G



ECO HALOGEN LAMP C35T - E14 - 28 W - 220-240 V - 2700 K - CLEAR

FR LAMPE HALOGÈNE ECO C35T - E14 - 28 W - 220-240 V - 2700 K - TRANSPARENT
 NL HALOGEENLAMP ECO C35T - E14 - 28 W - 220-240 V - 2700 K - HELDER
 DE ECO HALOGENLAMPE C35T - E14 - 28 W - 220-240 V - 2700 K - KLAR
 ES BOMBILLA HALÓGENA ECO C35T - E14 - 28 W - 220-240 V - 2700 K - TRANSPARENTE

2 pcs in double clamshell

type: C35T • power consumption: 28 W (equivalent to a conventional 40 W lamp)
 • energy consumption: 28 kWh/1000h • socket: E14 • glass: clear • colour temperature: 2700 K • colour rendering index: Ra = 99 • energy level class: C
 • intensity: 370 lm • lifetime: 2000 h • dimensions: Ø 35 x 96 mm



LEH2D3I



ECO HALOGEN LAMP C35L - E14 - 18 W - 220-240 V - 2700 K - CLEAR

FR LAMPE HALOGÈNE ECO C35L - E14 - 18 W - 220-240 V - 2700 K - TRANSPARENT
 NL HALOGEENLAMP ECO C35L - E14 - 18 W - 220-240 V - 2700 K - HELDER
 DE ECO HALOGENLAMPE C35L - E14 - 18 W - 220-240 V - 2700 K - KLAR
 ES BOMBILLA HALÓGENA ECO C35L - E14 - 18 W - 220-240 V - 2700 K - TRANSPARENTE

2 pcs in double clamshell

type: C35L • power consumption: 18 W (equivalent to a conventional 25 W lamp)
 • energy consumption: 18 kWh/1000h • socket: E14 • glass: clear • colour temperature: 2700 K • colour rendering index: Ra = 99 • energy level class: C
 • intensity: 205 lm • lifetime: 2000 h • dimensions: Ø 35 x 123 mm



LEH2B3H





**ECO HALOGEN LAMP C35L - E14 -
28 W - 220-240 V - 2700 K - CLEAR**

FR LAMPE HALOGÈNE ECO C35L - E14 - 28 W
- 220-240 V - 2700 K - TRANSPARENT
NL HALOGEENLAMP ECO C35L - E14 - 28 W - 220-240 V - 2700 K - HELDER
DE ECO HALOGENLAMPE C35L - E14 - 28 W - 220-240 V - 2700 K - KLAR
ES BOMBILLA HALÓGENA ECO C35L - E14 - 28 W
- 220-240 V - 2700 K - TRANSPARENTE

2 pcs in double clamshell

type: C35L • power consumption: 28 W (equivalent to a conventional 40 W lamp) • energy consumption: 28 kWh/1000h • socket: E14 • glass: clear
• colour temperature: 2700 K • colour rendering index: Ra = 99 • energy level class: C • intensity: 370 lm • lifetime: 2000 h • dimensions: Ø 35 x 123 mm



LEH2D3H



5 410329 568160



**ECO HALOGEN LAMP G4 - 10 W
- 12 V - 2900 K - CLEAR**

FR LAMPE HALOGÈNE ECO G4 - 10 W - 12 V - 2900 K - TRANSPARENT
NL HALOGEENLAMP ECO G4 - 10 W - 12 V - 2900 K - HELDER
DE ECO HALOGENLAMPE G4 - 10 W - 12 V - 2900 K - KLAR
ES BOMBILLA HALÓGENA ECO G4 - 10 W - 12 V - 2900 K - TRANSPARENTE

2 pcs in double clamshell

type: capsule • power consumption: 10 W (equivalent to a conventional 12 W lamp) • energy consumption: 10.60 kWh/1000h • socket: G4 • glass: clear
• colour temperature: 2900 K • energy level class: C • intensity: 120 lm
• lifetime: 2000 h • dimensions: Ø 8 x 30 mm



LEH6A3L



5 410329 568306



**ECO HALOGEN LAMP G6.35 -
20 W - 12 V - 2900 K - CLEAR**

FR LAMPE HALOGÈNE ECO G6.35 - 20 W - 12 V - 2900 K - TRANSPARENT
NL HALOGEENLAMP ECO G6.35 - 20 W - 12 V - 2900 K - HELDER
DE ECO HALOGENLAMPE G6.35 - 20 W - 12 V - 2900 K - KLAR
ES BOMBILLA HALÓGENA ECO G6.35 - 20 W
- 12 V - 2900 K - TRANSPARENTE

2 pcs in double clamshell

type: capsule • power consumption: 20 W (equivalent to a conventional 35 W lamp) • energy consumption: 21.20 kWh/1000h • socket: G6.35 • glass: clear
• colour temperature: 2900 K • energy level class: C • intensity: 280 Lm
• lifetime: 2000 h • dimensions: Ø 8 x 30 mm



LEH9C3L



5 410329 568320



**ECO HALOGEN LAMP ELC - GU10 -
28 W - 220-240 V - 2700 K - CLEAR**

FR LAMPE HALOGÈNE ECO ELC - GU10 - 28 W
- 220-240 V - 2700 K - TRANSPARENT
NL HALOGEENLAMP ECO ELC - GU10 - 28 W - 220-240 V - 2700 K - HELDER
DE ECO HALOGENLAMPE ELC - GU10 - 28 W - 220-240 V - 2700 K - KLAR
ES BOMBILLA HALÓGENA ECO ELC - GU10 - 28 W
- 220-240 V - 2700 K - TRANSPARENTE

2 pcs in double clamshell

type: ELC • power consumption: 28 W (equivalent to a conventional 40 W lamp) • energy consumption: 28 kWh/1000h • socket: GU10 • glass: clear
• colour temperature: 2700 K • colour rendering index: Ra = 99 • energy level class: C • intensity: 360 Lm • beam angle: 35° • lifetime: 2000 h
• dimensions: Ø 50 x 55 mm



LEH3D3J



5 410329 568337



**ECO HALOGEN LAMP ELC - GU10 -
42 W - 220-240 V - 2700 K - CLEAR**

FR LAMPE HALOGÈNE ECO ELC - GU10 - 42 W
- 220-240 V - 2700 K - TRANSPARENT
NL HALOGEENLAMP ECO ELC - GU10 - 42 W - 220-240 V - 2700 K - HELDER
DE ECO HALOGENLAMPE ELC - GU10 - 42 W - 220-240 V - 2700 K - KLAR
ES BOMBILLA HALÓGENA ECO ELC - GU10 - 42 W
- 220-240 V - 2700 K - TRANSPARENTE

2 pcs in double clamshell

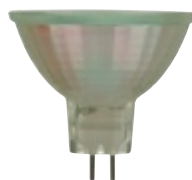
type: ELC • power consumption: 42 W (equivalent to a conventional 60 W lamp) • energy consumption: 42 kWh/1000h • socket: GU10 • glass: clear
• colour temperature: 2700 K • colour rendering index: Ra = 99 • energy level class: C • intensity: 620Lm • beam angle: 35° • lifetime: 2000 h • dimensions: Ø 50 x 55 mm



LEH3G3J



5 410329 568344



**ECO HALOGEN LAMP GU5.3 -
20 W - 12 V - 2700 K - CLEAR**

FR LAMPE HALOGÈNE ECO GU5.3 - 20 W - 12 V - 2700 K - TRANSPARENT
NL HALOGEENLAMP ECO GU5.3 - 20 W - 12 V - 2700 K - HELDER
DE ECO HALOGENLAMPE GU5.3 - 20 W - 12 V - 2700 K - KLAR
ES BOMBILLA HALÓGENA ECO GU5.3 - 20 W
- 12 V - 2700 K - TRANSPARENTE

2 pcs in double clamshell

type: - • power consumption: 20 W (equivalent to a conventional 35 W lamp) • energy consumption: 21.20 kWh/1000h • socket: GU5.3 • glass: clear
• colour temperature: 2700 K • colour rendering index: Ra = 99 • energy level class: C • intensity: 460 cd • beam angle: 38° • lifetime: 2000 h • dimensions: Ø 50 x 35 mm

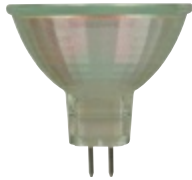


LEH7C3J



5 410329 568375





ECO HALOGEN LAMP GU5.3 - 35 W - 12 V - 2700 K - CLEAR

FR LAMPE HALOGÈNE ECO GU5.3 - 35 W - 12 V - 2700 K - TRANSPARENT
 NL HALOGEENLAMP ECO GU5.3 - 35 W - 12 V - 2700 K - HELDER
 DE ECO HALOGENLAMPE GU5.3 - 35 W - 12 V - 2700 K - KLAR
 ES BOMBILLA HALÓGENA ECO GU5.3 - 35 W - 12 V - 2700 K - TRANSPARENTE

2 pcs in double clamshell

type: ELC • power consumption: 35 W (equivalent to a conventional 50 W lamp) • energy consumption: 37,10 kWh/1000h • socket: GU5.3 • glass: clear • colour temperature: 2700 K • colour rendering index: Ra = 99 • energy level class: C • intensity: 460 Lm • beam angle: 38° • lifetime: 2000 h • dimensions: Ø 35 x 35 mm



LEH7E3J



ECO HALOGEN LAMP GU4 - 20 W - 12 V - 2700 K - CLEAR

FR LAMPE HALOGÈNE ECO GU4 - 20 W - 12 V - 2700 K - TRANSPARENT
 NL HALOGEENLAMP ECO GU4 - 20 W - 12 V - 2700 K - HELDER
 DE ECO HALOGENLAMPE GU4 - 20 W - 12 V - 2700 K - KLAR
 ES BOMBILLA HALÓGENA ECO GU4 - 20 W - 12 V - 2700 K - TRANSPARENTE

2 pcs in double clamshell

type: reflector • power consumption: 20 W (equivalent to a conventional 35 W lamp) • energy consumption: 21,20 kWh/1000h • socket: GU4 • glass: clear • colour temperature: 2700 K • colour rendering index: Ra = 99 • energy level class: C • intensity: 200Lm • beam angle: 30° • lifetime: 2000 h • dimensions: Ø 35 x 35 mm



LEH8C3J



LED LAMP MINI BALL - 3.5 W - E27 - 230 V - COLD WHITE

FR LAMPE LED - SPHÈRE - 3.5 W - E27 - 230 V - BLANC FROID
 NL LEDLAMP - KOGEL - 3.5 W - E27 - 230 V - KOUDWIT
 DE LED-LAMPE - TROPFENLAMPE - 3.5 W - E27 - 230 V - KALTWEISS
 ES BOMBILLA LED - ESFÉRICA - 3.5 W - E27 - 230 V - COLOR BLANCO FRÍO

type: E27 • voltage: 230 VAC • power consumption: 3.5 W • equivalent incandescent lamp power: 20 W • average lifetime: 30000 h • colour temperature: 6400 K • intensity: 200 lm • colour: cold white • colour rendering index: Ra > 75-80 • dimmable: no • number of LEDs: 2 • beam angle: > 80° • dimensions: Ø 44 x 80 mm • weight: 63 g



LAL1B1B



LED LAMP MINI BALL - 3.5 W - E27 - 230 V - WHITE

FR LAMPE LED - SPHÈRE - 3.5 W - E27 - 230 V - BLANC
 NL LEDLAMP - KOGEL - 3.5 W - E27 - 230 V - WIT
 DE LED-LAMPE - TROPFENLAMPE - 3.5 W - E27 - 230 V - WEISS
 ES BOMBILLA LED - ESFÉRICA - 3.5 W - E27 - 230 V - COLOR BLANCO

type: E27 • voltage: 230 VAC • power consumption: 3.5 W • equivalent incandescent lamp power: 17 W • average lifetime: 30000 h • colour temperature: 4200 K • intensity: 190 lm • colour: white • colour rendering index: Ra > 75-80 • dimmable: no • number of LEDs: 2 • beam angle: > 120° • dimensions: Ø 44 x 80 mm • weight: 63 g



LAL1B2B



LED LAMP MINI BALL - 4.5 W - E27 - 230 V - COLD WHITE

FR LAMPE LED - SPHÈRE - 4.5 W - E27 - 230 V - BLANC FROID
 NL LEDLAMP - KOGEL - 4.5 W - E27 - 230 V - KOUDWIT
 DE LED-LAMPE - TROPFENLAMPE - 4.5 W - E27 - 230 V - KALTWEISS
 ES BOMBILLA LED - ESFÉRICA - 4.5 W - E27 - 230 V - COLOR BLANCO FRÍO

type: E27 • voltage: 230 VAC • power consumption: 4.5 W • equivalent incandescent lamp power: 25 W • average lifetime: 30000 h • colour temperature: 6400 K • intensity: 250 lm • colour: cold white • colour rendering index: Ra > 75-80 • dimmable: no • number of LEDs: 3 • beam angle: > 120° • dimensions: Ø 44 x 79 mm • weight: 63 g



LAL1D1B



LED LAMP MINI BALL - 4.5 W - E27 - 230 V - WHITE

FR LAMPE LED - SPHÈRE - 4.5 W - E27 - 230 V - BLANC
 NL LEDLAMP - KOGEL - 4.5 W - E27 - 230 V - WIT
 DE LED-LAMPE - TROPFENLAMPE - 4.5 W - E27 - 230 V - WEISS
 ES BOMBILLA LED - ESFÉRICA - 4.5 W - E27 - 230 V - COLOR BLANCO

type: E27 • voltage: 230 VAC • power consumption: 4.5 W • equivalent incandescent lamp power: 25 W • average lifetime: 30000 h • colour temperature: 4200 K • intensity: 250 lm • colour: white • colour rendering index: Ra > 75-80 • dimmable: no • number of LEDs: 3 • beam angle: > 120° • dimensions: Ø 44 x 79 mm • weight: 63 g



LAL1D2B



LED LAMP - STANDARD - 6 W - E27 - 230 V - WHITE

FR LAMPE LED - STANDARD - 6 W - E27 - 230 V - BLANC
 NL LEDLAMP - STANDAARD - 6 W - E27 - 230 V - WIT
 DE LED-LAMPE - STANDARD - 6 W - E27 - 230 V - WEISS
 ES BOMBILLA LED - ESTÁNDAR - 6 W - E27 - 230 V - COLOR BLANCO

type: E27 • voltage: 230 VAC • power consumption: 6 W • equivalent incandescent lamp power: 25 W • average lifetime: 30000 h • colour temperature: 4200 K • intensity: 280 lm • colour: white • colour rendering index: Ra > 75-80 • dimmable: no • number of LEDs: 3 • beam angle: > 120° • dimensions: Ø 60 x 105 mm • weight: 100 g



LAL1G2A

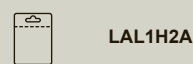




LED LAMP - STANDARD - 6.5 W - E27 - 230 V - WHITE

FR LAMPE LED - STANDARD - 6.5 W - E27 - 230 V - BLANC
NL LEDLAMP - STANDAARD - 6.5 W - E27 - 230 V - WIT
DE LED-LAMPE - STANDARD - 6,5 W - E27 - 230 V - WEIß
ES BOMBILLA LED - ESTÁNDAR - 6.5 W - E27 - 230 V - COLOR BLANCO

type: E27 • voltage: 230 VAC • power consumption: 6.5 W • equivalent incandescent lamp power: 30 W • average lifetime: 30000 h • colour temperature: 4200 K • intensity: 360 lm • colour: white • colour rendering index: Ra > 75-80 • dimmable: no • number of LEDs: 4 • beam angle: > 120° • dimensions: Ø 60 x 106 mm • weight: 100 g



LED LAMP BALL - STANDARD - 6.5 W - E27 - 230 V - WARM WHITE

FR LAMPE LED - STANDARD - 6.5 W - E27 - 230 V - BLANC CHAUD
NL LEDLAMP - STANDAARD - 6.5 W - E27 - 230 V - WARMWIT
DE LED-LAMPE - STANDARD - 6,5 W - E27 - 230 V - WARMWEIß,
ES BOMBILLA LED - ESTÁNDAR - 6.5 W - E27 -
230 V - COLOR BLANCO CÁLIDO

type: E27 • voltage: 230 VAC • power consumption: 6.5 W • equivalent incandescent lamp power: 29 W • average lifetime: 30000 h • colour temperature: 2700 K • intensity: 330 lm • colour: warm white • colour rendering index: Ra > 75-80 • dimmable: no • number of LEDs: 4 • beam angle: > 120° • dimensions: Ø 60 x 106 mm • weight: 100 g



LED GLOBE LAMP - 8 W - E27 - 230 V - NEUTRAL WHITE (4200 K)

FR LAMPE LED - BOULE - 8 W - E27 - 230 V - BLANC NEUTRE (4200 K)
NL LEDLAMP - BOL - 8 W - E27 - 230 V - NEUTRAALWIT (4200 K)
DE LED-LAMPE - BALL - 8 W - E27 - 230 V - NEUTRALWEIß (4200 K)
ES BOMBILLA LED - BOLA - 8 W - E27 - 230 V -
COLOR BLANCO NEUTRO (4200 K)

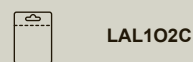
type: E27 • voltage: 230 VAC • power consumption: 8 W • energy consumption: 13 kWh/1000h • equivalent incandescent lamp power: 60 W • average lifetime: 25 000 h • colour temperature: 4200 K • intensity: 672 lm • colour: neutral white • colour rendering index: Ra > 80 • dimmable: no • number of LEDs: 1 • beam angle: > 140° • dimensions: Ø 60 x 100.8 mm • weight: ± 70 g



LED GLOBE LAMP - 10 W - E27 - 230 V - WARM WHITE (2700 K)

FR LAMPE LED - BOULE - 10 W - E27 - 230 V - BLANC CHAUD (2700 K)
NL LEDLAMP - BOL - 10 W - E27 - 230 V - WARMWIT (2700 K)
DE LED-LAMPE - BALL - 10 W - E27 - 230 V - WARMWEIß (2700 K)
ES BOMBILLA LED - BOLA - 10 W - E27 - 230 V - BLANCO CÁLIDO (2700 K)

type: E27 • voltage: 230 VAC • power consumption: 10 W • energy consumption: 15 kWh/1000h • equivalent incandescent lamp power: 100 W • average lifetime: 25 000 h • colour temperature: 2700 K • intensity: 800 lm • colour: warm white • colour rendering index: Ra > 80 • dimmable: no • number of LEDs: 1 • beam angle: > 140° • dimensions: Ø 60 x 100.8 mm • weight: ± 70 g



LED GLOBE LAMP - 10 W - E27 - 230 V - NEUTRAL WHITE (4200 K)

FR LAMPE LED - BOULE - 10 W - E27 - 230 V - BLANC NEUTRE (4200 K)
NL LEDLAMP - BOL - 10 W - E27 - 230 V - NEUTRAALWIT (4200 K)
DE LED-LAMPE - BALL - 10 W - E27 - 230 V - NEUTRALWEIß (4200 K)
ES BOMBILLA LED - BOLA - 10 W - E27 - 230 V - BLANCO NEUTRO (4200 K)

type: E27 • voltage: 230 VAC • power consumption: 10 W • energy consumption: 15 kWh/1000h • equivalent incandescent lamp power: 100 W • average lifetime: 25 000 h • colour temperature: 4200 K • intensity: 840 lm • colour: neutral white • colour rendering index: Ra > 80 • dimmable: no • number of LEDs: 1 • beam angle: > 140° • dimensions: Ø 60 x 100.8 mm • weight: ± 70 g



LED LAMP GLOBE - 11 W - E27 - 230 V - WHITE

FR LAMPE LED - BOULE - 11 W - E27 - 230 V - BLANC
NL LEDLAMP - BOL - 11 W - E27 - 230 V - WIT
DE LED-LAMPE - BALL - 11 W - E27 - 230 V - WEIß
ES BOMBILLA LED - BOLA - 11 W - E27 - 230 V - COLOR BLANCO

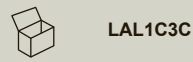
type: E27 • voltage: 230 VAC • power consumption: 11 W • equivalent incandescent lamp power: 43 W • average lifetime: 30000 h • colour temperature: 4200 K • intensity: 660 lm • colour: white • colour rendering index: Ra > 75-80 • dimmable: no • number of LEDs: 6 • beam angle: > 120° • dimensions: Ø 94 x 150 mm • weight: 370 g



LED FILAMENT A60 LAMP - E27 - 4 W - 2700 K

FR LAMPE À INCANDESCENCE LED A60 - E27 - 4 W - 2700 K
NL LED-GLOEILAMP A60 - E27 - 4 W - 2700 K
DE LED-LAMPE A60 - E27 - 4 W - 2700 K
ES BOMBILLA LED A60 - E27 - 4 W - 2700 K

type: A60 • socket: E27 • voltage: 220-240 VAC • power consumption: 4 W • equivalent incandescent lamp power: 40 W • average lifetime: 25000 h • colour temperature: 2700 K • intensity: 470 lm • colour: warm white • colour rendering index: Ra > 80 • power factor: > 0.4 • dimmable: no • beam angle: 360° • dimensions: Ø 60 x 105 mm





**LED FILAMENT G45 LAMP
- E14 - 2 W - 2700 K**

FR LAMPE À INCANDESCENCE - LED - G45 - E14 - 2 W - 2700 K
 NL LED - GLOEILAMP - G45 - E14 - 2 W - 2700 K
 DE LED-LAMPE - G45 - E14 - 2 W - 2700 K
 ES BOMBILLA LED - G45 - E14 - 2 W - 2700 K

type: G45 • socket: E14 • voltage: 200-240 VAC • power consumption: 2 W
 • equivalent incandescent lamp power: 22 W • average lifetime: 25000 h
 • colour temperature: 2700 K • intensity: 220 lm • colour: warm white • colour rendering index: Ra > 80 • power factor: > 0.4 • dimmable: no • beam angle: 360° • dimensions: Ø 45 x 75 mm



LAL2Z3B



5 410329 598648



**LED LAMP CANDLE - 3 W -
E14 - 230 V - COLD WHITE**

FR LAMPE LED - BOUGIE - 3 W - E14 - 230 V - BLANC NEUTRE
 NL LEDLAMP - KAARS - 3 W - E14 - 230 V - KOUDWIT
 DE LED-LAMPE - KERZENFORM - 3 W - E14 - 230 V - KALTWEIß
 ES BOMBILLA LED - VELA - 3 W - E14 - 230 V - COLOR BLANCO FRÍO

type: E14 • voltage: 230 VAC • power consumption: 3 W • equivalent incandescent lamp power: 18 W • average lifetime: 30000 h • colour temperature: 6400 K • intensity: 190 lm • colour: cold white • colour rendering index: Ra > 75-80 • dimmable: no • number of LEDs: 2 • beam angle: > 120° • dimensions: Ø 35 x 100 mm • weight: 52 g



LAL2A1G



5 410329 474942



**LED FILAMENT CANDLE
LAMP - E14 - 2 W - 2700 K**

FR LAMPE À INCANDESCENCE - LED - CHANDELLE - E14 - 2 W - 2700 K
 NL LED - GLOEILAMP - KAARSVORM - E14 - 2 W - 2700
 DE LED-LAMPE - KERZENFORM - E14 - 2 W - 2700 K
 ES BOMBILLA LED - VELA - E14 - 2 W - 2700 K

clear surface

type: candle • socket: E14 • voltage: 200-240 VAC • power consumption: 2 W • equivalent incandescent lamp power: 22 W • average lifetime: 25000 h • colour temperature: 2700 K • intensity: 220 lm • colour: warm white • colour rendering index: Ra > 80 • power factor: > 0.4 • dimmable: no • beam angle: 360° • dimensions: Ø 35 x 100 mm



LAL2Z3G



5 410329 598624



**LED FILAMENT TAIL LAMP
- E14 - 2 W - 2700 K**

FR LAMPE À INCANDESCENCE - LED - FLAMME BOUGIE - E14 - 2 W - 2700 K
 NL LED - GLOEILAMP - TIPKAARSVORM - E14 - 2 W - 2700 K
 DE LED-LAMPE - KERZENFORM - E14 - 2 W - 2700 K
 ES BOMBILLA LED - VELA - E14 - 2 W - 2700 K

clear surface

type: tail • socket: E14 • voltage: 200-240 VAC • power consumption: 2 W • equivalent incandescent lamp power: 22 W • average lifetime: 25000 h • colour temperature: 2700 K • intensity: 220 lm • colour: warm white • colour rendering index: Ra > 80 • power factor: > 0.4 • dimmable: no • beam angle: 360° • dimensions: Ø 35 x 125 mm



LAL2Z3H



5 410329 598631



**LED LAMP CANDLE - 3 W
- E14 - 230 V - 2700 K**

FR LAMPE LED - FLAMME BOUGIE - 3 W - E14 - 230 V - BLANC CHAUD
 NL LEDLAMP - TIPKAARS - 3 W - E14 - 230 V - WARMWIT
 DE LED-LAMPE - KERZENFORM - 3 W - E14 - 230 V - 2700 K
 ES BOMBILLA LED - VELA - 3 W - E14 - 230 V - 2700 K

type: E14 • voltage: 230 VAC • power consumption: 3 W • equivalent incandescent lamp power: 12 W • average lifetime: 30000 h • colour temperature: 2700 K • intensity: 150 lm • colour: warm white • colour rendering index: Ra > 75-80 • dimmable: no • number of LEDs: 2 • beam angle: > 120° • dimensions: Ø 35 x 129 mm • weight: 51 g



LAL2A3H



5 410329 474973



**LED LAMP PAR20 - 7.5 W -
E27 - 230 V - COLD WHITE**

FR LAMPE LED - PAR20 - 7.5 W - E27 - 230 V - BLANC FROID
 NL LEDLAMP - REFLECTOR PAR20 - 7.5 W - E27 - 230 V - KOUDWIT
 DE LED-LAMPE - REFLEKTOR PAR20 - 7.5 W - E27 - 230 V - KALTWEIß
 ES BOMBILLA LED - REFLECTOR PAR20 - 7.5 W - E27 - 230 V - COLOR BLANCO FRÍO

type: E27 • voltage: 230 VAC • power consumption: 7.5 W • equivalent incandescent lamp power: 32 W • average lifetime: 30000 h • colour temperature: 6400 K • intensity: 385 lm • colour: cold white • colour rendering index: Ra > 75-80 • dimmable: no • number of LEDs: 4 • beam angle: > 80° • dimensions: Ø 63.5 x 86 mm • weight: 135 g



LAL1H1D



5 410329 475062



LED LAMP PAR30 E27 - COB - 15 W - 3000 K

FR LAMPE LED PAR30 E27 - COB - 15 W - 3000 K
NL LED-LAMP PAR30 E27 - COB - 15 W - 3000 K
DE LED-LAMPE - COB - REFLEKTOR PAR30 - 15 W - E27 - 3000 K
ES BOMBILLA LED - COB - REFLECTOR PAR30 - 15 W - E27 - 3000 K

with SCOB LED: ◦ Stereoscopic Chip On Board ◦ a new and unique LED package technology ◦ improved performance compared to existing LED packages

type: PAR30 E27 • voltage: 230 VAC • power consumption: 15 W • equivalent incandescent lamp power: 60 W • average lifetime: 30 000 h • colour temperature: 3000 K • intensity: 800 lm • colour: warm white • colour rendering index: Ra > 80 • dimmable: no • number of LEDs: 1 • beam angle: 25° • dimensions: Ø 95 x 102 mm • weight: 217 g



LAL1E3E



5 410329 582166



LED LAMP - REFLECTOR PAR30 - 11.5 W - E27 - 230 V - WARM WHITE

FR LAMPE LED - RÉFLECTEUR PAR 30 - 7.5 W - E27 - 230 V - BLANC CHAUD
NL LEDLAMP - REFLECTOR PAR30 - 7.5 W - E27 - 230 V - WARMWIT
DE LED-LAMPE - REFLEKTOR PAR30 - 7.5 W - E27 - 230 V - WARMWEIß
ES BOMBILLA LED - REFLECTOR PAR30 - 7.5 W - E27 - 230 V - COLOR BLANCO CÁLIDO

type: E27 • voltage: 230 VAC • power consumption: 7.5 W • equivalent incandescent lamp power: 43 W • average lifetime: 30000 h • colour temperature: 2700 K • intensity: 550 lm • colour: warm white • colour rendering index: Ra > 75-80 • dimmable: no • number of LEDs: 3 • beam angle: > 120° • dimensions: Ø 95 x 80 mm • weight: 250 g



LAL1R3F



5 410329 475161



LED LAMP 4 W - GU10 - 230 V - COLD WHITE

FR LAMPE LED - 4 W - GU10 - 230 V - BLANC NEUTRE
NL LEDLAMP - 4 W - GU10 - 230 V - KOUDWIT
DE LED-LAMPE 4 W - GU10 - 230 V - KALTWEIß
ES BOMBILLA LED - 4 W - GU10 - 230 V - COLOR BLANCO FRÍO

type: GU10 • voltage: 230 VAC • power consumption: 4 W • equivalent incandescent lamp power: 17 W • average lifetime: 30 000 K • colour temperature: 6400 K • intensity: 190 lm • colour: cold white • colour rendering index: Ra > 75-80 • dimmable: no • number of LEDs: 2 • beam angle: > 100° • dimensions: Ø 50 x 58 mm • weight: 70 g



LAL3B1J



5 410329 474928



LED LAMP 4 W - GU10 - 230 V - WARM WHITE

FR LAMPE LED - 4 W - GU10 - 230 V - BLANC CHAUD
NL LEDLAMP - 4 W - GU10 - 230 V - WARMWIT
DE LED-LAMPE 4 W - GU10 - 230 V - WARMWEIß
ES BOMBILLA LED 4 W - GU10 - 230 V - COLOR BLANCO CÁLIDO

type: GU10 • voltage: 230 VAC • power consumption: 4 W • equivalent incandescent lamp power: 16 W • average lifetime: 30 000 h • colour temperature: 2700 K • intensity: 165 lm • colour: warm white • colour rendering index: Ra > 75-80 • dimmable: no • number of LEDs: 2 • beam angle: > 80° • dimensions: Ø 50 x 58 mm • weight: 70 g



LAL3B3J



5 410329 474911



LED LAMP GU10 - COB - 6 W - 3000 K

FR LAMPE LED GU10 - COB - 6 W - 3000 K
NL LEDLAMP GU10 - COB - 6 W - 3000 K
DE LED-LAMPE GU10 - COB - 6 W - 3000 K
ES BOMBILLA LED GU10 - COB - 6 W - 3000 K

with SCOB LED: ◦ Stereoscopic Chip On Board ◦ a new and unique LED package technology ◦ improved performance compared to existing LED packages

type: GU10 • voltage: 230 VAC • power consumption: 6 W • equivalent incandescent lamp power: 35 W • average lifetime: 30 000 h • colour temperature: 3000 K • intensity: 400 lm • colour: warm white • colour rendering index: Ra > 80 • dimmable: no • number of LEDs: 1 • beam angle: 36° • dimensions: Ø 50 x 72 mm • weight: 85 g



LAL3G3J



5 410329 582029



LED LAMP 5.5 W - MR16 - 12 V - COLD WHITE

FR LAMPE LED - 5.5 W - MR16 - 12 V - BLANC NEUTRE
NL LEDLAMP - 5.5 W - MR16 - 12 V - KOUDWIT
DE LED-LAMPE - 5.5 W - MR16 - 12 V - KALTWEIß
ES BOMBILLA LED - 5.5 W - MR16 - 12 V - COLOR BLANCO FRÍO

type: MR16 / GU5.3 • voltage: 12 VAC • power consumption: 5.5 W • equivalent incandescent lamp power: 23 W • average lifetime: 30 000 h • colour temperature: 6400 K • intensity: 320 lm • colour: cold white • colour rendering index: Ra > 75-80 • dimmable: no • number of LEDs: 3 • beam angle: > 80° • dimensions: Ø 50 x 44 mm • weight: 38 g



LAL4F1J



5 410329 474881



LED LAMP 5.5 W - MR16 - 12 V - WARM WHITE

FR LAMPE LED - 5.5 W - MR16 - 12 V - BLANC CHAUD
NL LEDLAMP - 5.5 W - MR16 - 12 V - WARMWIT
DE LED-LAMPE - 5.5 W - MR16 - 12 V - WARMWEIß
ES BOMBILLA LED - 5.5 W - MR16 - 12 V - COLOR BLANCO CÁLIDO

type: MR16 / GU5.3 • voltage: 12 VAC • power consumption: 5.5 W • equivalent incandescent lamp power: 22 W • average lifetime: 30 000 h • colour temperature: 2700 K • intensity: 275 lm • colour: warm white • colour rendering index: Ra > 75-80 • dimmable: no • number of LEDs: 3 • beam angle: > 80° • dimensions: Ø 50 x 44 mm • weight: 45 g



LAL4F3J



5 410329 474904





LED LAMP AR111 - COB - 15 W - 5500 K

FR LAMPE LED AR4111 - COB - 15 W - 5500 K
 NL LED-LAMP AR4111 - COB - 15 W - 5500 K
 DE LED-LAMPE AR4111 - COB - 15 W - 5500 K
 ES BOMBILLA LED AR4111 - COB - 15 W - 5500 K

reduce energy consumption by over 80 % when compared to traditional halogen lamps • 24-degree beam angle provides uniform illumination • 5500 K colour temperature is perfect for most commercial applications • with SCOB LED:
 ◦ Stereoscopic Chip On Board ◦ a new and unique LED package technology
 ◦ improved performance compared to existing LED packages

type: AR111 • socket: G53 • voltage: 12 V AC/DC • power consumption: 15 W • equivalent incandescent lamp power: 75 W • average lifetime: 30 000 h • colour temperature: 5500 K • intensity: 960 lm • colour: neutral white • colour rendering index: Ra > 80 • dimmable: no • number of LEDs: 1 • beam angle: 24° • dimensions: Ø 111 x 66.5 mm • weight: 220 g



LAL7U2M



5 410329 582012



LED SPOT - 3.2 W - GU10 - 230 V - 4000 K (3 pcs IN BLISTER)

FR SPOT LED - 3.2 W - GU10 - 230 V - 4000 K (3 pcs PAR BLISTER)
 NL LEDSPOT - 3.2 W GU10 - 230 V - 4000 K (3 st. PER BLISTER)
 DE LED-LAMPE - 3.2 W - GU10 - 230 V - 4000 K (3 St. IN BLISTER)
 ES BOMBILLA LED - 3.2 W - GU10 - 230 V - 4000 K (3 uds. EN BLISTER)

type: GU10 • voltage: 230 VAC • power consumption: 3.2 W • equivalent incandescent lamp power: 20 W • average lifetime: 30 000 h • colour temperature: 4000 K • intensity: 230 lm • colour: neutral white • colour rendering index: Ra > 80 • dimmable: no • number of LEDs: 60 • beam angle: 120° • dimensions: Ø 50 x 53 mm • weight: 43 g



LAL3A2J



5 410329 580872



LED SPOT - 3.2 W - GU10 - 230 V - 2700 K (3 pcs IN BLISTER)

FR SPOT LED - 3.2 W - GU10 - 230 V - 2700 K (3 pcs PAR BLISTER)
 NL LEDSPOT - 3.2 W - GU10 - 230 V - 2700 K (3 st. PER BLISTER)
 DE LED-LAMPE - 3.2 W - GU10 - 230 V - 2700 K (3 St. EN BLISTER)
 ES BOMBILLA LED - 3.2 W - GU10 - 230 V - 2700 K (3 uds. EN BLISTER)

type: GU10 • voltage: 230 VAC • power consumption: 3.2 W • equivalent incandescent lamp power: 20 W • average lifetime: 30 000 h • colour temperature: 2700 K • intensity: 210 lm • colour: warm white • colour rendering index: Ra > 80 • dimmable: no • number of LEDs: 60 • beam angle: 120° • dimensions: Ø 50 x 53 mm • weight: 43 g



LAL3A3J



5 410329 580353



RECESSED LED SPOTLIGHT 5 W - GU10 - 230 V - NEUTRAL WHITE

FR SPOT LED ENCASTRABLE 5 W - GU10 - 230 V - BLANC NEUTRE
 NL LED-INBOUWSPOT 5 W - GU10 - 230 V - NEUTRALWIT
 DE LED-EINBAUSTRAHLER 5 W - GU10 - 230 V - NEUTRALWEIß
 ES FOCO LED EMPOTRABLE 5 W - GU10 - 230 V - BLANCO NEUTRO

type: GU10 • voltage: 230 VAC • power consumption: 5 W • equivalent incandescent lamp power: 22 W • average lifetime: 30 000 h • colour temperature: 4200 K • intensity: 275 lm • colour: neutral white • colour rendering index: Ra > 80 • dimmable: no • number of LEDs: 1 • beam angle: 48° • dimensions: Ø 86 x 65 mm • weight: 130 g



LAL3E2K



5 410329 576981



RECESSED LED SPOTLIGHT 5 W - GU10 - 230 V - WARM WHITE

FR SPOT LED ENCASTRABLE 5 W - GU10 - 230 V - BLANC CHAUD
 NL LED-INBOUWSPOT 5 W - GU10 - 230 V - WARMWIT
 DE LED-EINBAUSTRAHLER 5 W - GU10 - 230 V - WARMWEIß
 ES FOCO LED EMPOTRABLE 5 W - GU10 - 230 V - BLANCO CÁLIDO

type: GU10 • voltage: 230 VAC • power consumption: 5 W • equivalent incandescent lamp power: 22 W • average lifetime: 30 000 h • colour temperature: 2700 K • intensity: 275 lm • colour: warm white • colour rendering index: Ra > 80 • dimmable: no • number of LEDs: 1 • beam angle: 48° • dimensions: Ø 86 x 65 mm • weight: 130 g



LAL3E3K



5 410329 576974



PROFESSIONAL COB LED CEILING LIGHT 4.4 W - ROUND MODEL - WHITE HOUSING



FR PLAFONNIER PROFESSIONNEL - LED COB 4.4 W - ROND -
BOÎTIER BLANC

NL PROFESSIONELE PLAFONDLAMP - COB LED 4.4 W - ROND - WITTE BEHUIZING

DE PROFESSIONELLE LED-DECKENLAMPE - COB LED 4.4 W - RUND - WEIßES GEHÄUSE

ES PLAFÓN LED PROFESIONAL - LED COB 4.4 W - FORMA REDONDA - CAJA BLANCA

LED ceiling light • easy installation: spring clip mounting • 1 high brightness COB (chip on board) warm white LED • housing: aluminium • housing colour: white

electrical data: ◦ power LED module: 4.4 W COB power LED ◦ total nominal power: < 6 W
◦ nominal voltage driver: 230 VAC ◦ nominal voltage LED module: 350 mA constant current / 13-23 VDC max. (incl.) ◦ power factor: - ◦ energy consumption kWh/1000 h: 5 • light technical data: ◦ colour: warm white ◦ colour temperature: 3000 K ◦ beam angle: 20°
◦ luminous flux: 360 lm ◦ colour rendering index: 81 ◦ starting time: < 0.5 s ◦ warm-up time (60 %): < 1 s • lifespan: ◦ nominal life time: 30.000 h ◦ number of switching cycles: 15.000 • dimensions & weight: ◦ dimensions LED module: Ø 78 x 72 mm ◦ cable length for each LED: ± 20 cm ◦ mounting hole diameter: 68 mm ◦ weight: 240 g



LEDA40WW



5 410329 569358



PROFESSIONAL COB LED CEILING LIGHT 6.5 W - ROUND MODEL - WHITE HOUSING



FR PLAFONNIER PROFESSIONNEL - LED COB 6.5 W - ROND -
BOÎTIER BLANC

NL PROFESSIONELE PLAFONDLAMP - COB LED 6.5 W - ROND - WITTE BEHUIZING

DE PROFESSIONELLE LED-DECKENLAMPE - COB LED 6.5 W - RUND - WEIßES GEHÄUSE

ES PLAFÓN LED PROFESIONAL - LED COB 6.5 W - FORMA REDONDA - CAJA BLANCA

LED ceiling light • easy installation: spring clip mounting • 1 high brightness COB (chip on board) warm white LED • housing: aluminium • housing colour: white

electrical data: ◦ power LED module: 6.5 W COB power LED ◦ total nominal power: < 9 W
◦ nominal voltage driver: 230 VAC ◦ nominal voltage LED module: 350 mA constant current / 13-23 VDC max. (incl.) ◦ power factor: - ◦ energy consumption kWh/1000 h: 7.5 • light technical data: ◦ colour: warm white ◦ colour temperature: 3000 K ◦ beam angle: 20°
◦ luminous flux: 550 lm ◦ colour rendering index: 81 ◦ starting time: < 0.5 s ◦ warm-up time (60 %): < 1 s • lifespan: ◦ nominal life time: 30.000 h ◦ number of switching cycles: 15.000 • dimensions & weight: ◦ dimensions LED module: Ø 78 x 72 mm ◦ cable length for each LED: ± 20 cm ◦ mounting hole diameter: 68 mm ◦ weight: 240 g



LEDA41WW



5 410329 569365



PROFESSIONAL COB LED CEILING LIGHT 12.6 W - ROUND MODEL - WHITE HOUSING



FR PLAFONNIER PROFESSIONNEL - LED COB 12.6 W - ROND -
BOÎTIER BLANC

NL PROFESSIONELE PLAFONDLAMP - COB LED 12.6 W - ROND - WITTE BEHUIZING

DE PROFESSIONELLE LED-DECKENLAMPE - COB LED 12.6 W - RUND - WEIßES GEHÄUSE

ES PLAFÓN LED PROFESIONAL - LED COB 12.6 W - FORMA REDONDA - CAJA BLANCA

LED ceiling light • easy installation: spring clip mounting • 1 high brightness COB (chip on board) warm white LED • housing: aluminium • housing colour: white

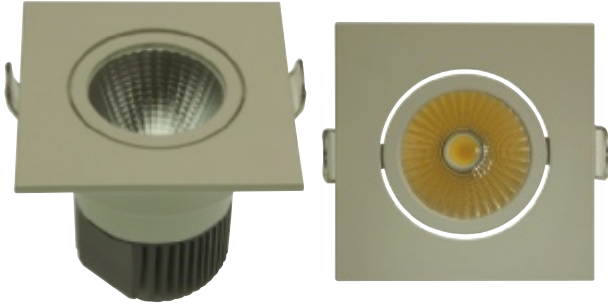
electrical data: ◦ power LED module: 12.6 W COB power LED ◦ total nominal power: < 16 W
◦ nominal voltage driver: 230 VAC ◦ nominal voltage LED module: 600 mA constant current / 18-27 VDC max. (incl.) ◦ power factor: - ◦ energy consumption kWh/1000 h: 14 • light technical data: ◦ colour: warm white ◦ colour temperature: 3000 K ◦ beam angle: 25°
◦ luminous flux: 1065 lm ◦ colour rendering index: 81 ◦ starting time: < 0.5 s ◦ warm-up time (60 %): < 1 s • lifespan: ◦ nominal life time: 30.000 h ◦ number of switching cycles: 15.000 • dimensions & weight: ◦ dimensions LED module: Ø 84 x 90 mm ◦ cable length for each LED: ± 20 cm ◦ mounting hole diameter: 74 mm ◦ weight: 400 g



LEDA42WW



5 410329 569372



**PROFESSIONAL COB LED
CEILING LIGHT 4.4 W - SQUARE
MODEL - WHITE HOUSING**



FR: PLAFONNIER PROFESSIONNEL - LED COB 4.4 W - CARRÉ - BOÎTIER BLANC

NL: PROFESSIONELE PLAFONDLAMP - COB LED 4.4 W - VIERKANT - WITTE BEHUIZING

DE: PROFESSIONELLE LED-DECKENLAMPE - COB LED 4.4 W - VIERECKIG - WEIßES GEHÄUSE

ES: PLAFÓN LED PROFESIONAL - LED COB 4.4 W - FORMA CUADRADA - CAJA BLANCA

LED ceiling light • easy installation: spring clip mounting • 1 high brightness COB (chip on board) warm white LED • housing: aluminium • housing colour: white

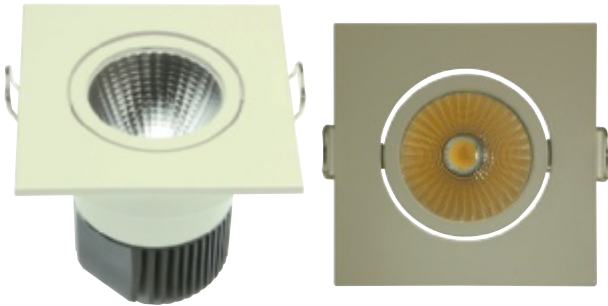
electrical data: ◦ power LED module: 4.4 W COB power LED ◦ total nominal power: < 6 W
◦ nominal voltage driver: 230 VAC ◦ nominal voltage LED module: 350 mA constant current / 13-23 VDC max. (incl.) ◦ power factor: - ◦ energy consumption kWh/1000 h: 5 • light technical data: ◦ colour: warm white ◦ colour temperature: 3000 K ◦ beam angle: 20°
◦ luminous flux: 360 lm ◦ colour rendering index: 81 ◦ starting time: < 0.5 s ◦ warm-up time (60 %): < 1 s • lifespan: ◦ nominal life time: 30.000 h ◦ number of switching cycles: 15.000 • dimensions & weight: ◦ dimensions LED module: 80 x 80 x 72 mm ◦ cable length for each LED: ± 20 cm ◦ mounting hole diameter: 68 mm ◦ weight: 260 g



LEDA43WW



5 410329 569389



**PROFESSIONAL COB LED
CEILING LIGHT 6.5 W - SQUARE
MODEL - WHITE HOUSING**



FR: PLAFONNIER PROFESSIONNEL - LED COB 6.5 W - CARRÉ - BOÎTIER BLANC

NL: PROFESSIONELE PLAFONDLAMP - COB LED 6.5 W - VIERKANT - WITTE BEHUIZING

DE: PROFESSIONELLE LED-DECKENLAMPE - COB LED 6.5 W - VIERECKIG - WEIßES GEHÄUSE

ES: PLAFÓN LED PROFESIONAL - LED COB 6.5 W - FORMA CUADRADA - CAJA BLANCA

LED ceiling light • easy installation: spring clip mounting • 1 high brightness COB (chip on board) warm white LED • housing: aluminium • housing colour: white

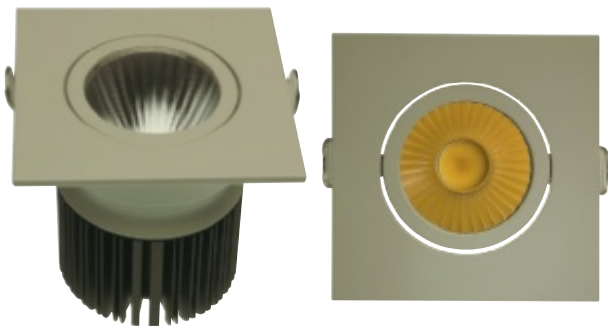
electrical data: ◦ power LED module: 6.5 W COB power LED ◦ total nominal power: < 9 W
◦ nominal voltage driver: 230 VAC ◦ nominal voltage LED module: 350 mA constant current / 13-23 VDC max. (incl.) ◦ power factor: - ◦ energy consumption kWh/1000 h: 7.5 • light technical data: ◦ colour: warm white ◦ colour temperature: 3000 K ◦ beam angle: 20°
◦ luminous flux: 550 lm ◦ colour rendering index: 81 ◦ starting time: < 0.5 s ◦ warm-up time (60 %): < 1 s • lifespan: ◦ nominal life time: 30.000 h ◦ number of switching cycles: 15.000 • dimensions & weight: ◦ dimensions LED module: 80 x 80 x 72 mm ◦ cable length for each LED: ± 20 cm ◦ mounting hole diameter: 68 mm ◦ weight: 260 g



LEDA44WW



5 410329 569396



**PROFESSIONAL COB LED
CEILING LIGHT 12.6 W - SQUARE
MODEL - WHITE HOUSING**



FR: PLAFONNIER PROFESSIONNEL - LED COB 12.6 W - CARRÉ - BOÎTIER BLANC

NL: PROFESSIONELE PLAFONDLAMP - COB LED 12.6 W - VIERKANT - WITTE BEHUIZING

DE: PROFESSIONELLE LED-DECKENLAMPE - COB LED 12.6 W - VIERECKIG - WEIßES GEHÄUSE

ES: PLAFÓN LED PROFESIONAL - LED COB 12.6 W - FORMA CUADRADA - CAJA BLANCA

LED ceiling light • easy installation: spring clip mounting • 1 high brightness COB (chip on board) warm white LED • housing: aluminium • housing colour: white

electrical data: ◦ power LED module: 12.6 W COB power LED ◦ total nominal power: < 16 W
◦ nominal voltage driver: 230 VAC ◦ nominal voltage LED module: 600 mA constant current / 18-27 VDC max. (incl.) ◦ power factor: - ◦ energy consumption kWh/1000 h: 14 • light technical data: ◦ colour: warm white ◦ colour temperature: 3000 K ◦ beam angle: 25°
◦ luminous flux: 1065 lm ◦ colour rendering index: 81 ◦ starting time: < 0.5 s ◦ warm-up time (60 %): < 1 s • lifespan: ◦ nominal life time: 30.000 h ◦ number of switching cycles: 15.000 • dimensions & weight: ◦ dimensions LED module: 90 x 90 x 90 mm ◦ cable length for each LED: ± 20 cm ◦ mounting hole diameter: 74 mm ◦ weight: 420 g



LEDA45WW



5 410329 569419



LED RECESSED SPOTLIGHT - NEUTRAL WHITE - 4200 K



FR SPOT LED ENCASTRABLE - BLANC NEUTRE (4200 K)
NL LED-INBOUWSPOT - NEUTRAALWIT (4200 K)
DE LED-EINBAULEUCHTE - NEUTRALWEIß (4200 K)
ES LUMINARIA LED PARA EMPOTRAR - COLOR BLANCO NEUTRO (4200 K)

ceiling LED light, easy installation • very bright LEDs • energy saving • extra long life-time
• IP44

voltage (V): 230 VAC, 50 Hz • power consumption (W): 4.5 • socket: cable connector
• average lifetime (h): 50 000 • colour temperature (K): 4200 • intensity (lm): 350 • beam
angle: 120° • colour: neutral white • dimmable: no • number of LEDs: 45 (SMD LED)
• dimensions: Ø 87 x 48 mm • mounting hole diameter: 79 mm



► May not be sold in France



LEDA23NW



5 410329 465469



LED RECESSED SPOTLIGHT - NEUTRAL WHITE - 4200 K - 12 V



FR SPOT LED ENCASTRABLE - BLANC NEUTRE (4200 K) 12 V
NL LED-INBOUWSPOT - NEUTRAALWIT (4200 K) 12 V
DE LED-EINBAULAMPE - NEUTRALWEIß (4200 K) 12 V
ES LÁMPARA LED PARA EMPOTRAR - COLOR BLANCO NEUTRO (4200 K) 12 V

ceiling LED light, easy installation • very bright LEDs • energy saving • extra long life-time
• IP44

voltage (V): 12 • power consumption (W): 4.5 • socket: cable connector • average lifetime
(h): 50 000 • colour temperature (K): 4200 • intensity (lm): 350 • beam angle: 120° • colour:
neutral white • dimmable: no • number of LEDs: 45 (SMD LED) • dimensions: Ø 87 x 30 mm
• mounting hole diameter: 79 mm



LEDA23NW/12



5 410329 465537



LED RECESSED SPOTLIGHT WITH DIFFUSER LENS - NEUTRAL WHITE - 4200 K



FR SPOT LED ENCASTRABLE - LENTILLE DIFFUSANTE - BLANC
NEUTRE (4200 K)
NL LED INBOUWSPOT MET DIFFUSERLENS - NEUTRAALWIT (4200 K)
DE LED-EINBAULAMPE MIT DIFFUSER-LINSE - NEUTRALWEIß (4200 K)
ES LÁMPARA LED PARA EMPOTRAR CON LENTE DIFUSORA - COLOR BLANCO NEUTRO
(4200 K)

ceiling LED light, easy installation • very bright LEDs • energy saving • extra long life-time
• IP44 • with diffuser lens

voltage (V): 230 VAC, 50 Hz • power consumption (W): 4.5 • socket: cable connector
• average lifetime (h): 50 000 • colour temperature (K): 4200 • intensity (lm): 220 • beam
angle: 60° • colour: neutral white • colour rendering index: 83 • starting time: <
0.5 s • warm-up time (60 %): < 1 s • dimmable: no • number of LEDs: 45 (SMD LED)
• dimensions: Ø 78 x 72 mm • mounting hole diameter: 59 mm



LEDA24NW



5 410329 465490



**LED RECESSED SPOTLIGHT
WITH DIFFUSER LENS - NEUTRAL
WHITE - 4200 K - 12 V**



FR: SPOT LED ENCASTRABLE - LENTILLE DIFFUSANTE - BLANC NEUTRE (4200 K) 12 V
 NL: LED INBOUWSPOT MET DIFFUSERLENS - NEUTRALWIT (4200 K) 12 V
 DE: LED-EINBAULAMPE MIT DIFFUSER-LINSE - NEUTRALWEIß (4200 K) 12 V
 ES: LÁMPARA LED PARA EMPOTRAR - LENTE DIFUSORA - COLOR BLANCO NEUTRO (4200 K) 12 V

ceiling LED light, easy installation • very bright LEDs • energy saving • extra long life-time
 • IP44 • with diffuser lens

voltage (V): 12 • power consumption (W): 3 • socket: cable connector • average lifetime (h): 50 000 • colour temperature (K): 4200 • intensity (lm): 220 • beam angle: 60° • colour: neutral white • colour rendering index: 83 • starting time: < 0.5 s • warm-up time (60 %): < 1 s • dimmable: no • number of LEDs: 45 (SMD LED) • dimensions: Ø 78 x 54 mm
 • mounting hole diameter: 59 mm



LEDA24NW/12



5 410329 465551



**LED RECESSED SPOTLIGHT
WITH OPAQUE LENS -
WARM WHITE - 3200 K**



FR: SPOT LED ENCASTRABLE - LENTILLE OPAQUE - BLANC CHAUD (3200 K)
 NL: LED INBOUWSPOT MET OPAKE LENS - WARMWIT (3200 K)
 DE: LED-EINBAULAMPE MIT MATTGLAS - WARMWEIß (3200 K)
 ES: LÁMPARA LED PARA EMPOTRAR CON CRISTAL OPACO - COLOR BLANCO CÁLIDO (3200 K)

ceiling LED light, easy installation • very bright LEDs • energy saving • extra long life-time
 • IP44 • with opaque lens

voltage (V): 230 VAC, 50 Hz • power consumption (W): 4.5 • socket: cable connector
 • average lifetime (h): 50 000 • colour temperature (K): 3200 • intensity (lm): 220 • beam angle: 60° • colour: warm white • colour rendering index: 81 • starting time: < 0.5 s • warm-up time (60 %): < 1 s • dimmable: no • number of LEDs: 45 (SMD LED) • dimensions: Ø 78 x 72 mm • mounting hole diameter: 59 mm



LEDA24WW



5 410329 465797



**LED RECESSED SPOTLIGHT
WITH DIFFUSER LENS - WARM
WHITE - 2700 K - 12 V**



FR: SPOT LED ENCASTRABLE - LENTILLE DIFFUSANTE - BLANC CHAUD (3200 K) 12 V
 NL: LED INBOUWSPOT MET DIFFUSERLENS - WARMWIT (3200 K) 12 V
 DE: LED-EINBAULAMPE MIT DIFFUSER-LINSE - WARMWEIß (3200 K) 12 V
 ES: LÁMPARA LED PARA EMPOTRAR CON LENTE DIFUSORA - COLOR BLANCO CÁLIDO (3200 K) 12 V

ceiling LED light, easy installation • very bright LEDs • energy saving • extra long life-time
 • IP44 • with flood lens

voltage (V): 12 • power consumption (W): 3 • socket: cable connector • average lifetime (h): 50 000 • colour temperature (K): 3200 • intensity (lm): 220 • beam angle: 60° • colour: warm white • colour rendering index: 81 • starting time: < 0.5 s • warm-up time (60 %): < 1 s • dimmable: no • number of LEDs: 45 (SMD LED) • dimensions: Ø 78 x 54 mm • mounting hole diameter: 59 mm



LEDA24WW/12



5 410329 465544



LED RECESSED SPOTLIGHT - NEUTRAL WHITE - 4200 K



FR SPOT LED ENCASTRABLE - BLANC NEUTRE (4200 K)
NL LED-INBOUWSPOT - NEUTRAALWIT (4200 K)
DE LED-EINBAULAMPE - NEUTRALWEIß (4200 K)
ES LÁMPARA LED PARA EMPOTRAR - COLOR BLANCO NEUTRO (4200 K)

ceiling LED light, easy installation • white fixture • very bright LEDs • energy saving • extra long life-time • IP44

voltage (V): 230 VAC, 50 Hz • power consumption (W): 4.5 • socket: cable connector
• average lifetime (h): 50 000 • colour temperature (K): 4200 • intensity (lm): 350 • beam angle: 120° • colour: neutral white • dimmable: no • number of LEDs: 45 (SMD LED)
• dimensions: Ø 87 x 48 mm • mounting hole diameter: 79 mm



► May not be sold in France



LEDA25NW



5 410329 465513



LED RECESSED SPOTLIGHT - NEUTRAL WHITE - 4200 K - 12 V



FR SPOT LED ENCASTRABLE - BLANC NEUTRE (4200 K) 12 V
NL LED-INBOUWSPOT - NEUTRAALWIT (4200 K) 12 V
DE LED-EINBAULAMPE - NEUTRALWEIß (4200 K) 12 V
ES LÁMPARA LED PARA EMPOTRAR - COLOR BLANCO NEUTRO (4200 K) 12 V

ceiling LED light, easy installation • white fixture • very bright LEDs • energy saving • extra long life-time • IP44

voltage (V): 12 • power consumption (W): 4.5 • socket: cable connector • average lifetime (h): 50 000 • colour temperature (K): 4200 • intensity (lm): 350 • beam angle: 120° • colour: neutral white • dimmable: no • number of LEDs: 45 (SMD LED) • dimensions: Ø 87 x 30 mm • mounting hole diameter: 79 mm



LEDA25NW/12



5 410329 465575



LED RECESSED SPOTLIGHT - WARM WHITE - 3200 K



FR SPOT LED ENCASTRABLE - BLANC CHAUD (3200 K)
NL LED-INBOUWSPOT - WARMWIT - 3200 K
DE LED-EINBAULAMPE - WARMWEIß (3200 K)
ES LÁMPARA LED PARA EMPOTRAR - COLOR BLANCO CÁLIDO (3200 K)

ceiling LED light, easy installation • white fixture • very bright LEDs • energy saving • extra long life-time • IP44

voltage (V): 230 VAC, 50 Hz • power consumption (W): 4.5 • socket: cable connector
• average lifetime (h): 50 000 • colour temperature (K): 3200 • intensity (lm): 300 • beam angle: 120° • colour: warm white • dimmable: no • number of LEDs: 45 (SMD LED)
• dimensions: Ø 87 x 48 mm • mounting hole diameter: 79 mm



► May not be sold in France



LEDA25WW



5 410329 465506



LED RECESSED SPOTLIGHT - WARM WHITE - 2700 K - 12 V



FR SPOT LED ENCASTRABLE - BLANC CHAUD (3200 K) 12 V
NL LED-INBOUWSPOT - WARMWIT (3200 K) 12 V
DE LED-EINBAULAMPE - WARMWEIß (3200 K) 12 V
ES LÁMPARA LED PARA EMPOTRAR - COLOR BLANCO CÁLIDO (3200 K) 12 V

ceiling LED light, easy installation • white fixture • very bright LEDs • energy saving • extra long life-time • IP44

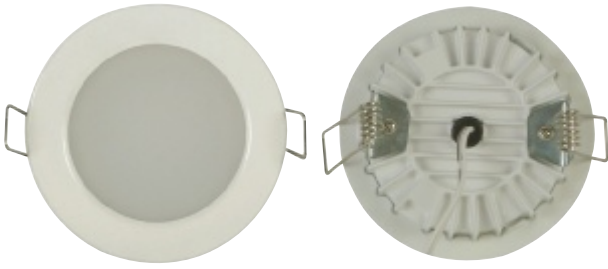
voltage (V): 12 • power consumption (W): 4.5 • socket: cable connector • average lifetime (h): 50 000 • colour temperature (K): 3200 • intensity (lm): 300 • beam angle: 120° • colour: warm white • dimmable: no • number of LEDs: 45 (SMD LED) • dimensions: Ø 87 x 30 mm • mounting hole diameter: 79 mm



LEDA25WW/12



5 410329 465568



LED CEILING LIGHT 5 W - ROUND MODEL - NEUTRAL WHITE



FR PLAFONNIER À LED 5 W - ROND - BLANC NEUTRE
 NL LED PLAFONDARMATUUR 5 W - ROND - NEUTRAALWIT
 DE LED-DECKENLEUCHTE 5 W - RUND - NEUTRALWEIß
 ES PLAFÓN LED DE 5 W - REDONDO - COLOR BLANCO NEUTRO

LED ceiling light • easy installation: spring clip mounting • high brightness neutral white LEDs

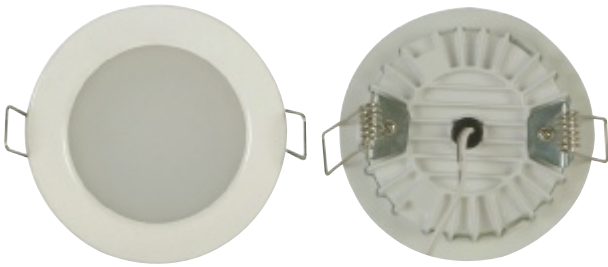
LED type: 3528 • luminous flux: 280 lm • input voltage: 100 - 240 VAC • operating voltage: 12 VDC (constant voltage - power adapter incl.) • power consumption: 5 W • colour: neutral white • colour temperature: 3900 K • Ra: 84 • housing: aluminium • diffuser: frosted PMMA 2 mm • beam angle: 120° • dimensions: Ø 82 x 17 mm • weight: 90 g • mounting hole diameter: 72 mm



LEDA30NW



5 410329 477660



LED CEILING LIGHT 5 W - ROUND MODEL - WARM WHITE



FR PLAFONNIER À LED 5 W - ROND - BLANC CHAUD
 NL LED PLAFONDARMATUUR 5 W - ROND - WARMWIT
 DE LED-DECKENLEUCHTE 5 W - RUND - WARMWEIß
 ES PLAFÓN LED DE 5 W - REDONDO - COLOR BLANCO CÁLIDO

LED ceiling light • easy installation: spring clip mounting • high brightness warm white LEDs

LED type: 3528 • luminous flux: 280 lm • input voltage: 100 - 240 VAC • operating voltage: 12 VDC (constant voltage - power adapter incl.) • power consumption: 5 W • colour: warm white • colour temperature: 2950 K • Ra: 82 • housing: aluminium • diffuser: frosted PMMA 2 mm • beam angle: 120° • dimensions: Ø 82 x 17 mm • weight: 90 g • mounting hole diameter: 72 mm



LEDA30WW



5 410329 572174



LED CEILING LIGHT 10 W - ROUND MODEL - NEUTRAL WHITE



FR PLAFONNIER À LED 10 W - ROND - BLANC NEUTRE
 NL LED PLAFONDARMATUUR 10 W - ROND - NEUTRAALWIT
 DE LED-DECKENLEUCHTE 10 W - RUND - NEUTRALWEIß
 ES PLAFÓN LED DE 10 W - REDONDO - COLOR BLANCO NEUTRO

LED ceiling light • easy installation: spring clip mounting • high brightness neutral white LEDs

LED type: 3528 • luminous flux: 650 lm • input voltage: 100 - 240 VAC • operating voltage: 12 VDC (constant voltage - power adapter incl.) • power consumption: 10 W • colour: neutral white • colour temperature: 3900 K • Ra: 84 • housing: aluminium • diffuser: frosted PMMA 2 mm • beam angle: 120° • dimensions: Ø 114 x 18 mm • weight: 170 g • mounting hole diameter: 102 mm



LEDA31NW



5 410329 477677



LED CEILING LIGHT 10 W - ROUND MODEL - WARM WHITE



FR PLAFONNIER À LED 10 W - ROND - BLANC CHAUD
 NL LED PLAFONDARMATUUR 10 W - ROND - WARMWIT
 DE LED-DECKENLEUCHTE 10 W - RUND - WARMWEIß
 ES PLAFÓN LED DE 10 W - REDONDO - COLOR BLANCO CÁLIDO

LED ceiling light • easy installation: spring clip mounting • high brightness warm white LEDs

LED type: 3528 • luminous flux: 650 lm • input voltage: 100 - 240 VAC • operating voltage: 12 VDC (constant voltage - power adapter incl.) • power consumption: 10 W • colour: warm white • colour temperature: 2950 K • Ra: 82 • housing: aluminium • diffuser: frosted PMMA 2 mm • beam angle: 120° • dimensions: Ø 114 x 18 mm • weight: 170 g • mounting hole diameter: 102 mm



LEDA31WW



5 410329 572211



LED CEILING LIGHT 12 W - ROUND MODEL - NEUTRAL WHITE



FR PLAFONNIER À LED 12 W - ROND - BLANC NEUTRE
NL LED PLAFONDARMATUUR 12 W - ROND - NEUTRAALWIT
DE LED-DECKENLEUCHTE 12 W - RUND - NEUTRALWEIß
ES PLAFÓN LED DE 12 W - REDONDO - COLOR BLANCO NEUTRO

LED ceiling light • easy installation: spring clip mounting • high brightness neutral white LEDs

LED type: 3528 • luminous flux: 780 lm • input voltage: 100 - 240 VAC • operating voltage: 12 VDC (constant voltage - power adapter incl.) • power consumption: 12 W • colour: neutral white • colour temperature: 3900 K • Ra: 84 • housing: aluminium • diffuser: frosted PMMA 2 mm • beam angle: 120° • dimensions: Ø 148 x 18 mm • weight: 270 g • mounting hole diameter: 134 mm



LEDA32NW



5 410329 477684



LED CEILING LIGHT 12 W - ROUND MODEL - WARM WHITE



FR PLAFONNIER À LED 12 W - ROND - BLANC CHAUD
NL LED PLAFONDARMATUUR 12 W - ROND - WARMWIT
DE LED-DECKENLEUCHTE 12 W - RUND - WARMWEIß
ES PLAFÓN LED DE 12 W - REDONDO - COLOR BLANCO CÁLIDO

LED ceiling light • easy installation: spring clip mounting • high brightness warm white LEDs

LED type: 3528 • luminous flux: 780 lm • input voltage: 100 - 240 VAC • operating voltage: 12 VDC (constant voltage - power adapter incl.) • power consumption: 12 W • colour: warm white • colour temperature: 2950 K • Ra: 82 • housing: aluminium • diffuser: frosted PMMA 2 mm • beam angle: 120° • dimensions: Ø 148 x 18 mm • weight: 270 g • mounting hole diameter: 134 mm



LEDA32WW



5 410329 572235



LED CEILING LIGHT 16 W - ROUND MODEL - NEUTRAL WHITE



FR PLAFONNIER À LED 16 W - ROND - BLANC NEUTRE
NL LED PLAFONDARMATUUR 16 W - ROND - NEUTRAALWIT
DE LED-DECKENLEUCHTE 16 W - RUND - NEUTRALWEIß
ES PLAFÓN LED DE 16 W - REDONDO - COLOR BLANCO NEUTRO

LED ceiling light • easy installation: spring clip mounting • high brightness neutral white LEDs

LED type: 3528 • luminous flux: 1120 lm • input voltage: 100 - 240 VAC • operating voltage: 12 VDC (constant voltage - power adapter incl.) • power consumption: 16 W • colour: neutral white • colour temperature: 3900 K • Ra: 84 • housing: white coated aluminium • diffuser: frosted PMMA 2 mm • beam angle: 120° • dimensions: Ø 206 x 19 mm • weight: 500 g • mounting hole diameter: 185 mm



LEDA33NW



5 410329 477691



LED CEILING LIGHT 16 W - ROUND MODEL - WARM WHITE



FR PLAFONNIER À LED 16 W - ROND - BLANC CHAUD
NL LED PLAFONDARMATUUR 16 W - ROND - WARMWIT
DE LED-DECKENLEUCHTE 16 W - RUND - WARMWEIß
ES PLAFÓN LED DE 16 W - REDONDO - COLOR BLANCO CÁLIDO

LED ceiling light • easy installation: spring clip mounting • high brightness warm white LEDs

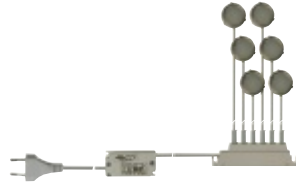
LED type: 3528 • luminous flux: 1120 lm • input voltage: 100 - 240 VAC • operating voltage: 12 VDC (constant voltage - power adapter incl.) • power consumption: 16 W • colour: warm white • colour temperature: 2950 K • Ra: 82 • housing: aluminium • diffuser: frosted PMMA 2 mm • beam angle: 120° • dimensions: Ø 206 x 19 mm • weight: 500 g • mounting hole diameter: 185 mm



LEDA33WW



5 410329 572242



LED INDOOR LIGHTS RECESSED MOUNTING - 6 x 0.3 W - WARM WHITE



FR: ÉCLAIRAGE INTÉRIEUR LED - MONTAGE ENCASTRÉ - 6 x 0.3 W - BLANC CHAUD
 NL: LED-BINNENVERLICHTING - INBOUWMONTAGE - 6 x 0.3 W - WARMWIT
 DE: LED-SCHRANKLAMPEN - UNTERPUTZMONTAGE - 6 x 0.3 W - WARMWEIß
 ES: LÁMPARAS LED PARA ARMARIO - MONTAJE EMPOTRADO - 6 x 0.3 W - COLOR BLANCO CÁLIDO

LED module with frosted lens • recessed mounting • indoor use • housing: aluminium

electrical data: ◦ power LED module: 0.3 W x 6 ◦ total nominal power: 2.3 W ◦ nominal voltage driver: 230 VAC ◦ nominal voltage LED module: 12 VDC / 6 W (incl.) ◦ power factor: 0.59 ◦ energy consumption kWh/1000 h: - • light technical data: ◦ colour: warm white ◦ colour temperature: 3000 K ◦ beam angle: 120° ◦ luminous flux: 3 lm/module ◦ colour rendering index: 84 ◦ starting time: < 0.5 s ◦ warm-up time (60 %): < 1 s • lifespan: ◦ nominal life time: 15.000 h ◦ number of switching cycles: 10.000 • dimensions & weight: ◦ dimensions LED module: Ø 30 x 14 mm ◦ cable length for each LED: 100 cm ◦ mounting hole diameter: 23 mm



LEDA36WW



5 410329 573089



LED CEILING LIGHT 14 W - ROUND MODEL - NEUTRAL WHITE



FR: PLAFONNIER À LED 14 W - ROND - BLANC NEUTRE
 NL: LED-PLAFONDARMATUUR 14 W - ROND - NEUTRAALWIT
 DE: LED-DECKENLEUCHTE 14 W - RUND - NEUTRALWEIß
 ES: PLAFÓN LED DE 14 W - REDONDO - COLOR BLANCO NEUTRO

LED ceiling light • easy installation • surface mounting • housing colour: white

electrical data: ◦ power LED module: 120 pieces 3014 LEDs ◦ total nominal power: < 14 W ◦ nominal voltage driver: 230 VAC ◦ power factor: 0.98 ◦ energy consumption kWh/1000 h: 14 • light technical data: ◦ colour: neutral white ◦ colour temperature: 4100 K ◦ beam angle: 120° ◦ luminous flux: 975 lm (without cover) ◦ colour rendering index: 84 ◦ starting time: < 0.5 s ◦ warm-up time (60 %): < 1 s • lifespan: ◦ nominal life time: 30.000 h ◦ number of switching cycles: 15.000 • dimensions & weight: ◦ dimensions LED module: Ø 263 x 90 mm ◦ weight: 410 g



LEDA37NW



5 410329 595647

SPARE COVER FOR LED CEILING LIGHT LEDA37NW

FR: GLOBE DE RECHANGE POUR PLAFONNIER À LED LEDA37NW
 NL: RESERVEKAP VOOR LED-PLAFONDARMATUUR LEDA37NW
 DE: ERSATZ-LAMPENSCHIRM FÜR DIE LED-DECKENLEUCHTE LEDA37NW
 ES: PANTALLA DE RECAMBIO PARA EL PLAFÓN LEDA37NW

for: LEDA37NW



SP1



5 410329 596309



LEDA37NW/



LED CEILING LIGHT 19 W - ROUND MODEL - NEUTRAL WHITE



FR: PLAFONNIER À LED 19 W - ROND - BLANC NEUTRE
 NL: LED-PLAFONDARMATUUR 19 W - ROND - NEUTRAALWIT
 DE: LED-DECKENLEUCHTE 19 W - RUND - NEUTRALWEIß
 ES: PLAFÓN LED DE 19 W - REDONDO - COLOR BLANCO NEUTRO

LED ceiling light • easy installation • surface mounting • housing colour: white

electrical data: ◦ power LED module: 180 pieces 3014 LEDs ◦ total nominal power: < 19 W ◦ nominal voltage driver: 230 VAC ◦ power factor: 0.97 ◦ energy consumption kWh/1000 h: 19 • light technical data: ◦ colour: neutral white ◦ colour temperature: 4100 K ◦ beam angle: 120° ◦ luminous flux: 1306 lm (without cover) ◦ colour rendering index: 84 ◦ starting time: < 0.5 s ◦ warm-up time (60 %): < 1 s • lifespan: ◦ nominal life time: 30.000 h ◦ number of switching cycles: 15.000 • dimensions & weight: ◦ dimensions LED module: Ø 325 x 100 mm ◦ weight: 590 g



LEDA38NW



5 410329 577407



SPARE COVER FOR LED CEILING LIGHT LEDA38NW

FR GLOBE DE RECHANGE POUR PLAFONNIER À LED LEDA38NW
NL RESERVEKAP VOOR LED-PLAFONDARMATUUR LEDA38NW
DE ERSATZ-LAMPENSCHIRM FÜR DIE LED-DECKENLEUCHTE LEDA38NW
ES PANTALLA DE RECAMBIO PARA EL PLAFÓN LEDA38NW

for: LEDA38NW



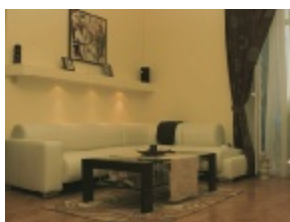
LEDA38NW/



SP1



5 410329 596316



LED CABINET LIGHTS - 3 x 1.2 W - NEUTRAL WHITE

FR ÉCLAIRAGE D'ARMOIRE À LED - 3 x 1.2 W - BLANC NEUTRE
NL LED-KASTVERLICHTING - 3 x 1.2 W - NEUTRAALWIT
DE LED-SCHRANKLAMPEN - 3 x 1,2 W - NEUTRALWEIß
ES LÁMPARAS LED PARA ARMARIO - 3 x 1.2 W - BLANCO NEUTRO



3 powerful LED cabinet lights with power adapter and distribution connector.

LED module with frosted lens • screw mounting • indoor use

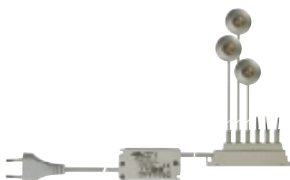
colour: neutral white • luminous flux: 80 lm/module • power consumption: 1.2 W x 3 • LEDs: 18 x 3 pcs • beam angle: 120° • dimensions: Ø 65 x 6 mm • cable length: 120 cm • power adapter: 12 VDC / 6 W (incl.) • weight: 35 g (per piece)



LEDA34NW



5 410329 474898



LED INDOOR LIGHTS SURFACE MOUNTING - 3 x 1 W - WARM WHITE

FR ÉCLAIRAGE INTÉRIEUR LED - MONTAGE EN SURFACE - 3 x 1 W - BLANC CHAUD
NL LED-BINNENVERLICHTING - OPBOUWMONTAGE - 3 x 1 W - WARMWIT
DE LED-SCHRANKBELEUCHTUNG - AUFPUTZMONTAGE - 3 x 1 W - WARMWEIß
ES ILUMINACIÓN LED PARA ARMARIO - MONTAJE EN SUPERFICIE - 3 x 1 W - COLOR BLANCO CÁLIDO



3 cabinet LED lights for surface mounting including LED driver and distribution connector.

LED module with lens • surface mounting • indoor use

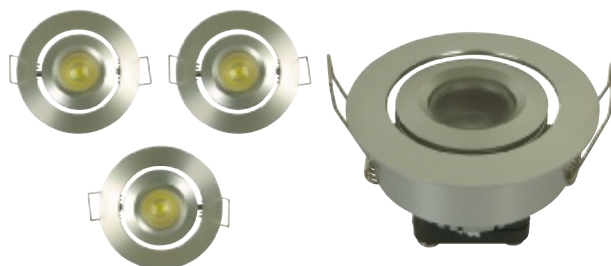
electrical data: • power LED module: 1 W x 3 • total nominal power: 4.6 W • nominal voltage driver: 230 VAC • nominal voltage LED module: 350 mA constant current / 24 VDC max. (incl.) • power factor: 0.67 • energy consumption kWh/1000 h: • light technical data: • colour: warm white • colour temperature: 3000-3100 K • beam angle: 50° • luminous flux: 32 lm/module • colour rendering index: >80 • starting time: < 0.5 s • warm-up time (60 %): < 1 s • lifespan: • nominal life time: 15.000 h • number of switching cycles: 10.000 • dimensions & weight: • dimensions LED module: Ø 31 x 21 mm • cable length for each LED: 100 cm • mounting hole diameter: 25 mm



LEDA35WW



5 410329 573126



LED CEILING LIGHT KIT 3 x 1 W - ALUMINIUM HOUSING

FR JEU DE PLAFONNIERS LED - 3 x 1 W - BOÎTIER EN ALUMINIUM
NL LED-INBOUWSPOTS RICHTBAAR - 3 STUKS
DE KIT MIT LED-LEUCHTEN - 3 x 1 W - ALUMINIUMGEHÄUSE
ES JUEGO DE LUMINARIAS LED - 3 x 1 W - CAJA DE ALUMINIO



LED ceiling light • easy installation: spring clip mounting • 3 high brightness neutral white 1 W LEDs

electrical data: • power LED module: 1 W x 3 • total nominal power: <4.5 W • nominal voltage driver: 100-240 VAC • nominal voltage LED module: 350 mA constant current / 12 VDC max. (incl.) • power factor: 0.5 • energy consumption kWh/1000 h: 1.1 • light technical data: • colour: neutral white • colour temperature: 4300 K • beam angle: 45° • luminous flux: 95 lm/module • colour rendering index: • starting time: < 0.5 s • warm-up time (60 %): < 1 s • lifespan: • nominal life time: 30.000 h • number of switching cycles: 15.000 • dimensions & weight: • dimensions LED module: Ø 52 x 33 mm • cable length for each LED: - cm • mounting hole diameter: 46-48 mm • weight: 180g • housing: aluminium



LEDA49NW



5 410329 563790



SELF-ADHESIVE LED LIGHTS - 3 pcs

PEREL®

FR LAMPES LED AUTOADHÉSIVES - 3 pcs
 NL ZELFKLEVENDE LEDLAMPEN - 3 st.
 DE SELBSTKLEBENDE LED-LAMPEN - 3 St.
 ES LÁMPARAS LED AUTOADHESIVAS - 3 uds.

3 self-adhesive LED lights in a double blister.

adhesive back for easy fixation on many surfaces • ± 100h battery lifetime (using alkaline batteries) • simply push to switch on or off • twist-lock for easy battery replacement

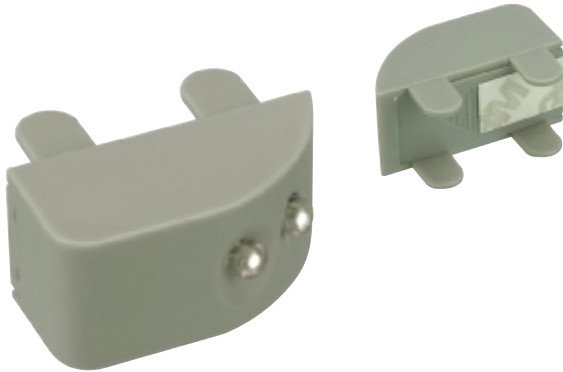
colour: silver • power supply: 3 x 1.5V AAA batteries LR03C (not incl.) • dimensions: Ø 70 x 22mm • weight: 25g



CCL02X3



5 410329 397777



AUTOMATIC CABINET LIGHT - HINGE MOUNTING



FR ÉCLAIRAGE AUTOMATIQUE POUR ARMOIRE + MONTAGE SUR CHARNIÈRES

NL AUTOMATISCHE KASTVERLICHTING - SCHARNIERBEVESTIGING

DE AUTOMATISCHE LED-SCHRANKBELEUCHTUNG - BEFESTIGUNG AN SCHARNIER

ES ILUMINACIÓN LED AUTOMÁTICA PARA ARMARIO - MONTAJE EN BISAGRA

Suitable to mount on cabinet hinges. The light turns on when opening the cabinet.

light activation: vibration switch • delay time: 12 seconds

light source: 2 x 5 mm LED • colour: cold white • material: ABS plastic • colour temperature: 5500 K • power supply: 3 x LR44 battery (incl.) • dimensions: 40 x 20 x 28 mm • weight: 15 g



LEDA52CW



5 410329 585846



LED PANEL LIGHT 60 x 60 cm - RGB - 70 W



FR PANNEAU LED 60 x 60 cm - RVB - 70 W

NL LED-PANEEL 60 x 60 cm - RGB - 70 W

DE LED-LEUCHTE - PANEL 60 x 60 cm - RGB - 70 W

ES LUMINARIA LED - PANEL 60 x 60 cm - RGB - 70 W

LED ceiling panel light • easy installation: for system ceiling • high brightness LEDs: 192 pieces SMD 5050 • LED driver: not included • housing: aluminium • diffuser: frosted PMMA

electrical data: ◦ power LED module: 70 W ◦ nominal voltage LED module: 24 VDC (constant voltage) • light technical data: ◦ colour: RGB ◦ wavelength: red: 630 nm, green: 520 nm, blue: 450 nm ◦ beam angle: 120 ° ◦ luminous flux: red: 205 lm, green: 655 lm, blue: 120 lm • dimensions & weight: ◦ dimensions LED module: 595 x 595 x 14.5 mm ◦ weight: 3900 g



LEDA60RGB



5 410329 595548



LED PANEL LIGHT 60 x 60 cm - COLD WHITE - 41 W



FR PANNEAU LED - 60 x 60 cm - BLANC FROID - 41 W
NL LED-PANEEL - 60 x 60 cm - KOUDWIT - 41 W
DE LED-LEUCHTE - PANEL 60 x 60 cm - KALTWEIß - 41 W
ES LUMINARIA LED - PANEL 60 x 60 cm - BLANCO FRÍO - 41 W

LED ceiling panel light • easy installation: for system ceiling • high brightness LEDs: 2 sides
- 192 pieces SMD 3014 • LED driver: high quality constant current LED driver • optional
cable set for floating installation: LEDA61C • housing: aluminium • diffuser: frosted PS
(polystyrene)

electrical data: ◦ power LED module: 38 W ◦ total nominal power: 41 W ◦ nominal voltage
driver: 220-240 VAC ◦ nominal current LED module: 950 mA constant current (incl.) ◦ power
factor: > 0.9 ◦ energy consumption kWh/1000h: 41 • light technical data: ◦ colour: cold white
◦ colour temperature: 6500K ◦ beam angle: 120° ◦ luminous flux: 3000 lm ◦ colour rendering
index: 82 ◦ starting time: < 0.5 s ◦ warm-up time (60 %): < 1 s • lifespan: ◦ nominal life time:
30 000 h ◦ number of switching cycles: 15 000 • dimensions & weight: ◦ dimensions LED
module: 595 x 595 x 9.5 mm ◦ weight: 3000 g



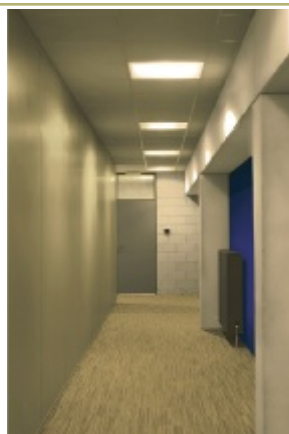
LED PANEL LIGHT 60 x 60 cm - NEUTRAL WHITE - 41 W



FR PANNEAU LED - 60 x 60 cm - BLANC NEUTRE - 41 W
NL LED-PANEEL - 60 x 60 cm - NEUTRAALWIT - 41 W
DE LED-LEUCHTE - PANEL 60 x 60 cm - NEUTRALWEIß 41 W
ES LUMINARIA LED - PANEL 60 x 60 cm - BLANCO NEUTRO 41 W

LED ceiling panel light • easy installation: for system ceiling • high brightness LEDs: 2 sides
- 192 pieces SMD 3014 • LED driver: high quality constant current LED driver • housing:
aluminium • diffuser: frosted PS (polystyrene)

electrical data: ◦ power LED module: 38 W ◦ total nominal power: 41 W ◦ nominal voltage
driver: 220-240 VAC ◦ nominal current LED module: 950 mA constant current (incl.) ◦ power
factor: > 0.9 ◦ energy consumption kWh/1000h: 41 • light technical data: ◦ colour: neutral
white ◦ colour temperature: 4000K ◦ beam angle: 120° ◦ luminous flux: 3000 lm ◦ colour
rendering index: 82 ◦ starting time: < 0.5 s ◦ warm-up time (60 %): < 1 s • lifespan:
◦ nominal life time: 30 000 h ◦ number of switching cycles: 15 000 • dimensions & weight:
◦ dimensions LED module: 595 x 595 x 9.5 mm ◦ weight: 3000 g



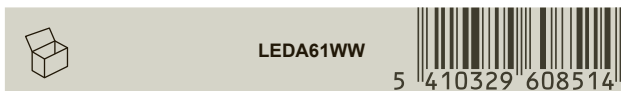
LED PANEL LIGHT 60 x 60 cm - WARM WHITE - 41 W



FR PANNEAU LED - 60 x 60 cm - BLANC CHAUD - 41 W
NL LED-PANEEL - 60 x 60 cm - WARMWIT - 41 W
DE LED-LEUCHTE - PANEL 60 x 60 cm - WARMWEIß 41 W
ES LUMINARIA LED - PANEL 60 x 60 cm - BLANCO CÁLIDO 41 W

LED ceiling panel light • easy installation: for system ceiling • high brightness LEDs: 2 sides
- 192 pieces SMD 3014 • LED driver: high quality constant current LED driver • housing:
aluminium • diffuser: frosted PS (polystyrene)

electrical data: ◦ power LED module: 38 W ◦ total nominal power: 41 W ◦ nominal voltage
driver: 220-240 VAC ◦ nominal current LED module: 950 mA constant current (incl.) ◦ power
factor: > 0.9 ◦ energy consumption kWh/1000h: 41 • light technical data: ◦ colour: warm
white ◦ colour temperature: 3000K ◦ beam angle: 120° ◦ luminous flux: 3000 lm ◦ colour
rendering index: 82 ◦ starting time: < 0.5 s ◦ warm-up time (60 %): < 1 s • lifespan:
◦ nominal life time: 30 000 h ◦ number of switching cycles: 15 000 • dimensions & weight:
◦ dimensions LED module: 595 x 595 x 9.5 mm ◦ weight: 3000 g





INSTALLATION FRAME FOR LEDA61CW, LEDA61NW AND LEDA61WW

FR: CHÂSSIS D'INSTALLATION POUR LEDA61CW, LEDA61NW ET LEDA61WW
 NL: INSTALLATIEFRAME VOOR LEDA61CW, LEDA61NW EN LEDA61WW
 DE: MONTAGERAHMEN FÜR LEDA61CW, LEDA61NW UND LEDA61WW
 ES: MARCO PARA LA INSTALACIÓN DEL LEDA61CW, LEDA61NW Y LEDA61WW

aluminium frame for surface mount • for: ○ LEDA61CW ○ LEDA61NW ○ LEDA61WW

dimensions: 600 x 12 x 49 mm

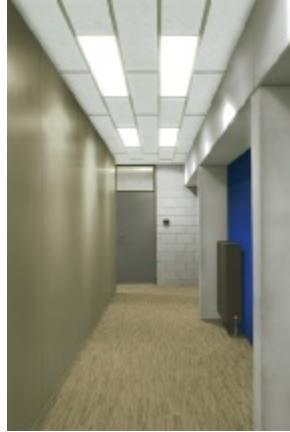
NEW



LEDA61AF



5 410329 611712



LED PANEL LIGHT 30 x 120 cm - NEUTRAL WHITE - 41 W



FR: PANNEAU LED - 30 x 120 cm - BLANC NEUTRE - 41 W
 NL: LED-PANEEL - 30 x 120 cm - NEUTRAALWIT - 41 W
 DE: LED-LEUCHTE - PANEL 30 x 120 cm - NEUTRALWEIß 41 W
 ES: LUMINARIA LED - PANEL 30 x 120 cm - BLANCO NEUTRO 41 W

LED ceiling panel light • easy installation: for system ceiling • high brightness LEDs: 1 side - 216 pieces SMD 3014 • LED driver: high quality constant current LED driver • housing: aluminium • diffuser: frosted PS (polystyrene)

electrical data: ○ power LED module: 35 W ○ total nominal power: 39 W ○ nominal voltage driver: 220-240 VAC ○ nominal current LED module: 950 mA constant current (incl.) ○ power factor: > 0.9 ○ energy consumption kWh/1000h: 39 • light technical data: ○ colour: neutral white ○ colour temperature: 4000K ○ beam angle: 120° ○ luminous flux: 3000 lm ○ colour rendering index: 82 ○ starting time: < 0.5 s ○ warm-up time (60 %): < 1 s • lifespan: ○ nominal life time: 30 000 h ○ number of switching cycles: 15 000 • dimensions & weight: ○ dimensions LED module: 295 x 1195 x 9.5 mm ○ weight: 2900 g



LEDA62NW



5 410329 608439



INSTALLATION FRAME FOR LEDA62NW

FR: CHÂSSIS D'INSTALLATION POUR LEDA62NW
 NL: INSTALLATIEFRAME VOOR LEDA62NW
 DE: RAHMEN FÜR LEDA62NW
 ES: MARCO PARA LEDA62NW

aluminium frame for surface mount • for: ○ LEDA62NW

dimensions: 1200 x 12 x 49 mm

NEW



LEDA62AF



5 410329 611828



CABLE SET FOR LED PANELS

FR: JEU DE CÂBLES POUR PANNEAUX LED
 NL: KABELSET VOOR LED-PANELEN
 DE: KABELSATZ FÜR LED-PANEELE
 ES: JUEGO DE CABLES PARA PANELES LED

cable set for floating installation • cable length: adjustable • for: ○ LEDA61CW ○ LEDA61NW ○ LEDA61WW ○ LEDA62NW

cables: 4 pieces • length: ± 100 cm



LEDA61C



5 410329 608545



LED TUBE CEILING LIGHT - 10 W - NEUTRAL WHITE



FR: TUBE LED AVEC LUMINAIRE DE PLAFOND - 10 W - BLANC NEUTRE
 NL: LED-BUISLAMP MET ARMATUUR - 10 W - NEUTRAALWIT
 DE: LED-DECKENLEUCHTE - RÖHRE - 10 W - NEUTRALWEIß
 ES: PLAFÓN CON LEDs - TUBO - 10 W - COLOR BLANCO NEUTRO

LED ceiling light • easy installation • surface mounting • housing colour: grey

electrical data: ○ power LED module: 48 pieces 2835 LEDs ○ total nominal power: < 10 W ○ nominal voltage driver: 230 VAC ○ power factor: > 0.85 ○ energy consumption kWh/1000 h: 10 • light technical data: ○ colour: neutral white ○ colour temperature: 4000 K ○ beam angle: 125° ○ luminous intensity: 220 cd ○ luminous flux: 800 lm ○ colour rendering index: > 80 ○ starting time: < 0.5 s ○ warm-up time (60 %): < 1 s • lifespan: ○ nominal life time: 30.000 h ○ number of switching cycles: 15.000 • dimensions & weight: ○ dimensions LED module: 615 x 29 x 45 mm ○ weight: 250 g



LEDA75NW



5 410329 601331



LED TUBE CEILING LIGHT - 20 W - NEUTRAL WHITE



FR TUBE LED AVEC LUMINAIRE DE PLAFOND - 20 W - BLANC NEUTRE
NL LED-BUISLAMP MET ARMATUUR - 20 W - NEUTRAALWIT
DE LED-DECKENLAMPE - RÖHRE - 20 W - NEUTRALWEIS
ES PLAFÓN CON LEDS - TUBO - 20 W - COLOR BLANCO NEUTRO

LED ceiling light • easy installation • surface mounting • housing colour: grey

electrical data: ◦ power LED module: 96 pieces 2835 LEDs ◦ total nominal power: < 20 W
◦ nominal voltage driver: 230 VAC ◦ power factor: > 0.85 ◦ energy consumption kWh/1000 h: 20
• light technical data: ◦ colour: neutral white ◦ colour temperature: 4000 K ◦ beam angle: 125°
◦ luminous intensity: 420 cd ◦ luminous flux: 1600 lm ◦ colour rendering index: >80
◦ starting time: < 0.5 s ◦ warm-up time (60 %): < 1 s • lifespan: ◦ nominal life time: 30.000 h
◦ number of switching cycles: 15.000 • dimensions & weight: ◦ dimensions LED module: 1233 x 29 x 45 mm
◦ weight: 400 g



LEDA76NW



5 410329 601355



ROUND PENDANT LED LIGHT - NEUTRAL WHITE



FR SUSPENSION RONDE À LED - BLANC NEUTRE
NL RONDE LED-HANGLAMP - NEUTRAALWIT
DE LED-HÄNGELEUCHTE - RUND - NEUTRALWEIS
ES LÁMPARA DE TECHO - REDONDA - COLOR BLANCO NEUTRO

LED pendant light series • ultra-thin design concept • housing: aluminium • housing colour: white

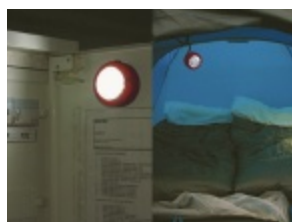
electrical data: ◦ power LED module: 21 W ◦ total nominal power: < 26 W ◦ nominal voltage driver: 230 VAC
◦ nominal voltage LED module: 1 A constant current / 20-30 VDC max. (incl.) ◦ power factor: 0.92
◦ energy consumption kWh/1000h: 26 • light technical data: ◦ colour: neutral white ◦ colour temperature: 3900 K (± 100 K)
◦ beam angle: N.A. ◦ luminous flux: 1600 lm ◦ colour rendering index: > 80 ◦ starting time: < 0.5 s ◦ warm-up time (60 %): < 1 s
• lifespan: ◦ nominal life time: 30 000 h ◦ number of switching cycles: 15 000 • dimensions & weight:
◦ dimensions LED module: Ø 600 x 70 mm ◦ cable length: ± 115 cm ◦ weight: 3800 g



LEDAD1NW



5 410329 582173



MAGNETIC 24 LEDS HANDY LAMP WITH HOOK



FR LAMPE DE CAMPING MAGNÉTIQUE - 24 LED
NL MAGNETISCHE WERK LEDLAMP (KAMPEERLAMP) - 24 LEDS
DE MAGNETISCHE LED-LEUCHTE MIT HAKEN - 24 LEDS
ES LÁMPARA LED MAGNÉTICA CON GANCHO DE SUSPENSIÓN - 24 LEDS

suitable for: ◦ car, truck, boat, camping ◦ emergency roadside repairs • strong magnet on reverse for attaching to metal surfaces • swivel hook adjusts to different angles • shock resistant • with on/off switch

housing: ABS with soft finish • luminous intensity: 12,000mcd • LEDs: ◦ number: 24 ◦ lifetime: 50,000hrs • power supply: 3 x 1.5V AAA Batteries (not incl.) • battery lifetime: 10-15h • dimensions: ø70 x 35mm • weight: ±70g (without batteries)



EWL16



5 410329 414191



LED SPOTLIGHT - 24 LEDS - AAA BATTERY



FR SPOT LED - 24 LED - PILE AAA
NL LED-ZAKLAMP - 24 LEDS - AAA BATTERIJ
DE LED-HANDSCHEINWERFER - 24 LEDS - AAA-BATTERIE
ES PROYECTOR LED - 24 LEDS - PILAAAA

with hang hook • magnetic

number of LEDs: 24 • AAA-battery:



PM6630



5 411244 663008



PIR LED LAMP

PEREL®

- FR ÉCLAIRAGE LED À CAPTEUR PIR
- NL LEDLAMP MET PIR-SENSOR
- DE LED-LAMPE MIT PIR-SENSOR
- ES LÁMPARA LED CON SENSOR PIR

switches on and off through a PIR (passive infrared) motion sensor which detects when an infrared source with a certain temperature (e.g. a person) passes in front of an infrared source with a different temperature (e.g. a wall) ● can be wall mounted or fixed to a metal object thanks to its magnetic base ● weather resistant ● on/off switch, adjustable lighting time (20s, 60s, 90s), sensitivity and LED brightness ● low battery LED indicator

intensity (per LED): 11000-13000mcd ● power supply: 4 x AAA batteries (not incl.)
● dimensions: Ø 8.5 x 40mm ● weight: 72g



CLL404



5 410329 413194



SAFETY FLASHING WARNING LED LIGHT - MAGNETIC BASE

PEREL®

- FR LAMPE LED DE SECOURS À SOCLE AIMANTÉ
- NL LED-FLITSLICHT MET MAGNETISCHE VOET
- DE LED-BLINKLEUCHE MIT MAGNETISCHEM FUß
- ES LUZ DE SEGURIDAD INTERMITENTE CON LEDS Y BASE MAGNÉTICA

compact and highly visible ● with strong magnet to attach to vehicle (magnet doesn't touch surface) ● can be placed on the ground or road ● casing made of super high strength plastic with a flexible TPR plastic shield ● completely waterproof ● 9-in-1: 8 flash patterns + an emergency flashlight mode ● strong and solid

LEDs: 15 x red ● flash patterns: 9 (see website for animated demo) ● visibility: (depending on battery condition) ○ day: up to 100 m ○ night: up to 300 m ● operating temperature: -20 to +40 °C ● power supply: 1 x 3 V CR123AC lithium battery (incl.) ● dimensions: 112 x 102 x 35 mm ● weight: 192 g



EFL27



5 410329 566920



LED TENT LIGHT WITH TIMER

PEREL®

- FR ÉCLAIRAGE DE TENTE AVEC MINUTEUR
- NL LED TENTVERLICHTING MET TIMER
- DE LED-ZELTBELEUCHTUNG MIT TIMER
- ES ILUMINACIÓN CON LEDS Y TEMPORIZADOR PARA TIENDA DE CAMPAÑA

adjustable brightness ● with timer function: 15-30-60min ● 3 LED night light ● swivel hook for suspension ● shock resistant ● with on/off switch

housing: ABS with soft finish ● number of LEDs: 18 + 3 ● LED lifetime: 50,000 hrs ● max. luminous intensity: 12,000mcd ● power supply: 4 x 1.5V AAA Batteries (not incl.) ● battery lifetime: 10~15h ● dimensions: 12 x 3cm ● weight: ±180g (without batteries)



EFLC3



5 410329 441890



LAMP WITH MAGNIFYING GLASS 5 DIOPTRE- 22 W WHITE

PEREL®

- FR LAMPE-LOUPE 5 DIOPTRIES- 22 W - BLANC
- NL BUREAULAMP MET VERGROOTGLAS 5 DIOPTRIE - 22 W WIT
- DE LUPENLEUCHE 5 DIOPTRIEN- 22 W - WEIß
- ES LÁMPARA CON LUPA 5 DIOPTRIAS- 22 W - COLOR BLANCO

This magnifying lamp is designed as an aid for all kinds of precision applications from health care to precision engineering. It's also ideal for home applications. It comes with a 5-dioptre lens (magnification 2.25 x). A well-balanced, universally jointed arm makes for maximum adjustment. Light is provided by a circular fluorescent tube of 22W that encircles the glass. Mount the device on a table with the clamp.

dimensions: ○ arm length: 105cm ○ width: 24cm ○ height: 6cm ● colour: white ● power supply: 230Vac ● spare lamp: ESL08

► May not be sold in Germany



WTL2N



5 410329 395667



DESK WORKING LAMP - 3 x 14 W - WHITE

PEREL®

FR LAMPE DE BUREAU - 3 x 14 W - BLANC
NL BUREAULAMP - 3 x 14 W - WIT
DE SCHREIBTISCHLAMPE - 3 x 14 W - WEISS
ES LÁMPARA DE ESCRITORIO - 3 x 14 W - COLOR BLANCO

light source: 3 x T5 14 W energy-saving compact fluorescent lamp • comes with electronic ballast • on/off switch • table standard

dimensions: ◦ arm length: 105 cm ◦ width: 60 cm ◦ height: 11 cm • colour: white • power supply: 230 Vac • spare lamp: WTL6/SP1 • spare cover: VTLAMP6/SP1



WTL6



5 410329 399726



LED BOOK LIGHT

PEREL®

FR LAMPE DE LECTURE À LED
NL LED-LEESLAMP
DE LED-LESELAMPE
ES LÁMPARA DE LECTURA CON LED

compact design • handy unfolding mechanism • bright light output and low consumption

power supply: 3 x AG13 button cell V13GAC (incl.) • dimensions: 120 x 35 x 20mm • weight: 40g



EFL25



5 410329 557041



LED LIGHT - CORDLESS - RECHARGEABLE - FOLDABLE

PEREL®

FR LAMPE LED - SANS FIL - RECHARGEABLE - PLIABLE
NL LEDLAMP - DRAADLOOS - HERLAADBAAR - OPVOUWBAAR
DE LED-TISCHLEUCHTE - DRAHTLOS - WIEDERAUFLADBAR - FALTBAR
ES LÁMPARA LED - INALÁMBRICA - RECARGABLE - PLEGABLE

cold white light • dimmable LEDs • LCD display: ◦ calendar: time, month, day ◦ temperature: Celsius/Fahrenheit • alarm clock with snooze function • on/off key • adjustable brightness (2 levels) • built-in rechargeable battery with LED indicator • two charging modes: ◦ via USB cable: included ◦ DC adaptor: optional • battery autonomy: up to ± 2.5 hours when fully charged • 3 foldable parts, 180° adjustable • use: handheld, standing on a table, or hanging from a wall (with hanging clip)

materials: ABS + PS + aluminium alloy • number of LEDs: 18 • power consumption: 1.5 W • colour temperature: 6600 K (± 10 %) • lamp lifetime: > 35 000 h • luminous flux: 180 lm • colour rendering index: > 70 Ra • lamp power supply: 5 Vdc / 500 mA (via USB) • rechargeable lithium battery: 3.7 V / 1000 mA (incl.) • LCD power supply: 3 V CR2025 battery (incl.) • dimensions: 185 x 42 x 28 mm / 7.3 x 1.7 x 1.1" • weight: 260 g / 0.57 lb.



EFL29



5 410329 585754



RECHARGEABLE SOCKET NIGHT LIGHT

PEREL®

FR VEILLEUSE RECHARGEABLE
NL OPLAADBAAR NACHTLAMPJE
DE WIEDERAUFLADBARE NACHTLICHT
ES LAMPARILLA DE NOCHE RECARGABLE

LED night- and flashlight with motion sensor

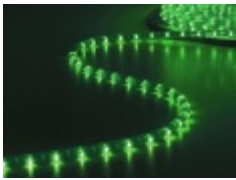
power source (charger): 220-240 Vac 50Hz / max 1.6 W • battery type: rechargeable Li-ion 3.7V 500 mAh (not replaceable) • LED type: ◦ flashlight: 2 pcs 0.5 W LED ◦ night light: 16 pcs LED / 0.7 W • luminous flux: ◦ flashlight: 40 lm ◦ night light: 35 lm • autonomy: ◦ flashlight: > 1.5 hours ◦ night light: > 2 hours • sensor range: 2 - 3 m • charging time: 8-10 h • dimensions: 130 x 63 mm • weight: 198 g



EFL36



5 410329 590970



ROPE LIGHT - 45 m - GREEN

FR FLEXIBLE LUMINEUX - 45 m - VERT
 NL LICHTSLANG - 45 m - GROEN
 DE LICHTSCHLAUCH - GRÜN - 45 m
 ES MANGUERA LUMINOSA - COLOR VERDE - 45 m

comes with pre-assembled power cable and end cap (RLEC) • can be cut each 100 cm • optional accessories: ◦ inline connector: RLIC (5 pcs) ◦ end cap: RLEC (5 pcs) ◦ T-connector: RLTC (1 pc) ◦ L-connector: RLLC (1 pc) ◦ waterproof power cable: RLOPC (1 pc) ◦ glue: RLGL ◦ mounting clips: RLMC • IP44

colour: green • length: 45 m • power supply: 230 VAC • rating: 16.5 W per metre • diameter: 13 mm • bulb spacing: 36 bulbs per metre, placed at 2.8 cm intervals • rated bulb life: 20 000 hours • auto-fuse bulbs



► May not be sold in France



RL45G



5 410329 481834



ROPE LIGHT - 45 m - PINK

FR FLEXIBLE LUMINEUX - 45 m - ROSE
 NL LICHTSLANG - 45 m - ROZE
 DE LICHTSCHLAUCH - 45 m ROSA
 ES MANGUERA LUMINOSA - 45 m - ROSA

comes with pre-assembled power cable and end cap (RLEC) • can be cut each 100 cm • optional accessories: ◦ inline connector: RLIC (5 pcs) ◦ end cap: RLEC (5 pcs) ◦ T-connector: RLTC (1 pc) ◦ L-connector: RLLC (1 pc) ◦ waterproof power cable: RLOPC (1 pc) ◦ glue: RLGL ◦ mounting clips: RLMC • IP44

colour: pink • length: 45 m • power supply: 230 VAC • rating: 16.5 W per metre • diameter: 13 mm • bulb spacing: 36 bulbs per metre, placed at 2.8 cm intervals • rated bulb life: 20 000 hours • auto-fuse bulbs



► May not be sold in France



RL45P



5 410329 481872



ROPE LIGHT - 45 m - RED

FR FLEXIBLE LUMINEUX - 45 m - ROUGE
 NL LICHTSLANG - 45 m - ROOD
 DE LICHTSCHLAUCH - ROT - 45 m
 ES MANGUERA LUMINOSA - COLOR ROJO - 45 m

comes with pre-assembled power cable and end cap (RLEC) • can be cut each 100 cm • optional accessories: ◦ inline connector: RLIC (5 pcs) ◦ end cap: RLEC (5 pcs) ◦ T-connector: RLTC (1 pc) ◦ L-connector: RLLC (1 pc) ◦ waterproof power cable: RLOPC (1 pc) ◦ glue: RLGL ◦ mounting clips: RLMC • IP44

colour: red • length: 45 m • power supply: 230 VAC • rating: 16.5 W per metre • diameter: 13 mm • bulb spacing: 36 bulbs per metre, placed at 2.8 cm intervals • rated bulb life: 20 000 hours • auto-fuse bulbs



► May not be sold in France



RL45R



5 410329 481841



ROPE LIGHT - 45 m - YELLOW

FR FLEXIBLE LUMINEUX - 45 m - JAUNE
 NL LICHTSLANG - 45 m - GEEL
 DE LICHTSCHLAUCH - GELB - 45 m
 ES MANGUERA LUMINOSA - COLOR AMARILLO - 45 m

comes with pre-assembled power cable and end cap (RLEC) • can be cut each 100 cm • optional accessories: ◦ inline connector: RLIC (5 pcs) ◦ end cap: RLEC (5 pcs) ◦ T-connector: RLTC (1 pc) ◦ L-connector: RLLC (1 pc) ◦ waterproof power cable: RLOPC (1 pc) ◦ glue: RLGL ◦ mounting clips: RLMC • IP44

colour: yellow • length: 45 m • power supply: 230 VAC • rating: 16.5 W per metre • diameter: 13 mm • bulb spacing: 36 bulbs per metre, placed at 2.8 cm intervals • rated bulb life: 20 000 hours • auto-fuse bulbs



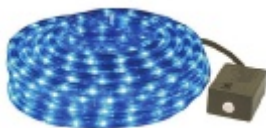
► May not be sold in France



RL45Y



5 410329 481889



ROPE LIGHT - 2 CHANNELS - 8 m - BLUE + WITH WATERPROOFED PLUG + CONTROL BOX

FR FLEXIBLE LUMINEUX - 2 CANAUX - 8 m - BLEU + AVEC FICHE ETANCHE + BOITE DE CONTROLE
 NL LICHTSLANG - 2 KANALEN - BLAUW + WATERDICHTE AANSLUITING + CONTROLEBOX
 DE LICHTSCHLAUCH - 2 KANÄLE - 8 m - BLAU + WASSERDICHTE BUCHSE + STEUERGERÄT
 ES MANGUERA LUMINOSA - 2 CANALES - 8 m - AZUL + CONECTOR IMPERMEABLE + CONTROLADOR

colour: blue • length: 8m • power supply: 230Vac • rating: 16.5W per meter • diameter: Ø13mm • bulb spacing: 36 bulbs per meter, placed at 2.8cm intervals • bulb life: 8000 hours



VDLRL28B



5 410329 213695

ROPE LIGHT - 2 CHANNELS - 8 m - YELLOW + WITH WATERPROOFED PLUG + CONTROL BOX

FR FLEXIBLE LUMINEUX - 2 CANAUX - 8 m - JAUNE + AVEC FICHE ETANCHE + BOITE DE CONTROLE
 NL LICHTSLANG - 2 KANALEN - GEEL + WATERDICHTE AANSLUITING + CONTROLEBOX
 DE LICHTSCHLAUCH - 2 KANÄLE - 8 m - GELB + WASSERDICHTE BUCHSE + STEUERGERÄT
 ES MANGUERA LUMINOSA - 2 CANALES - 8 m - AMARILLA + CONECTOR IMPERMEABLE + CONTROLADOR

colour: yellow • length: 8m • power supply: 230Vac • rating: 16.5W per meter • diameter: Ø13mm • bulb spacing: 36 bulbs per meter, placed at 2.8cm intervals • bulb life: 8000 hours



VDLRL28Y



5 410329 213725



GREEN LED ROPE LIGHT - 45 m

FR FLEXIBLE LUMINEUX À LEDS - VERT - 45 m
NL LED-LICHTSLANG - GROEN - 45 m
DE LED-LICHTSCHLANGE - GRÜN - 45 m
ES MANGUERA LUMINOSA CON LEDS - COLOR VERDE - 45 m



comes with pre-assembled power cable and end cap (RLEC) ● can be cut every 100 cm ● optional accessories: ○ inline connector: RLIC (5 pcs) ○ end cap: RLEC (5 pcs) ○ T-connector: RLTC (1 pc) ○ L-connector: RLCC (1 pc) ○ waterproof power cable: RLLOPC(1 pc) ○ glue: RLGL ○ mounting clips: RLMC ● IP44

► May not be sold in France



RLL45G



5 410329 476595

colour: green ● wavelength: 520 - 525 nm ● power supply: 230 VAC 50 Hz ● power consumption: ○ 2.2 W/m ○ 99 W/roll ● lifetime: 50 000 h ● LEDs/ metre: 36 ● length: 45 m ● Ø: 13 mm



GREEN LED ROPELIGHT - 45 m

FR FLEXIBLE LUMINEUX VERT A LEDS - 45 m
NL GROENE LED LICHTSLANG - 45 m
DE LICHTSCHLANGE - GRÜN - 45 m
ES MANGUERA LUMINOSA CON LEDS - COLOR VERDE - 45 m



can be cut in specific intervals ● optional waterproof power cable: VDRLROPCL



RLL145G



5 410329 413866

colour: green ● colour temperature: ● wavelength: 520nm ● length: 45m ● power consumption: ○ per meter: 2.16W ○ total: 97W ● Ø: 13mm ● LEDs/ metre: 37 ● lifetime: 25000h ● power supply: 230VAC / 50Hz



PINK LED ROPE LIGHT - 45 m

FR FLEXIBLE LUMINEUX À LEDS - ROSE - 45 m
NL LED-LICHTSLANG - ROZE - 45 m
DE LED-LICHTSCHLANGE - ROSA - 45 m
ES MANGUERA LUMINOSA CON LEDS - COLOR ROSA - 45 m



comes with pre-assembled power cable and end cap (RLEC) ● can be cut every 100 cm ● optional accessories: ○ inline connector: RLIC (5 pcs) ○ end cap: RLEC (5 pcs) ○ T-connector: RLTC (1 pc) ○ L-connector: RLCC (1 pc) ○ waterproof power cable: RLLOPC(1 pc) ○ glue: RLGL ○ mounting clips: RLMC ● IP44

► May not be sold in France



RLL45P



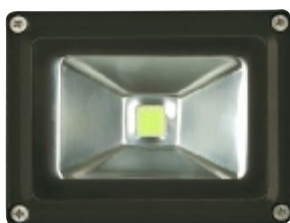
5 410329 476601

colour: pink ● wavelength: - ● power supply: 230 VAC 50 Hz ● power consumption: ○ 2.2 W/m ○ 99 W/roll ● lifetime: 50 000 h ● LEDs/ metre: 36 ● length: 45 m ● Ø: 13 mm



FLOODLIGHTS & FIXED LIGHTING

PROJECTEURS & ÉCLAIRAGE FIXE
SCHIJNWERPERS & VASTE VERLICHTING
STRAHLER & FESTE BELEUCHTUNG
PROYECTORES & ILUMINACIÓN FIJA



OUTDOOR FLOODLIGHT - 10 W EPISTAR CHIP - 6500 K

PEREL®

FR PROJECTEUR LED D'EXTÉRIEUR - PUCE EPISTAR 10 W - 6500 K
NL LED-SCHIJNWERPER VOOR BUITENSHUIS - 10 W EPISTAR CHIP - 6500 K
DE LED-STRAHLER FÜR DEN AUßENBEREICH - 10 W EPISTAR CHIP - 6500 K
ES PROYECTOR LED PARA EXTERIORES - 10 W EPISTAR CHIP - 6500 K

floodlight for commercial or residential use ● die-cast aluminium housing with tempered glass ● ribbed for maximum heat dissipation ● with adjustable bracket ● suited for outdoor use (IP65) ● with 30 cm unterminated cable

body colour: black ● electrical data: ○ power LED module: 1 * 10 W COB Epistar ○ total nominal power: 10.5 W ○ nominal voltage driver: 230 VAC ○ nominal voltage LED module: 30-36 V ○ power factor: 0.9 ○ energy consumption kWh/1000 h: 10,5 ○ cable: H05RN-F 3G1.0 - 30 cm ● light technical data: ○ colour: cold white ○ colour temperature: 6500 K ○ beam angle: 120° ○ luminous flux: 600 lm ○ colour rendering index: 70 ○ starting time: < 0.5 s ○ warm-up time (60 %): < 1 s ● lifespan: ○ nominal life time: 30 000 h ○ number of switching cycles: 15 000 ● dimensions & weight: ○ dimensions (W x H x D): ○ spot: 115 x 85 x 75 mm = incl. bracket: - ○ cable length: 30 cm ○ weight: 400g ±20g



LEDA3001CW-B



5 410329 591977



OUTDOOR LED FLOODLIGHT WITH PIR SENSOR - 10 W EPISTAR CHIP - 6500 K

PEREL®

FR: PROJECTEUR LED D'EXTÉRIEUR AVEC CAPTEUR PIR - PUCE EPISTAR 10 W - 6500 K
 NL: LED-SCHIJNWERPER VOOR BUITENSHUIS MET PIR-SENSOR - 10 W EPISTAR CHIP - 6500 K
 DE: LED-STRAHLER MIT PIR-BEWEGUNGSMELDER FÜR DEN AUßENBEREICH - 10 W EPISTAR CHIP - 6500 K
 ES: PROYECTOR LED CON SENSOR PIR PARA EXTERIORES - 10 W EPISTAR CHIP - 6500 K

floodlight for commercial or residential use • die-cast aluminium housing with tempered glass
 • ribbed for maximum heat dissipation • with adjustable bracket • with 120° pyroelectric infrared (PIR) motion sensor • suited for outdoor use (floodlight - IP65, PIR sensor - IP44)
 • with 30 cm unterminated cable

body colour: black • electrical data: ◦ power LED module: 1 * 10 W COB Epistar ◦ total nominal power: 12.5 W ◦ nominal voltage driver: 230 VAC ◦ nominal voltage LED module: 30-36 V ◦ power factor: 0.6 ◦ energy consumption kWh/1000 h: 12,5 ◦ cable: H05RN-F 3G1.0 - 30 cm • light technical data: ◦ colour: cold white ◦ colour temperature: 6500 K ◦ beam angle: 120° ◦ luminous flux: 600 lm ◦ colour rendering index: 70 ◦ starting time: < 0.5 s ◦ warm-up time (60 %): < 1 s • lifespan: ◦ nominal life time: 30 000 h ◦ number of switching cycles: 15 000 • dimensions & weight: ◦ dimensions (W x H x D): ◦ spot: 115 x 85 x 75 mm ◦ incl. bracket: - ◦ cable length: 30 cm ◦ weight: 500g ±20g



LEDA3001CW-BP



5 410329 601690



OUTDOOR FLOODLIGHT - 10 W EPISTAR CHIP - 6500 K

PEREL®

FR: PROJECTEUR LED D'EXTÉRIEUR - PUCE EPISTAR 10 W - 6500 K
 NL: LED-SCHIJNWERPER VOOR BUITENSHUIS - 10 W EPISTAR CHIP - 6500 K
 DE: LED-STRAHLER FÜR DEN AUßENBEREICH - 10 W EPISTAR CHIP - 6500 K
 ES: PROYECTOR LED PARA EXTERIORES - 10 W EPISTAR CHIP - 6500 K

floodlight for commercial or residential use • die-cast aluminium housing with tempered glass
 • ribbed for maximum heat dissipation • with adjustable bracket • suited for outdoor use (IP65) • with 30 cm unterminated cable

body colour: grey • electrical data: ◦ power LED module: 1 * 10 W COB Epistar ◦ total nominal power: 10.5 W ◦ nominal voltage driver: 230 VAC ◦ nominal voltage LED module: 30-36 V ◦ power factor: 0.9 ◦ energy consumption kWh/1000 h: 10,5 ◦ cable: H05RN-F 3G1.0 - 30 cm • light technical data: ◦ colour: cold white ◦ colour temperature: 6500 K ◦ beam angle: 120° ◦ luminous flux: 600 lm ◦ colour rendering index: 70 ◦ starting time: < 0.5 s ◦ warm-up time (60 %): < 1 s • lifespan: ◦ nominal life time: 30 000 h ◦ number of switching cycles: 15 000 • dimensions & weight: ◦ dimensions (W x H x D): ◦ spot: 115 x 85 x 75 mm ◦ incl. bracket: - ◦ cable length: 30 cm ◦ weight: 400g ±20g



LEDA3001CW-G



5 410329 591984



OUTDOOR LED FLOODLIGHT WITH PIR SENSOR - 10 W EPISTAR CHIP - 6500 K

PEREL®

FR: PROJECTEUR LED D'EXTÉRIEUR AVEC CAPTEUR PIR - PUCE EPISTAR 10 W - 6500 K
 NL: LED-SCHIJNWERPER VOOR BUITENSHUIS MET PIR-SENSOR - 10 W EPISTAR CHIP - 6500 K
 DE: LED-STRAHLER MIT PIR-BEWEGUNGSMELDER FÜR DEN AUßENBEREICH - 10 W EPISTAR CHIP - 6500 K
 ES: PROYECTOR LED CON SENSOR PIR PARA EXTERIORES - 10 W EPISTAR CHIP - 6500 K

floodlight for commercial or residential use • die-cast aluminium housing with tempered glass
 • ribbed for maximum heat dissipation • with adjustable bracket • with 120° pyroelectric infrared (PIR) motion sensor • suited for outdoor use (floodlight - IP65, PIR sensor - IP44)
 • with 30 cm unterminated cable

body colour: grey • electrical data: ◦ power LED module: 1 * 10 W COB Epistar ◦ total nominal power: 12.5 W ◦ nominal voltage driver: 230 VAC ◦ nominal voltage LED module: 30-36 V ◦ power factor: 0.6 ◦ energy consumption kWh/1000 h: 12,5 ◦ cable: H05RN-F 3G1.0 - 30 cm • light technical data: ◦ colour: cold white ◦ colour temperature: 6500 K ◦ beam angle: 120° ◦ luminous flux: 600 lm ◦ colour rendering index: 70 ◦ starting time: < 0.5 s ◦ warm-up time (60 %): < 1 s • lifespan: ◦ nominal life time: 30 000 h ◦ number of switching cycles: 15 000 • dimensions & weight: ◦ dimensions (W x H x D): ◦ spot: 115 x 85 x 75 mm ◦ incl. bracket: - ◦ cable length: 30 cm ◦ weight: 500g ±20g



LEDA3001CW-GP



5 410329 591991