

OUTDOOR FLOODLIGHT - 10 W EPISTAR CHIP - 3000 K

PEREL®

FR PROJECTEUR LED D'EXTÉRIEUR - PUCE EPISTAR 10 W - 3000 K
NL LED-SCHIJNWERPER VOOR BUITENSHUIS - 10 W EPISTAR CHIP - 3000 K
DE LED-STRAHLER FÜR DEN AUßENBEREICH - 10 W EPISTAR CHIP - 3000 K
ES PROYECTOR LED PARA EXTERIORES - 10 W EPISTAR CHIP - 30000 K

floodlight for commercial or residential use • die-cast aluminium housing with tempered glass
• ribbed for maximum heat dissipation • with adjustable bracket • suited for outdoor use (IP65) • with 30 cm unterminated cable

body colour: black • electrical data: ◦ power LED module: 1 * 10 W COB Epistar ◦ total nominal power: 10.5 W ◦ nominal voltage driver: 230 VAC ◦ nominal voltage LED module: 30-36 V ◦ power factor: 0.9 ◦ energy consumption kWh/1000 h: 10,5 ◦ cable: H05RN-F 3G1.0 - 30 cm • light technical data: ◦ colour: warm white ◦ colour temperature: 3000 K ◦ beam angle: 120° ◦ luminous flux: 600 lm ◦ colour rendering index: 70 ◦ starting time: < 0.5 s ◦ warm-up time (60 %): < 1 s • lifespan: ◦ nominal life time: 30 000 h ◦ number of switching cycles: 15 000 • dimensions & weight: ◦ dimensions (W x H x D): ◦ spot: 115 x 85 x 75 mm ◦ incl. bracket: - ◦ cable length: 30 cm ◦ weight: 400g ±20g



LEDA3001WW-B



5 410329 592011



OUTDOOR LED FLOODLIGHT WITH PIR SENSOR - 10 W EPISTAR CHIP - 3000 K

PEREL®

FR PROJECTEUR LED D'EXTÉRIEUR AVEC CAPTEUR PIR - PUCE EPISTAR 10 W - 3000 K
NL LED-SCHIJNWERPER VOOR BUITENSHUIS MET PIR-SENSOR - 10 W EPISTAR CHIP - 3000 K
DE LED-STRAHLER FÜR DEN AUßENBEREICH MIT PIR-SENSOR - 10 W EPISTAR CHIP - 3000 K
ES PROYECTOR LED PARA EXTERIORES CON SENSOR PIR - 10 W EPISTAR CHIP - 3000 K

floodlight for commercial or residential use • die-cast aluminium housing with tempered glass
• ribbed for maximum heat dissipation • with adjustable bracket • with 120° pyroelectric infrared (PIR) motion sensor • suited for outdoor use (floodlight - IP65, PIR sensor - IP44)
• with 30 cm unterminated cable

body colour: black • electrical data: ◦ power LED module: 1 * 10 W COB Epistar ◦ total nominal power: 12.5 W ◦ nominal voltage driver: 230 VAC ◦ nominal voltage LED module: 30-36 V ◦ power factor: 0.6 ◦ energy consumption kWh/1000 h: 12,5 ◦ cable: H05RN-F 3G1.0 - 30 cm • light technical data: ◦ colour: warm white ◦ colour temperature: 3000 K ◦ beam angle: 120° ◦ luminous flux: 600 lm ◦ colour rendering index: 70 ◦ starting time: < 0.5 s ◦ warm-up time (60 %): < 1 s • lifespan: ◦ nominal life time: 30 000 h ◦ number of switching cycles: 15 000 • dimensions & weight: ◦ dimensions (W x H x D): ◦ spot: 115 x 85 x 75 mm ◦ incl. bracket: - ◦ cable length: 30 cm ◦ weight: 500g ±20g



LEDA3001WW-BP



5 410329 601706



OUTDOOR FLOODLIGHT - 10 W EPISTAR CHIP - 3000 K

PEREL®

FR PROJECTEUR LED D'EXTÉRIEUR - PUCE EPISTAR 10 W - 3000 K
NL LED-SCHIJNWERPER VOOR BUITENSHUIS - 10 W EPISTAR CHIP - 3000 K
DE LED-STRAHLER FÜR DEN AUßENBEREICH - 10 W EPISTAR CHIP - 3000 K
ES PROYECTOR LED PARA EXTERIORES - 10 W EPISTAR CHIP - 30000 K

floodlight for commercial or residential use • die-cast aluminium housing with tempered glass
• ribbed for maximum heat dissipation • with adjustable bracket • suited for outdoor use (IP65) • with 30 cm unterminated cable

body colour: grey • electrical data: ◦ power LED module: 1 * 10 W COB Epistar ◦ total nominal power: 10.5 W ◦ nominal voltage driver: 230 VAC ◦ nominal voltage LED module: 30-36 V ◦ power factor: 0.9 ◦ energy consumption kWh/1000 h: 10,5 ◦ cable: H05RN-F 3G1.0 - 30 cm • light technical data: ◦ colour: warm white ◦ colour temperature: 3000 K ◦ beam angle: 120° ◦ luminous flux: 600 lm ◦ colour rendering index: 70 ◦ starting time: < 0.5 s ◦ warm-up time (60 %): < 1 s • lifespan: ◦ nominal life time: 30 000 h ◦ number of switching cycles: 15 000 • dimensions & weight: ◦ dimensions (W x H x D): ◦ spot: 115 x 85 x 75 mm ◦ incl. bracket: - ◦ cable length: 30 cm ◦ weight: 400g ±20g



LEDA3001WW-G



5 410329 592028



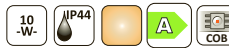
OUTDOOR LED FLOODLIGHT WITH PIR SENSOR - 10 W EPISTAR CHIP - 3000 K

PEREL®

FR: PROJECTEUR LED D'EXTÉRIEUR AVEC CAPTEUR PIR - PUCE EPISTAR 10 W - 3000 K
 NL: LED-SCHIJNWERPER VOOR BUITENSHUIS MET PIR-SENSOR - 10 W EPISTAR CHIP - 3000 K
 DE: LED-STRAHLER FÜR DEN AUßENBEREICH MIT PIR-SENSOR - 10 W EPISTAR CHIP - 3000 K
 ES: PROYECTOR LED PARA EXTERIORES CON SENSOR PIR - 10 W EPISTAR CHIP - 3000 K

floodlight for commercial or residential use • die-cast aluminium housing with tempered glass
 • ribbed for maximum heat dissipation • with adjustable bracket • with 120° pyroelectric infrared (PIR) motion sensor • suited for outdoor use (floodlight - IP65, PIR sensor - IP44)
 • with 30 cm unterminated cable

body colour: grey • electrical data: ◦ power LED module: 1 * 10 W COB Epistar ◦ total nominal power: 12.5 W ◦ nominal voltage driver: 230 VAC ◦ nominal voltage LED module: 30-36 V ◦ power factor: 0.6 ◦ energy consumption kWh/1000 h: 12.5 ◦ cable: H05RN-F 3G1.0 - 30 cm • light technical data: ◦ colour: warm white ◦ colour temperature: 3000 K ◦ beam angle: 120° ◦ luminous flux: 600 lm ◦ colour rendering index: 70 ◦ starting time: < 0.5 s ◦ warm-up time (60 %): < 1 s • lifespan: ◦ nominal life time: 30 000 h ◦ number of switching cycles: 15 000 • dimensions & weight: ◦ dimensions (W x H x D): ◦ spot: 115 x 85 x 75 mm ◦ incl. bracket: - ◦ cable length: 30 cm ◦ weight: 500g ±20g



LEDA3001WW-GP



5 410329 601713



OUTDOOR FLOODLIGHT - 20 W EPISTAR CHIP - 6500 K

PEREL®

FR: PROJECTEUR LED D'EXTÉRIEUR - PUCE EPISTAR 20 W - 6500 K
 NL: LED-SCHIJNWERPER VOOR BUITENSHUIS - 20 W EPISTAR CHIP - 6500 K
 DE: LED-STRAHLER FÜR DEN AUßENBEREICH - 20 W EPISTAR CHIP - 6500 K
 ES: PROYECTOR LED PARA EXTERIORES - 20 W EPISTAR CHIP - 6500 K

floodlight for commercial or residential use • die-cast aluminium housing with tempered glass
 • ribbed for maximum heat dissipation • with adjustable bracket • suited for outdoor use (IP65) • with 30 cm unterminated cable

body colour: black • electrical data: ◦ power LED module: 1 * 20 W COB Epistar ◦ total nominal power: 21 W ◦ nominal voltage driver: 230 VAC ◦ nominal voltage LED module: 30-36 V ◦ power factor: 0.9 ◦ energy consumption kWh/1000 h: 21 ◦ cable: H05RN-F 3G1.0 - 30 cm • light technical data: ◦ colour: cold white ◦ colour temperature: 6500 K ◦ beam angle: 120° ◦ luminous flux: 1200 lm ◦ colour rendering index: 70 ◦ starting time: < 0.5 s ◦ warm-up time (60 %): < 1 s • lifespan: ◦ nominal life time: 30 000 h ◦ number of switching cycles: 15 000 • dimensions & weight: ◦ dimensions (W x H x D): ◦ spot: 180 x 140 x 93 mm ◦ incl. bracket: - ◦ cable length: 30 cm ◦ weight: 900g ±50g



LEDA3002CW-B



5 410329 592059



OUTDOOR LED FLOODLIGHT WITH PIR SENSOR - 20 W EPISTAR CHIP - 6500 K

PEREL®

FR: PROJECTEUR LED D'EXTÉRIEUR AVEC CAPTEUR PIR - PUCE EPISTAR 20 W - 6500 K
 NL: LED-SCHIJNWERPER VOOR BUITENSHUIS MET PIR-SENSOR - 20 W EPISTAR CHIP - 6500 K
 DE: LED-STRAHLER MIT PIR-BEWEGUNGSMELDER FÜR DEN AUßENBEREICH - 20 W EPISTAR CHIP - 6500 K
 ES: PROYECTOR LED CON SENSOR PIR PARA EXTERIORES - 20 W EPISTAR CHIP - 6500 K

floodlight for commercial or residential use • die-cast aluminium housing with tempered glass
 • ribbed for maximum heat dissipation • with adjustable bracket • with 120° pyroelectric infrared (PIR) motion sensor • suited for outdoor use (floodlight - IP65, PIR sensor - IP44)
 • with 30 cm unterminated cable

body colour: black • electrical data: ◦ power LED module: 1 * 20 W COB Epistar ◦ total nominal power: 22.5 W ◦ nominal voltage driver: 230 VAC ◦ nominal voltage LED module: 30-36 V ◦ power factor: 0.6 ◦ energy consumption kWh/1000 h: 22.5 ◦ cable: H05RN-F 3G1.0 - 30 cm • light technical data: ◦ colour: cold white ◦ colour temperature: 6500 K ◦ beam angle: 120° ◦ luminous flux: 1200 lm ◦ colour rendering index: 70 ◦ starting time: < 0.5 s ◦ warm-up time (60 %): < 1 s • lifespan: ◦ nominal life time: 30 000 h ◦ number of switching cycles: 15 000 • dimensions & weight: ◦ dimensions (W x H x D): ◦ spot: 180 x 140 x 93 mm ◦ incl. bracket: - ◦ cable length: 30 cm ◦ weight: 1000g ±50g



LEDA3002CW-BP



5 410329 592066



OUTDOOR FLOODLIGHT - 20 W EPISTAR CHIP - 6500 K

PEREL®

FR PROJECTEUR LED D'EXTÉRIEUR - PUCE EPISTAR 20 W - 6500 K
NL LED-SCHIJNWERPER VOOR BUITENSHUIS - 20 W EPISTAR CHIP - 6500 K
DE LED-STRAHLER FÜR DEN AUßENBEREICH - 20 W EPISTAR CHIP - 6500 K
ES PROYECTOR LED PARA EXTERIORES - 20 W EPISTAR CHIP - 6500 K

floodlight for commercial or residential use • die-cast aluminium housing with tempered glass
• ribbed for maximum heat dissipation • with adjustable bracket • suited for outdoor use (IP65) • with 30 cm unterminated cable

body colour: grey • electrical data: ◦ power LED module: 1 * 20 W COB Epistar ◦ total nominal power: 21 W ◦ nominal voltage driver: 230 VAC ◦ nominal voltage LED module: 30-36 V ◦ power factor: 0.9 ◦ energy consumption kWh/1000 h: 21 ◦ cable: H05RN-F 3G1.0 - 30 cm • light technical data: ◦ colour: cold white ◦ colour temperature: 6500 K ◦ beam angle: 120° ◦ luminous flux: 1200 lm ◦ colour rendering index: 70 ◦ starting time: < 0.5 s ◦ warm-up time (60 %): < 1 s • lifespan: ◦ nominal life time: 30 000 h ◦ number of switching cycles: 15 000 • dimensions & weight: ◦ dimensions (W x H x D): ◦ spot: 180 x 140 x 93 mm ◦ incl. bracket: - ◦ cable length: 30 cm ◦ weight: 900g ±50g



LEDA3002CW-G



5 410329 592073



OUTDOOR LED FLOODLIGHT WITH PIR SENSOR - 20 W EPISTAR CHIP - 6500 K

PEREL®

FR PROJECTEUR D'EXTÉRIEUR AVEC CAPTEUR PIR - PUCE EPISTAR 20 W - 6500 K
NL LED-SCHIJNWERPER VOOR BUITENSHUIS MET PIR-SENSOR - 20 W EPISTAR CHIP - 6500 K
DE LED-STRAHLER MIT PIR-BEWEGUNGSMELDER FÜR DEN AUßENBEREICH - 20 W EPISTAR CHIP - 6500 K
ES PROYECTOR LED CON SENSOR PIR PARA EXTERIORES - 20 W EPISTAR CHIP - 6500 K

floodlight for commercial or residential use • die-cast aluminium housing with tempered glass
• ribbed for maximum heat dissipation • with adjustable bracket • with 120° pyroelectric infrared (PIR) motion sensor • suited for outdoor use (floodlight - IP65, PIR sensor - IP44)
• with 30 cm unterminated cable

body colour: grey • electrical data: ◦ power LED module: 1 * 20 W COB Epistar ◦ total nominal power: 22.5 W ◦ nominal voltage driver: 230 VAC ◦ nominal voltage LED module: 30-36 V ◦ power factor: 0.6 ◦ energy consumption kWh/1000 h: 22.5 ◦ cable: H05RN-F 3G1.0 - 30 cm • light technical data: ◦ colour: cold white ◦ colour temperature: 6500 K ◦ beam angle: 120° ◦ luminous flux: 1200 lm ◦ colour rendering index: 70 ◦ starting time: < 0.5 s ◦ warm-up time (60 %): < 1 s • lifespan: ◦ nominal life time: 30 000 h ◦ number of switching cycles: 15 000 • dimensions & weight: ◦ dimensions (W x H x D): ◦ spot: 180 x 140 x 93 mm ◦ incl. bracket: - ◦ cable length: 30 cm ◦ weight: 1000g ±50g



LEDA3002CW-GP



5 410329 592080



OUTDOOR LED FLOODLIGHT - 20 W EPISTAR CHIP - 3000 K

PEREL®

FR PROJECTEUR LED D'EXTÉRIEUR - PUCE EPISTAR 20 W - 3000 K
NL LED-SCHIJNWERPER VOOR BUITENSHUIS - 20 W EPISTAR CHIP - 3000 K
DE LED-STRAHLER FÜR DEN AUßENBEREICH - 20 W EPISTAR CHIP - 3000 K
ES PROYECTOR LED PARA EXTERIORES - 20 W EPISTAR CHIP - 3000 K

floodlight for commercial or residential use • die-cast aluminium housing with tempered glass
• ribbed for maximum heat dissipation • with adjustable bracket • suited for outdoor use (IP65) • with 30 cm unterminated cable

body colour: black • electrical data: ◦ power LED module: 1 * 20 W COB Epistar ◦ total nominal power: 21 W ◦ nominal voltage driver: 230 VAC ◦ nominal voltage LED module: 30-36 V ◦ power factor: 0.9 ◦ energy consumption kWh/1000 h: 21 ◦ cable: H05RN-F 3G1.0 - 30 cm • light technical data: ◦ colour: warm white ◦ colour temperature: 3000 K ◦ beam angle: 120° ◦ luminous flux: 1200 lm ◦ colour rendering index: 70 ◦ starting time: < 0.5 s ◦ warm-up time (60 %): < 1 s • lifespan: ◦ nominal life time: 30 000 h ◦ number of switching cycles: 15 000 • dimensions & weight: ◦ dimensions (W x H x D): ◦ spot: 180 x 140 x 93 mm ◦ incl. bracket: - ◦ cable length: 30 cm ◦ weight: 900g ±50g



LEDA3002WW-B



5 410329 601720



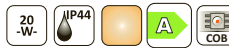
OUTDOOR LED FLOODLIGHT WITH PIR SENSOR - 20 W EPISTAR CHIP - 3000 K



FR PROJECTEUR LED D'EXTÉRIEUR AVEC CAPTEUR PIR - PUCE EPISTAR 20 W - 3000 K
 NL LED-SCHIJNWERPER VOOR BUITENSHUIS MET PIR-SENSOR - 20 W EPISTAR CHIP - 3000 K
 DE LED-STRAHLER MIT PIR-BEWEGUNGSMELDER FÜR DEN AUßENBEREICH - 20 W EPISTAR CHIP - 3000 K
 ES PROYECTOR LED CON SENSOR PIR PARA EXTERIORES - 20 W EPISTAR CHIP - 3000 K

floodlight for commercial or residential use ● die-cast aluminium housing with tempered glass ● ribbed for maximum heat dissipation ● with adjustable bracket ● with 120° pyroelectric infrared (PIR) motion sensor ● suited for outdoor use (floodlight - IP65, PIR sensor - IP44) ● with 30 cm unterminated cable

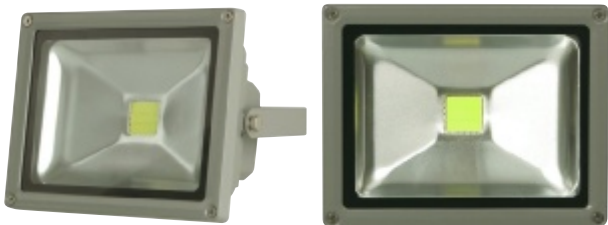
body colour: black ● electrical data: ○ power LED module: 1 * 20 W COB Epistar ○ total nominal power: 22.5 W ○ nominal voltage driver: 230 VAC ○ nominal voltage LED module: 30-36 V ○ power factor: 0.6 ○ energy consumption kWh/1000 h: 22.5 ○ cable: H05RN-F 3G1.0 - 30 cm ● light technical data: ○ colour: warm white ○ colour temperature: 3000 K ○ beam angle: 120° ○ luminous flux: 1200 lm ○ colour rendering index: 70 ○ starting time: < 0.5 s ○ warm-up time (60 %): < 1 s ● lifespan: ○ nominal life time: 30 000 h ○ number of switching cycles: 15 000 ● dimensions & weight: ○ dimensions (W x H x D): = spot: 180 x 140 x 93 mm = incl. bracket: - ○ cable length: 30 cm ○ weight: 1000g ±50g



LEDA3002WW-BP



5 410329 601737



OUTDOOR FLOODLIGHT - 20 W EPISTAR CHIP - 3000 K



FR PROJECTEUR LED D'EXTÉRIEUR - PUCE EPISTAR 20 W - 3000 K
 NL LED-SCHIJNWERPER VOOR BUITENSHUIS - 20 W EPISTAR CHIP - 3000 K
 DE LED-STRAHLER FÜR DEN AUßENBEREICH - 20 W EPISTAR CHIP - 3000 K
 ES PROYECTOR LED PARA EXTERIORES - 20 W EPISTAR CHIP - 3000 K

floodlight for commercial or residential use ● die-cast aluminium housing with tempered glass ● ribbed for maximum heat dissipation ● with adjustable bracket ● suited for outdoor use (IP65) ● with 30 cm unterminated cable

body colour: grey ● electrical data: ○ power LED module: 1 * 20 W COB Epistar ○ total nominal power: 21 W ○ nominal voltage driver: 230 VAC ○ nominal voltage LED module: 30-36 V ○ power factor: 0.9 ○ energy consumption kWh/1000 h: 21 ○ cable: H05RN-F 3G1.0 - 30 cm ● light technical data: ○ colour: warm white ○ colour temperature: 3000 K ○ beam angle: 120° ○ luminous flux: 1200 lm ○ colour rendering index: 70 ○ starting time: < 0.5 s ○ warm-up time (60 %): < 1 s ● lifespan: ○ nominal life time: 30 000 h ○ number of switching cycles: 15 000 ● dimensions & weight: ○ dimensions (W x H x D): = spot: 180 x 140 x 93 mm = incl. bracket: - ○ cable length: 30 cm ○ weight: 900g ±50g



LEDA3002WW-G



5 410329 592097



OUTDOOR LED FLOODLIGHT WITH PIR SENSOR - 20 W EPISTAR CHIP - 3000 K



FR PROJECTEUR LED D'EXTÉRIEUR AVEC CAPTEUR PIR - PUCE EPISTAR 20 W - 3000 K
 NL LED-SCHIJNWERPER VOOR BUITENSHUIS MET PIR-SENSOR - 20 W EPISTAR CHIP - 3000 K
 DE LED-STRAHLER MIT PIR-BEWEGUNGSMELDER FÜR DEN AUßENBEREICH - 20 W EPISTAR CHIP - 3000 K
 ES PROYECTOR LED CON SENSOR PIR PARA EXTERIORES - 20 W EPISTAR CHIP - 3000 K

floodlight for commercial or residential use ● die-cast aluminium housing with tempered glass ● ribbed for maximum heat dissipation ● with adjustable bracket ● with 120° pyroelectric infrared (PIR) motion sensor ● suited for outdoor use (floodlight - IP65, PIR sensor - IP44) ● with 30 cm unterminated cable

body colour: grey ● electrical data: ○ power LED module: 1 * 20 W COB Epistar ○ total nominal power: 22.5 W ○ nominal voltage driver: 230 VAC ○ nominal voltage LED module: 30-36 V ○ power factor: 0.6 ○ energy consumption kWh/1000 h: 22.5 ○ cable: H05RN-F 3G1.0 - 30 cm ● light technical data: ○ colour: warm white ○ colour temperature: 3000 K ○ beam angle: 120° ○ luminous flux: 1200 lm ○ colour rendering index: 70 ○ starting time: < 0.5 s ○ warm-up time (60 %): < 1 s ● lifespan: ○ nominal life time: 30 000 h ○ number of switching cycles: 15 000 ● dimensions & weight: ○ dimensions (W x H x D): = spot: 180 x 140 x 93 mm = incl. bracket: - ○ cable length: 30 cm ○ weight: 1000g ±50g



LEDA3002WW-GP



5 410329 601744



OUTDOOR FLOODLIGHT - 30 W EPISTAR CHIP - 6500 K

PEREL®

FR PROJECTEUR LED D'EXTÉRIEUR - PUCE EPISTAR 30 W - 6500 K
NL LED-SCHIJNWERPER VOOR BUITENSHUIS - 30 W EPISTAR CHIP - 6500 K
DE LED-STRAHLER FÜR DEN AUßENBEREICH - 30 W EPISTAR CHIP - 6500 K
ES PROYECTOR LED PARA EXTERIORES - 30 W EPISTAR CHIP - 6500 K

floodlight for commercial or residential use • die-cast aluminium housing with tempered glass
• ribbed for maximum heat dissipation • with adjustable bracket • suited for outdoor use (IP65) • with 40 cm unterminated cable

body colour: black • electrical data: ◦ power LED module: 1 * 30 W COB Epistar ◦ total nominal power: 31 W ◦ nominal voltage driver: 230 VAC ◦ nominal voltage LED module: 30-36 V ◦ power factor: 0.9 ◦ energy consumption kWh/1000 h: 31 ◦ cable: H05RN-F 3G1.0 - 40 cm • light technical data: ◦ colour: cold white ◦ colour temperature: 6500 K ◦ beam angle: 120° ◦ luminous flux: 1800 lm ◦ colour rendering index: 70 ◦ starting time: < 0.5 s ◦ warm-up time (60 %): < 1 s • lifespan: ◦ nominal life time: 30 000 h ◦ number of switching cycles: 15 000 • dimensions & weight: ◦ dimensions (W x H x D): ◦ spot: 225 x 183 x 108 mm = incl. bracket: - ◦ cable length: 40 cm ◦ weight: 1750g



LEDA3003CW-B



5 410329 592127



OUTDOOR LED FLOODLIGHT WITH PIR SENSOR - 30 W EPISTAR CHIP - 6500 K

PEREL®

FR PROJECTEUR LED D'EXTÉRIEUR AVEC CAPTEUR PIR - PUCE EPISTAR 30 W - 6500 K
NL LED-SCHIJNWERPER VOOR BUITENSHUIS MET PIR-SENSOR - 30 W EPISTAR CHIP - 6500 K
DE LED-STRAHLER MIT PIR-BEWEGUNGSMELDER FÜR DEN AUßENBEREICH - 30 W EPISTAR CHIP - 6500 K
ES PROYECTOR LED CON SENSOR PIR PARA EXTERIORES - 30 W EPISTAR CHIP - 6500 K

floodlight for commercial or residential use • die-cast aluminium housing with tempered glass
• ribbed for maximum heat dissipation • with adjustable bracket • with 180° pyroelectric infrared (PIR) motion sensor • suited for outdoor use (floodlight - IP65, PIR sensor - IP44)
• with 40 cm unterminated cable

body colour: black • electrical data: ◦ power LED module: 1 * 30 W COB Epistar ◦ total nominal power: 32,5 W ◦ nominal voltage driver: 230 VAC ◦ nominal voltage LED module: 30-36 V ◦ power factor: 0.9 ◦ energy consumption kWh/1000 h: 32,5 ◦ cable: H05RN-F 3G1.0 - 40 cm • light technical data: ◦ colour: cold white ◦ colour temperature: 6500 K ◦ beam angle: 120° ◦ luminous flux: 1800 lm ◦ colour rendering index: 70 ◦ starting time: < 0.5 s ◦ warm-up time (60 %): < 1 s • lifespan: ◦ nominal life time: 30 000 h ◦ number of switching cycles: 15 000 • dimensions & weight: ◦ dimensions (W x H x D): ◦ spot: 225 x 183 x 108 mm = incl. bracket: - ◦ cable length: 40 cm ◦ weight: 1850g



LEDA3003CW-BP



5 410329 592134



OUTDOOR FLOODLIGHT - 30 W EPISTAR CHIP - 6500 K

PEREL®

FR PROJECTEUR LED D'EXTÉRIEUR - PUCE EPISTAR 30 W - 6500 K
NL LED-SCHIJNWERPER VOOR BUITENSHUIS - 30 W EPISTAR CHIP - 6500 K
DE LED-STRAHLER FÜR DEN AUßENBEREICH - 30 W EPISTAR CHIP - 6500 K
ES PROYECTOR LED PARA EXTERIORES - 30 W EPISTAR CHIP - 6500 K

floodlight for commercial or residential use • die-cast aluminium housing with tempered glass
• ribbed for maximum heat dissipation • with adjustable bracket • suited for outdoor use (IP65) • with 40 cm unterminated cable

body colour: grey • electrical data: ◦ power LED module: 1 * 30 W COB Epistar ◦ total nominal power: 31 W ◦ nominal voltage driver: 230 VAC ◦ nominal voltage LED module: 30-36 V ◦ power factor: 0.9 ◦ energy consumption kWh/1000 h: 31 ◦ cable: H05RN-F 3G1.0 - 40 cm • light technical data: ◦ colour: cold white ◦ colour temperature: 6500 K ◦ beam angle: 120° ◦ luminous flux: 1800 lm ◦ colour rendering index: 70 ◦ starting time: < 0.5 s ◦ warm-up time (60 %): < 1 s • lifespan: ◦ nominal life time: 30 000 h ◦ number of switching cycles: 15 000 • dimensions & weight: ◦ dimensions (W x H x D): ◦ spot: 225 x 183 x 108 mm = incl. bracket: - ◦ cable length: 40 cm ◦ weight: 1750g



LEDA3003CW-G



5 410329 592141



OUTDOOR LED FLOODLIGHT WITH PIR SENSOR - 30 W EPISTAR CHIP - 6500 K



FR: PROJECTEUR LED D'EXTÉRIEUR AVEC CAPTEUR PIR - PUCE EPISTAR 30 W - 6500 K
 NL: LED-SCHIJNWERPER VOOR BUITENSHUIS MET PIR-SENSOR - 30 W EPISTAR CHIP - 6500 K
 DE: LED-STRAHLER MIT PIR-BEWEGUNGSMELDER FÜR DEN AUßENBEREICH - 30 W EPISTAR CHIP - 6500 K
 ES: PROYECTOR LED CON SENSOR PIR PARA EXTERIORES - 30 W EPISTAR CHIP - 6500 K

floodlight for commercial or residential use • die-cast aluminium housing with tempered glass
 • ribbed for maximum heat dissipation • with adjustable bracket • with 180° pyroelectric infrared (PIR) motion sensor • suited for outdoor use (floodlight - IP65, PIR sensor - IP44)
 • with 40 cm unterminated cable

body colour: grey • electrical data: ◦ power LED module: 1 * 30 W COB Epistar ◦ total nominal power: 32,5 W ◦ nominal voltage driver: 230 VAC ◦ nominal voltage LED module: 30-36 V ◦ power factor: 0.9 ◦ energy consumption kWh/1000 h: 32,5 ◦ cable: H05RN-F 3G1.0 - 40 cm • light technical data: ◦ colour: cold white ◦ colour temperature: 6500 K ◦ beam angle: 120° ◦ luminous flux: 1800 lm ◦ colour rendering index: 70 ◦ starting time: < 0.5 s ◦ warm-up time (60 %): < 1 s • lifespan: ◦ nominal life time: 30 000 h ◦ number of switching cycles: 15 000 • dimensions & weight: ◦ dimensions (W x H x D): ◦ spot: 225 x 183 x 108 mm = incl. bracket: - ◦ cable length: 40 cm ◦ weight: 1850g



LEDA3003CW-GP



5 410329 592158



OUTDOOR FLOODLIGHT - 30 W EPISTAR CHIP - 3000 K



FR: PROJECTEUR LED D'EXTÉRIEUR - PUCE EPISTAR 30 W - 3000 K
 NL: LED-SCHIJNWERPER VOOR BUITENSHUIS - 30 W EPISTAR CHIP - 3000 K
 DE: LED-STRAHLER FÜR DEN AUßENBEREICH - 30 W EPISTAR CHIP - 3000 K
 ES: PROYECTOR LED PARA EXTERIORES - 30 W EPISTAR CHIP - 3000 K

floodlight for commercial or residential use • die-cast aluminium housing with tempered glass
 • ribbed for maximum heat dissipation • with adjustable bracket • suited for outdoor use (IP65) • with 40 cm unterminated cable

body colour: black • electrical data: ◦ power LED module: 1 * 30 W COB Epistar ◦ total nominal power: 31 W ◦ nominal voltage driver: 230 VAC ◦ nominal voltage LED module: 30-36 V ◦ power factor: 0.9 ◦ energy consumption kWh/1000 h: 31 ◦ cable: H05RN-F 3G1.0 - 40 cm • light technical data: ◦ colour: warm white ◦ colour temperature: 3000 K ◦ beam angle: 120° ◦ luminous flux: 1800 lm ◦ colour rendering index: 70 ◦ starting time: < 0.5 s ◦ warm-up time (60 %): < 1 s • lifespan: ◦ nominal life time: 30 000 h ◦ number of switching cycles: 15 000 • dimensions & weight: ◦ dimensions (W x H x D): ◦ spot: 225 x 183 x 108 mm = incl. bracket: - ◦ cable length: 40 cm ◦ weight: 1750g



LEDA3003WW-B



5 410329 592172



OUTDOOR LED FLOODLIGHT WITH PIR SENSOR - 30 W EPISTAR CHIP - 3000 K



FR: PROJECTEUR LED D'EXTÉRIEUR AVEC CAPTEUR PIR - PUCE EPISTAR 30 W - 3000 K
 NL: LED-SCHIJNWERPER VOOR BUITENSHUIS MET PIR-SENSOR - 30 W EPISTAR CHIP - 3000 K
 DE: LED-STRAHLER FÜR DEN AUSSENBEREICH MIT PIR-SENSOR - 30 W EPISTAR CHIP - 3000 K
 ES: PROYECTOR LED PARA EXTERIORES CON SENSOR PIR - 30 W EPISTAR CHIP - 3000 K

floodlight for commercial or residential use • die-cast aluminium housing with tempered glass
 • ribbed for maximum heat dissipation • with adjustable bracket • with 180° pyroelectric infrared (PIR) motion sensor • suited for outdoor use (floodlight - IP65, PIR sensor - IP44)
 • with 40 cm unterminated cable

body colour: black • electrical data: ◦ power LED module: 1 * 30 W COB Epistar ◦ total nominal power: 32.5 W ◦ nominal voltage driver: 230 VAC ◦ nominal voltage LED module: 30-36 V ◦ power factor: 0.9 ◦ energy consumption kWh/1000 h: 32,5 ◦ cable: H05RN-F 3G1.0 - 40 cm • light technical data: ◦ colour: warm white ◦ colour temperature: 3000 K ◦ beam angle: 120° ◦ luminous flux: 1800 lm ◦ colour rendering index: 70 ◦ starting time: < 0.5 s ◦ warm-up time (60 %): < 1 s • lifespan: ◦ nominal life time: 30 000 h ◦ number of switching cycles: 15 000 • dimensions & weight: ◦ dimensions (W x H x D): ◦ spot: 225 x 193 x 108 mm = incl. bracket: - ◦ cable length: 40 cm ◦ weight: 1850g



LEDA3003WW-BP



5 410329 601751



OUTDOOR FLOODLIGHT - 30 W EPISTAR CHIP - 3000 K

PEREL®

FR PROJECTEUR LED D'EXTÉRIEUR - PUCE EPISTAR 30 W - 3000 K
NL LED-SCHIJNWERPER VOOR BUITENSHUIS - 30 W EPISTAR CHIP - 3000 K
DE LED-STRAHLER FÜR DEN AUßENBEREICH - 30 W EPISTAR CHIP - 3000 K
ES PROYECTOR LED PARA EXTERIORES - 30 W EPISTAR CHIP - 3000 K

floodlight for commercial or residential use • die-cast aluminium housing with tempered glass
• ribbed for maximum heat dissipation • with adjustable bracket • suited for outdoor use (IP65) • with 40 cm unterminated cable

body colour: grey • electrical data: ◦ power LED module: 1 * 30 W COB Epistar ◦ total nominal power: 31 W ◦ nominal voltage driver: 230 VAC ◦ nominal voltage LED module: 30-36 V ◦ power factor: 0.9 ◦ energy consumption kWh/1000 h: 31 ◦ cable: H05RN-F 3G1.0 - 40 cm • light technical data: ◦ colour: warm white ◦ colour temperature: 3000 K ◦ beam angle: 120° ◦ luminous flux: 1800 lm ◦ colour rendering index: 70 ◦ starting time: < 0.5 s ◦ warm-up time (60 %): < 1 s • lifespan: ◦ nominal life time: 30 000 h ◦ number of switching cycles: 15 000 • dimensions & weight: ◦ dimensions (W x H x D): ◦ spot: 225 x 183 x 108 mm ◦ incl. bracket: - ◦ cable length: 40 cm ◦ weight: 1750g



LEDA3003WW-G



5 410329 592189



OUTDOOR LED FLOODLIGHT WITH PIR SENSOR - 30 W EPISTAR CHIP - 3000 K

PEREL®

FR PROJECTEUR LED D'EXTÉRIEUR AVEC CAPTEUR PIR - PUCE EPISTAR 30 W - 3000 K
NL LED-SCHIJNWERPER VOOR BUITENSHUIS MET PIR-SENSOR - 30 W EPISTAR CHIP - 3000 K
DE LED-STRAHLER FÜR DEN AUSSENBEREICH MIT PIR-SENSOR - 30 W EPISTAR CHIP - 3000 K
ES PROYECTOR LED PARA EXTERIORES CON SENSOR PIR - 30 W EPISTAR CHIP - 3000 K

floodlight for commercial or residential use • die-cast aluminium housing with tempered glass
• ribbed for maximum heat dissipation • with adjustable bracket • with 180° pyroelectric infrared (PIR) motion sensor • suited for outdoor use (floodlight - IP65, PIR sensor - IP44)
• with 40 cm unterminated cable

body colour: grey • electrical data: ◦ power LED module: 1 * 30 W COB Epistar ◦ total nominal power: 32.5 W ◦ nominal voltage driver: 230 VAC ◦ nominal voltage LED module: 30-36 V ◦ power factor: 0.9 ◦ energy consumption kWh/1000 h: 32,5 ◦ cable: H05RN-F 3G1.0 - 40 cm • light technical data: ◦ colour: warm white ◦ colour temperature: 3000 K ◦ beam angle: 120° ◦ luminous flux: 1800 lm ◦ colour rendering index: 70 ◦ starting time: < 0.5 s ◦ warm-up time (60 %): < 1 s • lifespan: ◦ nominal life time: 30 000 h ◦ number of switching cycles: 15 000 • dimensions & weight: ◦ dimensions (W x H x D): ◦ spot: 225 x 183 x 108 mm ◦ incl. bracket: - ◦ cable length: 40 cm ◦ weight: 1850g



LEDA3003WW-GP



5 410329 601904



OUTDOOR FLOODLIGHT - 50 W EPISTAR CHIP - 6500 K

PEREL®

FR PROJECTEUR LED D'EXTÉRIEUR - PUCE EPISTAR 50 W - 6500 K
NL LED-SCHIJNWERPER VOOR BUITENSHUIS - 50 W EPISTAR CHIP - 6500 K
DE LED-STRAHLER FÜR DEN AUßENBEREICH - 50 W EPISTAR CHIP - 6500 K
ES PROYECTOR LED PARA EXTERIORES - 50 W EPISTAR CHIP - 6500 K

floodlight for commercial or residential use • die-cast aluminium housing with tempered glass
• ribbed for maximum heat dissipation • with adjustable bracket • suited for outdoor use (IP65) • with 40 cm unterminated cable

body colour: black • electrical data: ◦ power LED module: 1 * 50 W COB Epistar ◦ total nominal power: 52 W ◦ nominal voltage driver: 230 VAC ◦ nominal voltage LED module: 30-36 V ◦ power factor: 0.9 ◦ energy consumption kWh/1000 h: 52 ◦ cable: H05RN-F 3G1.0 - 40 cm • light technical data: ◦ colour: cold white ◦ colour temperature: 6500 K ◦ beam angle: 120° ◦ luminous flux: 3000 lm ◦ colour rendering index: 70 ◦ starting time: < 0.5 s ◦ warm-up time (60 %): < 1 s • lifespan: ◦ nominal life time: 30 000 h ◦ number of switching cycles: 15 000 • dimensions & weight: ◦ dimensions (W x H x D): ◦ spot: 285 x 235 x 138 mm ◦ incl. bracket: - ◦ cable length: 40 cm ◦ weight: 2500g



LEDA3005CW-B



5 410329 592219



OUTDOOR LED FLOODLIGHT WITH PIR SENSOR - 50 W EPISTAR CHIP - 6500 K



FR: PROJECTEUR LED D'EXTÉRIEUR AVEC CAPTEUR PIR - PUCE EPISTAR 50 W - 6500 K
 NL: LED-SCHIJNWERPER VOOR BUITENSHUIS MET PIR-SENSOR - 50 W EPISTAR CHIP - 6500 K
 DE: LED-STRAHLER MIT PIR-BEWEGUNGSMELDER FÜR DEN AUßENBEREICH - 50 W EPISTAR CHIP - 6500 K
 ES: PROYECTOR LED CON SENSOR PIR PARA EXTERIORES - 50 W EPISTAR CHIP - 6500 K

floodlight for commercial or residential use • die-cast aluminium housing with tempered glass
 • ribbed for maximum heat dissipation • with adjustable bracket • with 180° pyroelectric infrared (PIR) motion sensor • suited for outdoor use (floodlight - IP65, PIR sensor - IP44)
 • with 40 cm unterminated cable

body colour: black • electrical data: ◦ power LED module: 1 * 50 W COB Epistar ◦ total nominal power: 54 W ◦ nominal voltage driver: 230 VAC ◦ nominal voltage LED module: 30-36 V ◦ power factor: 0.9 ◦ energy consumption kWh/1000 h: 54 ◦ cable: H05RN-F 3G1.0 - 40 cm • light technical data: ◦ colour: cold white ◦ colour temperature: 6500 K ◦ beam angle: 120° ◦ luminous flux: 3000 lm ◦ colour rendering index: 70 ◦ starting time: < 0.5 s ◦ warm-up time (60 %): < 1 s • lifespan: ◦ nominal life time: 30 000 h ◦ number of switching cycles: 15 000 • dimensions & weight: ◦ dimensions (W x H x D): ◦ spot: 285 x 235 x 138 mm ◦ incl. bracket: - ◦ cable length: 40 cm ◦ weight: 2600g



LEDA3005CW-BP



5 410329 592226



OUTDOOR FLOODLIGHT - 50 W EPISTAR CHIP - 6500 K



FR: PROJECTEUR LED D'EXTÉRIEUR - PUCE EPISTAR 50 W - 6500 K
 NL: LED-SCHIJNWERPER VOOR BUITENSHUIS - 50 W EPISTAR CHIP - 6500 K
 DE: LED-STRAHLER FÜR DEN AUßENBEREICH - 50 W EPISTAR CHIP - 6500 K
 ES: PROYECTOR LED PARA EXTERIORES - 50 W EPISTAR CHIP - 6500 K

floodlight for commercial or residential use • die-cast aluminium housing with tempered glass
 • ribbed for maximum heat dissipation • with adjustable bracket • suited for outdoor use (IP65) • with 40 cm unterminated cable

body colour: grey • electrical data: ◦ power LED module: 1 * 50 W COB Epistar ◦ total nominal power: 52 W ◦ nominal voltage driver: 230 VAC ◦ nominal voltage LED module: 30-36 V ◦ power factor: 0.9 ◦ energy consumption kWh/1000 h: 52 ◦ cable: H05RN-F 3G1.0 - 40 cm • light technical data: ◦ colour: cold white ◦ colour temperature: 6500 K ◦ beam angle: 120° ◦ luminous flux: 3000 lm ◦ colour rendering index: 70 ◦ starting time: < 0.5 s ◦ warm-up time (60 %): < 1 s • lifespan: ◦ nominal life time: 30 000 h ◦ number of switching cycles: 15 000 • dimensions & weight: ◦ dimensions (W x H x D): ◦ spot: 285 x 235 x 138 mm ◦ incl. bracket: - ◦ cable length: 40 cm ◦ weight: 2500g



LEDA3005CW-G



5 410329 592233



OUTDOOR LED FLOODLIGHT WITH PIR SENSOR - 50 W EPISTAR CHIP - 6500 K



FR: PROJECTEUR LED D'EXTÉRIEUR AVEC CAPTEUR PIR - PUCE EPISTAR 50 W - 6500 K
 NL: LED-SCHIJNWERPER VOOR BUITENSHUIS MET PIR-SENSOR - 50 W EPISTAR CHIP - 6500 K
 DE: LED-STRAHLER MIT PIR-BEWEGUNGSMELDER FÜR DEN AUßENBEREICH - 50 W EPISTAR CHIP - 6500 K
 ES: PROYECTOR LED CON SENSOR PIR PARA EXTERIORES - 50 W EPISTAR CHIP - 6500 K

floodlight for commercial or residential use • die-cast aluminium housing with tempered glass
 • ribbed for maximum heat dissipation • with adjustable bracket • with 180° pyroelectric infrared (PIR) motion sensor • suited for outdoor use (floodlight - IP65, PIR sensor - IP44)
 • with 40 cm unterminated cable

body colour: grey • electrical data: ◦ power LED module: 1 * 50 W COB Epistar ◦ total nominal power: 54 W ◦ nominal voltage driver: 230 VAC ◦ nominal voltage LED module: 30-36 V ◦ power factor: 0.9 ◦ energy consumption kWh/1000 h: 54 ◦ cable: H05RN-F 3G1.0 - 40 cm • light technical data: ◦ colour: cold white ◦ colour temperature: 6500 K ◦ beam angle: 120° ◦ luminous flux: 3000 lm ◦ colour rendering index: 70 ◦ starting time: < 0.5 s ◦ warm-up time (60 %): < 1 s • lifespan: ◦ nominal life time: 30 000 h ◦ number of switching cycles: 15 000 • dimensions & weight: ◦ dimensions (W x H x D): ◦ spot: 285 x 235 x 138 mm ◦ incl. bracket: - ◦ cable length: 40 cm ◦ weight: 2600g



LEDA3005CW-GP



5 410329 592240



OUTDOOR LED FLOODLIGHT - 50 W EPISTAR CHIP - 3000 K

PEREL®

FR PROJECTEUR LED D'EXTÉRIEUR - PUCE EPISTAR 50 W - 3000 K
NL LED-SCHIJNWERPER VOOR BUITENSHUIS - 50 W EPISTAR CHIP - 3000 K
DE LED-STRAHLER FÜR DEN AUSSENBEREICH - 50 W EPISTAR CHIP - 3000 K
ES PROYECTOR LED PARA EXTERIORES - 50 W EPISTAR CHIP - 3000 K

floodlight for commercial or residential use • die-cast aluminium housing with tempered glass
• ribbed for maximum heat dissipation • with adjustable bracket • suited for outdoor use
(IP65) • with 40 cm unterminated cable

body colour: black • electrical data: ◦ power LED module: 1 * 50 W COB Epistar ◦ total
nominal power: 52 W ◦ nominal voltage driver: 230 VAC ◦ nominal voltage LED module: 30-
36 V ◦ power factor: 0.9 ◦ energy consumption kWh/1000 h: 52 ◦ cable: H05RN-F 3G1.0 -
40 cm • light technical data: ◦ colour: warm white ◦ colour temperature: 3000 K ◦ beam
angle: 120° ◦ luminous flux: 3000 lm ◦ colour rendering index: 70 ◦ starting time: < 0.5 s
◦ warm-up time (60 %): < 1 s • lifespan: ◦ nominal life time: 30 000 h ◦ number of switching
cycles: 15 000 • dimensions & weight: ◦ dimensions (W x H x D): ◦ spot: 285 x 235 x 138 mm
◦ incl. bracket: - ◦ cable length: 40 cm ◦ weight: 2500g



LEDA3005WW-B



5 410329 601768



OUTDOOR LED FLOODLIGHT WITH PIR SENSOR - 50 W EPISTAR CHIP - 3000 K

PEREL®

FR PROJECTEUR LED D'EXTÉRIEUR AVEC CAPTEUR PIR - PUCE EPISTAR 50 W - 3000 K
NL LED-SCHIJNWERPER VOOR BUITENSHUIS MET PIR-SENSOR - 50 W EPISTAR CHIP
- 3000 K
DE LED-STRAHLER FÜR DEN AUSSENBEREICH MIT PIR-SENSOR - 50 W EPISTAR CHIP
- 3000 K
ES PROYECTOR LED PARA EXTERIORES CON SENSOR PIR - 50 W EPISTAR CHIP -
3000 K

floodlight for commercial or residential use • die-cast aluminium housing with tempered glass
• ribbed for maximum heat dissipation • with adjustable bracket • with 180° pyroelectric
infrared (PIR) motion sensor • suited for outdoor use (floodlight - IP65, PIR sensor - IP44)
• with 40 cm unterminated cable

body colour: black • electrical data: ◦ power LED module: 1 * 50 W COB Epistar ◦ total
nominal power: 54 W ◦ nominal voltage driver: 230 VAC ◦ nominal voltage LED module: 30-
36 V ◦ power factor: 0.9 ◦ energy consumption kWh/1000 h: 54 ◦ cable: H05RN-F 3G1.0 -
40 cm • light technical data: ◦ colour: warm white ◦ colour temperature: 3000 K ◦ beam
angle: 120° ◦ luminous flux: 3000 lm ◦ colour rendering index: 70 ◦ starting time: < 0.5 s
◦ warm-up time (60 %): < 1 s • lifespan: ◦ nominal life time: 30 000 h ◦ number of switching
cycles: 15 000 • dimensions & weight: ◦ dimensions (W x H x D): ◦ spot: 285 x 235 x 138 mm
◦ incl. bracket: - ◦ cable length: 40 cm ◦ weight: 2600g



LEDA3005WW-BP



5 410329 601775



OUTDOOR FLOODLIGHT - 50 W EPISTAR CHIP - 3000 K

PEREL®

FR PROJECTEUR LED D'EXTÉRIEUR - PUCE EPISTAR 50 W - 3000 K
NL LED-SCHIJNWERPER VOOR BUITENSHUIS - 50 W EPISTAR CHIP - 3000 K
DE LED-STRAHLER FÜR DEN AUSSENBEREICH - 50 W EPISTAR CHIP - 3000 K
ES PROYECTOR LED PARA EXTERIORES - 50 W EPISTAR CHIP - 3000 K

floodlight for commercial or residential use • die-cast aluminium housing with tempered glass
• ribbed for maximum heat dissipation • with adjustable bracket • suited for outdoor use
(IP65) • with 40 cm unterminated cable

body colour: grey • electrical data: ◦ power LED module: 1 * 50 W COB Epistar ◦ total
nominal power: 52 W ◦ nominal voltage driver: 230 VAC ◦ nominal voltage LED module: 30-
36 V ◦ power factor: 0.9 ◦ energy consumption kWh/1000 h: 52 ◦ cable: H05RN-F 3G1.0 -
40 cm • light technical data: ◦ colour: warm white ◦ colour temperature: 3000 K ◦ beam
angle: 120° ◦ luminous flux: 3000 lm ◦ colour rendering index: 70 ◦ starting time: < 0.5 s
◦ warm-up time (60 %): < 1 s • lifespan: ◦ nominal life time: 30 000 h ◦ number of switching
cycles: 15 000 • dimensions & weight: ◦ dimensions (W x H x D): ◦ spot: 285 x 235 x 138 mm
◦ incl. bracket: - ◦ cable length: 40 cm ◦ weight: 2500g



LEDA3005WW-G



5 410329 592257



OUTDOOR LED FLOODLIGHT WITH PIR SENSOR - 50 W EPISTAR CHIP - 3000 K



FR: PROJECTEUR LED D'EXTÉRIEUR AVEC CAPTEUR PIR - PUCE EPISTAR 50 W - 3000 K
 NL: LED-SCHIJNWERPER VOOR BUITENSHUIS MET PIR-SENSOR - 50 W EPISTAR CHIP - 3000 K
 DE: LED-STRAHLER FÜR DEN AUSSENBEREICH MIT PIR-SENSOR - 50 W EPISTAR CHIP - 3000 K
 ES: PROYECTOR LED PARA EXTERIORES CON SENSOR PIR - 50 W EPISTAR CHIP - 3000 K

floodlight for commercial or residential use ● die-cast aluminium housing with tempered glass
 ● ribbed for maximum heat dissipation ● with adjustable bracket ● with 180° pyroelectric infrared (PIR) motion sensor ● suited for outdoor use (floodlight - IP65, PIR sensor - IP44)
 ● with 40 cm unterminated cable

body colour: grey ● electrical data: ○ power LED module: 1 * 50 W COB Epistar ○ total nominal power: 54 W ○ nominal voltage driver: 230 VAC ○ nominal voltage LED module: 30-36 V ○ power factor: 0.9 ○ energy consumption kWh/1000 h: 54 ○ cable: H05RN-F 3G1.0 - 40 cm ● light technical data: ○ colour: warm white ○ colour temperature: 3000 K ○ beam angle: 120° ○ luminous flux: 3000 lm ○ colour rendering index: 70 ○ starting time: < 0.5 s ○ warm-up time (60 %): < 1 s ● lifespan: ○ nominal life time: 30 000 h ○ number of switching cycles: 15 000 ● dimensions & weight: ○ dimensions (W x H x D): ○ spot: 285 x 235 x 138 mm ○ incl. bracket: - ○ cable length: 40 cm ○ weight: 2600g



LEDA3005WW-GP



5 410329 601782



OUTDOOR FLOODLIGHT - 10 W EPISTAR CHIP - 6500 K



FR: PROJECTEUR LED D'EXTÉRIEUR - PUCE EPISTAR 10 W - 6500 K
 NL: LED-SCHIJNWERPER VOOR BUITENSHUIS - 10 W EPISTAR CHIP - 6500 K
 DE: LED-STRAHLER FÜR DEN AUSSENBEREICH - 10 W EPISTAR CHIP - 6500 K
 ES: PROYECTOR LED PARA EXTERIORES - 10 W EPISTAR CHIP - 6500 K

floodlight for commercial or residential use ● die-cast aluminium housing with tempered glass
 ● ribbed for maximum heat dissipation ● with adjustable bracket ● suited for outdoor use (IP65) ● with 30 cm unterminated cable

power supply: 230 VAC ● max. power consumption: 11.5 W ● LED: 10 W COB Epistar ● body colour: white ● colour temperature: 6500 K ● beam angle: 120° ● luminous flux: 600 lm ● cable: H05RN-F 3G1.0, 30 cm ● dimensions (W x H x D): 114 x 85 x 85 mm ● weight: 450 g



LEDA301CW-W



5 410329 567552



OUTDOOR FLOODLIGHT - 20 W EPISTAR CHIP - 6500 K



FR: PROJECTEUR LED D'EXTÉRIEUR - PUCE EPISTAR 20 W - 6500 K
 NL: LED-SCHIJNWERPER VOOR BUITENSHUIS - 20 W EPISTAR CHIP - 6500 K
 DE: LED-STRAHLER FÜR DEN AUSSENBEREICH - 20 W EPISTAR CHIP - 6500 K
 ES: PROYECTOR LED PARA EXTERIORES - 20 W EPISTAR CHIP - 6500 K

floodlight for commercial or residential use ● die-cast aluminium housing with tempered glass
 ● ribbed for maximum heat dissipation ● with adjustable bracket ● suited for outdoor use (IP65) ● with 30 cm unterminated cable

power supply: 230 VAC ● max. power consumption: 22.5 W ● LED: 20 W COB Epistar ● body colour: grey ● colour temperature: 6500 K ● beam angle: 120° ● luminous flux: 1200 lm ● cable: H05RN-F 3G1.0, 30 cm ● dimensions (W x H x D): 181 x 140 x 105 mm ● weight: 988 g



LEDA302CW-G



5 410329 567576



OUTDOOR FLOODLIGHT - 20 W EPISTAR CHIP - 3000 K

PEREL®

FR PROJECTEUR LED D'EXTÉRIEUR - PUCE EPISTAR 20 W - 3000 K
NL LED-SCHIJNWERPER VOOR BUITENSHUIS - 20 W EPISTAR CHIP - 3000 K
DE LED-STRAHLER FÜR DEN AUßENBEREICH - 20 W EPISTAR CHIP - 3000 K
ES PROYECTOR LED PARA EXTERIORES - 20 W EPISTAR CHIP - 3000 K

floodlight for commercial or residential use • die-cast aluminium housing with tempered glass
• ribbed for maximum heat dissipation • with adjustable bracket • suited for outdoor use (IP65) • with 30 cm unterminated cable

power supply: 230 VAC • max. power consumption: 22.5 W • LED: 20 W COB Epistar
• body colour: grey • colour temperature: 3000 K • beam angle: 120° • luminous flux: 1200 lm • cable: H05RN-F 3G1.0, 30 cm • dimensions (W x H x D): 181 x 140 x 105 mm
• weight: 988 g



LEDA302WW-G



5 410329 567620



OUTDOOR LED FLOODLIGHT WITH PIR SENSOR - 20 W EPISTAR CHIP - 3000 K

PEREL®

FR PROJECTEUR LED D'EXTÉRIEUR AVEC CAPTEUR PIR - PUCE EPISTAR 20 W - 3000 K
NL LED-SCHIJNWERPER VOOR BUITENSHUIS MET PIR-SENSOR - 20 W EPISTAR CHIP - 3000 K
DE LED-STRAHLER MIT PIR-BEWEGUNGSMELDER FÜR DEN AUßENBEREICH - 20 W EPISTAR CHIP - 3000 K
ES PROYECTOR LED CON SENSOR PIR PARA EXTERIORES - 20 W EPISTAR CHIP - 3000 K

floodlight for commercial or residential use • die-cast aluminium housing with tempered glass
• ribbed for maximum heat dissipation • with adjustable bracket • with 180° pyroelectric infrared (PIR) motion sensor • suited for outdoor use (floodlight - IP65, PIR sensor - IP44)
• with 30 cm unterminated cable

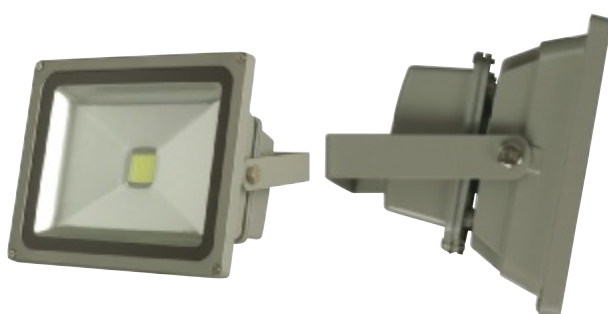
power supply: 230 VAC • max. power consumption: 22.5 W • LED: 20 W COB Epistar
• body colour: white • colour temperature: 3000 K • beam angle: 120° • luminous flux: 1200 lm • cable: H05RN-F 3G1.0, 30 cm • dimensions (W x H x D): 181 x 210 x 105 mm
• weight: 1150 g



LEDA302WW-WP



5 410329 567590



OUTDOOR FLOODLIGHT - 30 W EPISTAR CHIP - 3000 K

PEREL®

FR PROJECTEUR LED D'EXTÉRIEUR - PUCE EPISTAR 30 W - 3000 K
NL LED-SCHIJNWERPER VOOR BUITENSHUIS - 30 W EPISTAR CHIP - 3000 K
DE LED-STRAHLER FÜR DEN AUßENBEREICH - 30 W EPISTAR CHIP - 3000 K
ES PROYECTOR LED PARA EXTERIORES - 30 W EPISTAR CHIP - 3000 K

floodlight for commercial or residential use • die-cast aluminium housing with tempered glass
• ribbed for maximum heat dissipation • with adjustable bracket • suited for outdoor use (IP65) • with 30 cm unterminated cable

power supply: 230 VAC • max. power consumption: 33 W • LED: 30 W COB Epistar • body colour: grey • colour temperature: 3000 K • beam angle: 120° • luminous flux: 1800 lm
• cable: H05RN-F 3G0,75, 30 cm • dimensions (W x H x D): 226 x 187 x 122 mm • weight: 1550 g



LEDA303WW-G



5 410329 567606



**OUTDOOR PRO FLOODLIGHT -
10 W EPISTAR CHIP - 6500 K**



FR: PROJECTEUR LED PROFESSIONNEL POUR L'EXTÉRIEUR - 10 W EPISTAR CHIP - 6500 K

NL: PROFESSIONELE LED-SCHIJNWERPER VOOR BUITENSHUIS - 10 W EPISTAR CHIP - 6500 K

DE: PROFESSIONELLER LED-FLUTER FÜR DEN AUßENBEREICH - 10 W EPISTAR CHIP - 6500 K

ES: PROYECTOR LED PROFESIONAL PARA EXTERIORES - 10 W EPISTAR CHIP - 6500 K

floodlight for commercial or residential use, monument entries or façades • die-cast aluminium housing with tempered glass • ribbed for maximum heat dissipation • with adjustable bracket • suited for outdoor use (IP65)

power supply: 85-265 VAC / 50-60 Hz • max. power: 10 W • LED: 10 W 105LM/W Epistar chip • colour temperature: 6500 K • beam angle: 90° • luminous flux: 680 lm • light efficiency: 58 lm/W • dimensions: 185 x 165 x 55 mm • weight: 1.15 kg



LEDA308



5 410329 581718



**OUTDOOR PRO FLOODLIGHT -
20 W EPISTAR CHIP - 6500 K**



FR: PROJECTEUR LED PROFESSIONNEL POUR L'EXTÉRIEUR - 20 W EPISTAR CHIP - 6500 K

NL: PROFESSIONELE LED-SCHIJNWERPER VOOR BUITENSHUIS - 20 W EPISTAR CHIP - 6500 K

DE: PROFESSIONELLER LED-FLUTER FÜR DEN AUßENBEREICH - 20 W EPISTAR CHIP - 6500 K

ES: PROYECTOR LED PROFESIONAL PARA EXTERIORES - 20 W EPISTAR CHIP - 6500 K

floodlight for commercial or residential use, monument entries or façades • die-cast aluminium housing with tempered glass • ribbed for maximum heat dissipation • with adjustable bracket • suited for outdoor use (IP65)

power supply: 85-265 VAC / 50-60 Hz • max. power: 20 W • LED: 20 W 105LM/W Epistar chip • colour temperature: 6500 K • beam angle: 90° • luminous flux: 1355 lm • light efficiency: 58 lm/W • dimensions: 185 x 165 x 55 mm • weight: 1.15 kg



LEDA309



5 410329 581701



**OUTDOOR PRO FLOODLIGHT -
30 W EPISTAR CHIP - 6500 K**



FR: PROJECTEUR LED PROFESSIONNEL POUR L'EXTÉRIEUR - 30 W EPISTAR CHIP - 6500 K

NL: PRO SCHIJNWERPER VOOR BUITENSHUIS - 30 W EPISTAR CHIP - 6500 K

DE: PROFESSIONELLER LED-FLUTER FÜR DEN AUßENBEREICH - 30 W EPISTAR CHIP - 6500 K

ES: PROYECTOR LED PROFESIONAL PARA EXTERIORES - 30 W EPISTAR CHIP - 6500 K

floodlight for commercial or residential use, monument entries or façades • die-cast aluminium housing with tempered glass • ribbed for maximum heat dissipation • with adjustable bracket • suited for outdoor use (IP65)

power supply: 85-265 VAC / 50-60 Hz • max. power: 30 W • LED: 30 W 105LM/W Epistar chip • colour temperature: 6500 K • beam angle: 90° • luminous flux: 2043 lm • light efficiency: 61 lm/W • dimensions: 290 x 250 x 80 mm • weight: 2.85 kg



LEDA310



5 410329 470340



OUTDOOR PRO FLOODLIGHT - 50 W EPISTAR CHIP - 6500 K



FR PROJECTEUR LED PROFESSIONNEL POUR L'EXTÉRIEUR - 50 W
EPISTAR CHIP - 6500 K

NL PROFESSIONELE LED-SCHIJNWERPER - 50 W EPISTAR CHIP - 6500 K

DE PROFESSIONELLER LED-FLUTER FÜR DEN AUßENBEREICH - 50 W EPISTAR CHIP -
6500 K

ES PROYECTOR LED PROFESIONAL PARA EXTERIORES - 50 W EPISTAR CHIP - 6500 K

floodlight for commercial or residential use, monument entries or façades • die-cast aluminium housing with tempered glass • ribbed for maximum heat dissipation • with adjustable bracket • suited for outdoor use (IP65)

power supply: 85-265 VAC, 50-60 Hz • max. power: 50 W • LED: 50 W 105LM/W Epistar chip • colour temperature: 6500 K • beam angle: 90° • luminous flux: 3275 lm • light efficiency: 63 lm/W • dimensions: 350 x 325 x 110 mm • weight: 5 kg



LEDA311



5 410329 470357



OUTDOOR PRO FLOODLIGHT - 50 W EPISTAR CHIP - 3800 K - BLACK



FR PROJECTEUR LED PROFESSIONNEL POUR L'EXTÉRIEUR - 50 W
EPISTAR CHIP - 3800 K - NOIR

NL PROFESSIONELE LED-SCHIJNWERPER VOOR BUITENSHUIS - 50 W EPISTAR CHIP -
3800 K - ZWART

DE PROFESSIONELLER LED-FLUTER FÜR DEN AUßENBEREICH - 50 W EPISTAR CHIP -
3800 K - SCHWARZ

ES PROYECTOR LED PROFESIONAL PARA EXTERIORES - 50 W EPISTAR CHIP - 3800 K -
COLOR NEGRO

floodlight for commercial or residential use, monument entries or façades • die-cast aluminium housing with tempered glass • ribbed for maximum heat dissipation • with adjustable bracket • suited for outdoor use (IP65)

housing colour: black • power supply: 85-265 VAC, 50-60 Hz • max. power: 50 W • LED: 50 W 105LM/W Epistar chip • colour temperature: 3800 K • beam angle: 90° • luminous flux: 3275 lm • light efficiency: 63 lm/W • dimensions: 350 x 325 x 110 mm • weight: 5 kg



LEDA311B



5 410329 583309



OUTDOOR PRO FLOODLIGHT - 100 W EPISTAR CHIP - 6500 K



FR PROJECTEUR LED PROFESSIONNEL POUR L'EXTÉRIEUR - 100 W
EPISTAR CHIP - 6500 K

NL PROFESSIONELE LED-SCHIJNWERPER - 100 W EPISTAR CHIP - 6500 K

DE PROFESSIONELLER LED-FLUTER FÜR DEN AUßENBEREICH - 100 W EPISTAR CHIP -
6500 K

ES PROYECTOR LED PROFESIONAL PARA EXTERIORES - 100 W EPISTAR CHIP - 6500 K

floodlight for commercial or residential use, monument entries or façades • die-cast aluminium housing with tempered glass • ribbed for maximum heat dissipation • with adjustable bracket • suited for outdoor use (IP65)

power supply: 85-265 VAC, 50-60 Hz • max. power: 100 W • LED: 100 W 105LM/W Epistar chip • colour temperature: 6500 K • beam angle: 90° • luminous flux: 6564 lm • light efficiency: 65 lm/W • dimensions: 420 x 380 x 130 mm • weight: 6.85 kg



LEDA312



5 410329 470364



**OUTDOOR PRO FLOODLIGHT - 100 W
EPISTAR CHIP - 3800 K - BLACK**



FR: PROJECTEUR LED PROFESSIONNEL POUR L'EXTÉRIEUR - 100 W EPISTAR CHIP - 3800 K - NOIR

NL: PROFESSIONELE LED-SCHIJNWERPER VOOR BUITENSHUIS - 100 W EPISTAR CHIP - 3800 K - ZWART

DE: PROFESSIONELLER LED-FLUTER FÜR DEN AUßENBEREICH - 100 W EPISTAR CHIP - 3800 K - SCHWARZ

ES: PROYECTOR LED PROFESIONAL PARA EXTERIORES - 100 W EPISTAR CHIP - 3800 K - COLOR NEGRO

floodlight for commercial or residential use, monument entries or façades • die-cast aluminium housing with tempered glass • ribbed for maximum heat dissipation • with adjustable bracket • suited for outdoor use (IP65)

power supply: 85-265 VAC, 50-60 Hz • max. power: 100 W • LED: 100 W 105LM/W Epistar chip • colour temperature: 3800 K • beam angle: 90° • luminous flux: 6564 lm • light efficiency: 65 lm/W • dimensions: 420 x 380 x 130 mm • weight: 6.85 kg



LEDA312B



5 410329 583316



**OUTDOOR PRO FLOODLIGHT - 200 W
EPISTAR CHIP - 3800 K - BLACK**



FR: PROJECTEUR LED PROFESSIONNEL POUR L'EXTÉRIEUR - 200 W EPISTAR CHIP - 3800 K - NOIR

NL: PROFESSIONELE LED-SCHIJNWERPER VOOR BUITENSHUIS - 200 W EPISTAR CHIP - 3800 K - ZWART

DE: PROFESSIONELLER LED-FLUTER FÜR DEN AUßENBEREICH - 200 W EPISTAR CHIP - 3800 K - SCHWARZ

ES: PROYECTOR LED PROFESIONAL PARA EXTERIORES - 200 W EPISTAR CHIP - 3800 K - COLOR NEGRO

floodlight for commercial or residential use, monument entries or façades • die-cast aluminium housing with tempered glass • ribbed for maximum heat dissipation • with adjustable bracket • suited for outdoor use (IP65)

power supply: 85-265 VAC, 50-60 Hz • max. power: 200 W • LED: 4 x 50 W 105LM/W Epistar chip • colour temperature: 3800 K • beam angle: 90° • luminous flux: 14475 lm • light efficiency: 72 lm/W • dimensions: 550 x 500 x 150 mm • weight: 13.5 kg



LEDA313B



5 410329 583323



**OUTDOOR PRO FLOODLIGHT -
10 W EPISTAR CHIP - 6500 K**



FR: PROJECTEUR LED D'EXTÉRIEUR PRO - PUCE EPISTAR 10 W - 6500 K

NL: PRO LED-SCHIJNWERPER VOOR BUITENSHUIS - 10 W EPISTAR CHIP - 6500 K

DE: PROFESSIONELLER LED-FLUTER FÜR DEN AUßENBEREICH - 10 W EPISTAR CHIP - 6500 K

ES: PROYECTOR LED PROFESIONAL PARA EXTERIORES - 10 W EPISTAR CHIP - 6500 K

New: die-cast housing.

die-cast aluminium housing with tempered glass • ribbed for maximum heat dissipation • with adjustable bracket • suited for outdoor use (IP65)

power supply: 85-265 VAC, 50-60 Hz • max. power: 12.5 W • LED: 10 W COB Epistar chip • colour temperature: 6500 K • beam angle: 90° • luminous flux: 810 lm • dimensions: 180 x 180 x 190 mm • weight: 1,4kg



LEDA315



5 410329 598112



OUTDOOR PRO FLOODLIGHT - 30 W EPISTAR CHIP - 6500 K



FR PROJECTEUR LED D'EXTÉRIEUR PRO - PUCE EPISTAR 30 W - 6500 K

NL PRO LED-SCHIJNWERPER VOOR BUITENSHUIS - 30 W EPISTAR CHIP - 6500 K

DE PROFESSIONELLER LED-FLUTER FÜR DEN AUßENBEREICH - 30 W EPISTAR CHIP - 6500 K

ES PROYECTOR LED PROFESIONAL PARA EXTERIORES - 30 W EPISTAR CHIP - 6500 K

New: die-cast housing.

die-cast aluminium housing with tempered glass • ribbed for maximum heat dissipation • with adjustable bracket • suited for outdoor use (IP65)

power supply: 85-265 VAC, 50-60 Hz • max. power: 32.2 W • LED: 30 W COB Epistar chip
• colour temperature: 6500 K • beam angle: 90° • luminous flux: 2654.1 lm • dimensions:
240 x 240 x 250 mm • weight: 2.7 kg



LEDA316



5 410329 598129



OUTDOOR PRO FLOODLIGHT - 50 W EPISTAR CHIP - 6500 K



FR PROJECTEUR LED D'EXTÉRIEUR PRO - PUCE EPISTAR 50 W - 6500 K

NL PRO LED-SCHIJNWERPER VOOR BUITENSHUIS - 50 W EPISTAR CHIP - 6500 K

DE PROFESSIONELLER LED-FLUTER FÜR DEN AUßENBEREICH - 50 W EPISTAR CHIP - 6500 K

ES PROYECTOR LED PROFESIONAL PARA EXTERIORES - 50 W EPISTAR CHIP - 6500 K

New: die-cast housing.

die-cast aluminium housing with tempered glass • ribbed for maximum heat dissipation • with adjustable bracket • suited for outdoor use (IP65)

power supply: 85-265 VAC, 50-60 Hz • max. power: 52.4 W • LED: 50 W COB Epistar chip
• colour temperature: 6500 K • beam angle: 90° • luminous flux: 4389.1 lm • dimensions:
300 x 300 x 320 mm • weight: 4,7kg



LEDA317



5 410329 598136



DESIGN LED FLOODLIGHT - 10 W, COLD WHITE



FR PROJECTEUR LED DESIGN - 10 W, BLANC FROID

NL DESIGN LED-SCHIJNWERPER - 10 W, KOUDWIT

DE DESIGN LED-STRAHLER - 10 W, KALTWEIß

ES PROYECTOR LED DE DISEÑO - 10 W, COLOR BLANCO FRÍO

floodlight for commercial or residential use • die-cast aluminium housing with tempered glass
• ultra-thin design • with adjustable bracket • with 50 cm unterminated cable • suited for
outdoor use (IP65) • energy efficiency index (EEI): A

body colour: matte black • electrical data: ◦ power LED module: 8 x SMD 1.21 W LED ◦ total
nominal power: 12 W ◦ nominal voltage driver: 230 VAC ◦ nominal voltage LED module: 31 V
◦ power factor: 0.56 ◦ energy consumption kWh/1000 h: 12 ◦ cable: H05RN-F 3G1.0 - 50 cm
• light technical data: ◦ colour: cold white ◦ colour temperature: 6500 K ◦ beam angle:
105° ◦ luminous flux: 655 lm ◦ colour rendering index: 81 ◦ starting time: < 0.5 s ◦ warm-up
time (60 %): < 1 s • lifespan: ◦ nominal life time: 36 000 h ◦ number of switching cycles:
18 000 • dimensions & weight: ◦ dimensions (W x H x D): = spot: 130 x 95 x 25 mm = incl.
bracket: 152 x 95 x 82 mm ◦ cable length: ± 50 cm ◦ weight: 420 g



► May not be sold in Ireland, United Kingdom



LEDA401CW-B



5 410329 591649



DESIGN LED FLOODLIGHT - 10 W, COLD WHITE

PEREL®

- FR PROJECTEUR LED DESIGN - 10 W, BLANC FROID
- NL DESIGN LED-SCHIJNWERPER - 10 W, KOUDWIT
- DE DESIGN LED-STRAHLER - 10 W, KALTWEIß
- ES PROYECTOR LED DE DISEÑO - 10 W, COLOR BLANCO FRÍO

floodlight for commercial or residential use • die-cast aluminium housing with tempered glass
• ultra-thin design • with adjustable bracket • with 50 cm unterminated cable • suited for outdoor use (IP65) • energy efficiency index (EEI): A

body colour: silver grey • electrical data: ◦ power LED module: 8 x SMD 1.21 W LED ◦ total nominal power: 12 W ◦ nominal voltage driver: 230 VAC ◦ nominal voltage LED module: 31 V ◦ power factor: 0.56 ◦ energy consumption kWh/1000 h: 12 ◦ cable: H05RN-F 3G1.0 - 50 cm
• light technical data: ◦ colour: cold white ◦ colour temperature: 6500 K ◦ beam angle: 105° ◦ luminous flux: 655 lm ◦ colour rendering index: 81 ◦ starting time: < 0.5 s ◦ warm-up time (60 %): < 1 s • lifespan: ◦ nominal life time: 36 000 h ◦ number of switching cycles: 18 000 • dimensions & weight: ◦ dimensions (W x H x D): ◦ spot: 130 x 95 x 25 mm ◦ incl. bracket: 152 x 95 x 82 mm ◦ cable length: ± 50 cm ◦ weight: 420 g



► May not be sold in Ireland, United Kingdom



LEDA401CW-SG



5 410329 585129



DESIGN LED FLOODLIGHT - 10 W, COLD WHITE

PEREL®

- FR PROJECTEUR LED DESIGN - 10 W, BLANC FROID
- NL DESIGN LED-SCHIJNWERPER - 10 W, KOUDWIT
- DE DESIGN LED-STRAHLER - 10 W, KALTWEIß
- ES PROYECTOR LED DE DISEÑO - 10 W, COLOR BLANCO FRÍO

floodlight for commercial or residential use • die-cast aluminium housing with tempered glass
• ultra-thin design • with adjustable bracket • with 50 cm unterminated cable • suited for outdoor use (IP65) • energy efficiency index (EEI): A

body colour: white • electrical data: ◦ power LED module: 8 x SMD 1.21 W LED ◦ total nominal power: 12 W ◦ nominal voltage driver: 230 VAC ◦ nominal voltage LED module: 31 V ◦ power factor: 0.56 ◦ energy consumption kWh/1000 h: 12 ◦ cable: H05RN-F 3G1.0 - 50 cm
• light technical data: ◦ colour: cold white ◦ colour temperature: 6500 K ◦ beam angle: 105° ◦ luminous flux: 655 lm ◦ colour rendering index: 81 ◦ starting time: < 0.5 s ◦ warm-up time (60 %): < 1 s • lifespan: ◦ nominal life time: 36 000 h ◦ number of switching cycles: 18 000 • dimensions & weight: ◦ dimensions (W x H x D): ◦ spot: 130 x 95 x 25 mm ◦ incl. bracket: 152 x 95 x 82 mm ◦ cable length: ± 50 cm ◦ weight: 420 g



► May not be sold in Ireland, United Kingdom



LEDA401CW-W



5 410329 585112



DESIGN LED FLOODLIGHT - 10 W, NEUTRAL WHITE

PEREL®

- FR PROJECTEUR LED DESIGN - 10 W, BLANC NEUTRE
- NL DESIGN LED-SCHIJNWERPER - 10 W, NEUTRAALWIT
- DE DESIGN LED-STRAHLER - 10 W, NEUTRALWEIß
- ES PROYECTOR LED DE DISEÑO - 10 W, COLOR BLANCO NEUTRO

floodlight for commercial or residential use • die-cast aluminium housing with tempered glass
• ultra-thin design • with adjustable bracket • with 50 cm unterminated cable • suited for outdoor use (IP65) • energy efficiency index (EEI): A

body colour: matte black • electrical data: ◦ power LED module: 8 x SMD 1.21 W LED ◦ total nominal power: 12 W ◦ nominal voltage driver: 230 VAC ◦ nominal voltage LED module: 31 V ◦ power factor: 0.56 ◦ energy consumption kWh/1000 h: 12 ◦ cable: H05RN-F 3G1.0 - 50 cm
• light technical data: ◦ colour: neutral white ◦ colour temperature: 4000 K ◦ beam angle: 105° ◦ luminous flux: 655 lm ◦ colour rendering index: 81 ◦ starting time: < 0.5 s ◦ warm-up time (60 %): < 1 s • lifespan: ◦ nominal life time: 36 000 h ◦ number of switching cycles: 18 000 • dimensions & weight: ◦ dimensions (W x H x D): ◦ spot: 130 x 95 x 25 mm ◦ incl. bracket: 152 x 95 x 82 mm ◦ cable length: ± 50 cm ◦ weight: 420 g



► May not be sold in Ireland, United Kingdom



LEDA401NW-B



5 410329 591656



DESIGN LED FLOODLIGHT - 10 W, NEUTRAL WHITE

PEREL®

FR PROJECTEUR LED DESIGN - 10 W, BLANC NEUTRE
NL DESIGN LED-SCHIJNWERPER - 10 W, NEUTRAALWIT
DE DESIGN LED-STRAHLER - 10 W, NEUTRALWEIß
ES PROYECTOR LED DE DISEÑO - 10 W, COLOR BLANCO NEUTRO

floodlight for commercial or residential use • die-cast aluminium housing with tempered glass
• ultra-thin design • with adjustable bracket • with 50 cm unterminated cable • suited for outdoor use (IP65) • energy efficiency index (EEI): A

body colour: silver grey • electrical data: ◦ power LED module: 8 x SMD 1.21 W LED ◦ total nominal power: 12 W ◦ nominal voltage driver: 230 VAC ◦ nominal voltage LED module: 31 V ◦ power factor: 0.56 ◦ energy consumption kWh/1000 h: 12 ◦ cable: H05RN-F 3G1.0 - 50 cm
• light technical data: ◦ colour: neutral white ◦ colour temperature: 4000 K ◦ beam angle: 105° ◦ luminous flux: 655 lm ◦ colour rendering index: 81 ◦ starting time: < 0.5 s ◦ warm-up time (60 %): < 1 s • lifespan: ◦ nominal life time: 36 000 h ◦ number of switching cycles: 18 000 • dimensions & weight: ◦ dimensions (W x H x D): ◦ spot: 130 x 95 x 25 mm ◦ incl. bracket: 152 x 95 x 82 mm ◦ cable length: ± 50 cm ◦ weight: 420 g



► May not be sold in Ireland, United Kingdom



LEDA401NW-SG



5 410329 585082



DESIGN LED FLOODLIGHT - 10 W, NEUTRAL WHITE

PEREL®

FR PROJECTEUR LED DESIGN - 10 W, BLANC NEUTRE
NL DESIGN LED-SCHIJNWERPER - 10 W, NEUTRAALWIT
DE DESIGN LED-STRAHLER - 10 W, NEUTRALWEIß
ES PROYECTOR LED DE DISEÑO - 10 W, COLOR BLANCO NEUTRO

floodlight for commercial or residential use • die-cast aluminium housing with tempered glass
• ultra-thin design • with adjustable bracket • with 50 cm unterminated cable • suited for outdoor use (IP65) • energy efficiency index (EEI): A

body colour: white • electrical data: ◦ power LED module: 8 x SMD 1.21 W LED ◦ total nominal power: 12 W ◦ nominal voltage driver: 230 VAC ◦ nominal voltage LED module: 31 V ◦ power factor: 0.56 ◦ energy consumption kWh/1000 h: 12 ◦ cable: H05RN-F 3G1.0 - 50 cm
• light technical data: ◦ colour: neutral white ◦ colour temperature: 4000 K ◦ beam angle: 105° ◦ luminous flux: 655 lm ◦ colour rendering index: 81 ◦ starting time: < 0.5 s ◦ warm-up time (60 %): < 1 s • lifespan: ◦ nominal life time: 36 000 h ◦ number of switching cycles: 18 000 • dimensions & weight: ◦ dimensions (W x H x D): ◦ spot: 130 x 95 x 25 mm ◦ incl. bracket: 152 x 95 x 82 mm ◦ cable length: ± 50 cm ◦ weight: 420 g



► May not be sold in Ireland, United Kingdom



LEDA401NW-W



5 410329 585099



DESIGN LED FLOODLIGHT - 10 W, WARM WHITE

PEREL®

FR PROJECTEUR LED DESIGN - 10 W, BLANC CHAUD
NL DESIGN LED-SCHIJNWERPER - 10 W, WARMWIT
DE DESIGN LED-STRAHLER - 10 W, WARMWEIß
ES PROYECTOR LED DE DISEÑO - 10 W, COLOR BLANCO CÁLIDO

floodlight for commercial or residential use • die-cast aluminium housing with tempered glass
• ultra-thin design • with adjustable bracket • with 50 cm unterminated cable • suited for outdoor use (IP65) • energy efficiency index (EEI): A

body colour: matte black • electrical data: ◦ power LED module: 8 x SMD 1.21 W LED ◦ total nominal power: 12 W ◦ nominal voltage driver: 230 VAC ◦ nominal voltage LED module: 31 V ◦ power factor: 0.56 ◦ energy consumption kWh/1000 h: 12 ◦ cable: H05RN-F 3G1.0 - 50 cm
• light technical data: ◦ colour: warm white ◦ colour temperature: 3000 K ◦ beam angle: 105° ◦ luminous flux: 655 lm ◦ colour rendering index: 81 ◦ starting time: < 0.5 s ◦ warm-up time (60 %): < 1 s • lifespan: ◦ nominal life time: 36 000 h ◦ number of switching cycles: 18 000 • dimensions & weight: ◦ dimensions (W x H x D): ◦ spot: 130 x 95 x 25 mm ◦ incl. bracket: 152 x 95 x 82 mm ◦ cable length: ± 50 cm ◦ weight: 420 g



► May not be sold in Ireland, United Kingdom



LEDA401WW-B



5 410329 591663



**DESIGN LED FLOODLIGHT
- 10 W, WARM WHITE**



FR PROJECTEUR LED DESIGN - 10 W, BLANC CHAUD
NL DESIGN LED-SCHIJNWERPER - 10 W, WARMWIT
DE DESIGN LED-STRAHLER - 10 W, WARMWEIß
ES PROYECTOR LED DE DISEÑO - 10 W, COLOR BLANCO CÁLIDO

floodlight for commercial or residential use • die-cast aluminium housing with tempered glass
• ultra-thin design • with adjustable bracket • with 50 cm unterminated cable • suited for outdoor use (IP65) • energy efficiency index (EEI): A

body colour: silver grey • electrical data: ◦ power LED module: 8 x SMD 1.21 W LED ◦ total nominal power: 12 W ◦ nominal voltage driver: 230 VAC ◦ nominal voltage LED module: 31 V ◦ power factor: 0.56 ◦ energy consumption kWh/1000 h: 12 ◦ cable: H05RN-F 3G1.0 - 50 cm
• light technical data: ◦ colour: warm white ◦ colour temperature: 3000 K ◦ beam angle: 105° ◦ luminous flux: 655 lm ◦ colour rendering index: 81 ◦ starting time: < 0.5 s ◦ warm-up time (60 %): < 1 s • lifespan: ◦ nominal life time: 36 000 h ◦ number of switching cycles: 18 000 • dimensions & weight: ◦ dimensions (W x H x D): ◦ spot: 130 x 95 x 25 mm ◦ incl. bracket: 152 x 95 x 82 mm ◦ cable length: ± 50 cm ◦ weight: 420 g



► May not be sold in Ireland, United Kingdom



LEDA401WW-SG



5 410329 585068



**DESIGN LED FLOODLIGHT
- 10 W, WARM WHITE**



FR PROJECTEUR LED DESIGN - 10 W, BLANC CHAUD
NL DESIGN LED-SCHIJNWERPER - 10 W, WARMWIT
DE DESIGN LED-STRAHLER - 10 W, WARMWEIß
ES PROYECTOR LED DE DISEÑO - 10 W, COLOR BLANCO CÁLIDO

floodlight for commercial or residential use • die-cast aluminium housing with tempered glass
• ultra-thin design • with adjustable bracket • with 50 cm unterminated cable • suited for outdoor use (IP65) • energy efficiency index (EEI): A

body colour: white • electrical data: ◦ power LED module: 8 x SMD 1.21 W LED ◦ total nominal power: 12 W ◦ nominal voltage driver: 230 VAC ◦ nominal voltage LED module: 31 V ◦ power factor: 0.56 ◦ energy consumption kWh/1000 h: 12 ◦ cable: H05RN-F 3G1.0 - 50 cm
• light technical data: ◦ colour: warm white ◦ colour temperature: 3000 K ◦ beam angle: 105° ◦ luminous flux: 655 lm ◦ colour rendering index: 81 ◦ starting time: < 0.5 s ◦ warm-up time (60 %): < 1 s • lifespan: ◦ nominal life time: 36 000 h ◦ number of switching cycles: 18 000 • dimensions & weight: ◦ dimensions (W x H x D): ◦ spot: 130 x 95 x 25 mm ◦ incl. bracket: 152 x 95 x 82 mm ◦ cable length: ± 50 cm ◦ weight: 420 g



► May not be sold in Ireland, United Kingdom



LEDA401WW-W



5 410329 584849



**DESIGN LED FLOODLIGHT
- 20 W, COLD WHITE**



FR PROJECTEUR LED DESIGN - 20 W, BLANC FROID
NL DESIGN LED-SCHIJNWERPER - 20 W, KOUDWIT
DE DESIGN LED-STRAHLER - 20 W, KALTWEIß
ES PROYECTOR LED DE DISEÑO - 20 W, COLOR BLANCO FRÍO

floodlight for commercial or residential use • die-cast aluminium housing with tempered glass
• ultra-thin design • with adjustable bracket • with 50 cm unterminated cable • suited for outdoor use (IP65) • energy efficiency index (EEI): A

body colour: matte black • electrical data: ◦ power LED module: 16 x SMD 1.3W LED ◦ total nominal power: 22 W ◦ nominal voltage driver: 230 VAC ◦ nominal voltage LED module: 32.5 V ◦ power factor: 0.59 ◦ energy consumption kWh/1000 h: 22 ◦ cable: H05RN-F 3G1.0 - 50 cm
• light technical data: ◦ colour: cold white ◦ colour temperature: 6500 K ◦ beam angle: 100° ◦ luminous flux: 1400 lm ◦ colour rendering index: 83 ◦ starting time: < 0.5 s ◦ warm-up time (60 %): < 1 s • lifespan: ◦ nominal life time: 36 000 h ◦ number of switching cycles: 18 000 • dimensions & weight: ◦ dimensions (W x H x D): ◦ spot: 185 x 135 x 27 mm ◦ incl. bracket: 213 x 135 x 105 mm ◦ cable length: ± 50 cm ◦ weight: 900 g



► May not be sold in Ireland, United Kingdom



LEDA402CW-B



5 410329 593933



DESIGN LED FLOODLIGHT - 20 W, COLD WHITE

PEREL®

FR PROJECTEUR LED DESIGN - 20 W, BLANC FROID
NL DESIGN LED-SCHIJNWERPER - 20 W, KOUDWIT
DE DESIGN LED-STRAHLER - 20 W, KALTWEIß
ES PROYECTOR LED DE DISEÑO - 20 W, COLOR BLANCO FRÍO

floodlight for commercial or residential use • die-cast aluminium housing with tempered glass
• ultra-thin design • with adjustable bracket • with 50 cm unterminated cable • suited for outdoor use (IP65) • energy efficiency index (EEI): A

body colour: silver grey • electrical data: ◦ power LED module: 16 x SMD 1.21 W LED ◦ total nominal power: 22 W ◦ nominal voltage driver: 230 VAC ◦ nominal voltage LED module: 32,5 V ◦ power factor: 0,59 ◦ energy consumption kWh/1000 h: 22 ◦ cable: H05RN-F 3G1.0 - 50 cm • light technical data: ◦ colour: cold white ◦ colour temperature: 6500 K ◦ beam angle: 100° ◦ luminous flux: 1400 lm ◦ colour rendering index: 83 ◦ starting time: < 0.5 s ◦ warm-up time (60 %): < 1 s • lifespan: ◦ nominal life time: 36 000 h ◦ number of switching cycles: 18 000 • dimensions & weight: ◦ dimensions (W x H x D): ◦ spot: 185 x 135 x 27 mm ◦ incl. bracket: 213 x 135 x 105 mm ◦ cable length: ± 50 cm ◦ weight: 900 g



► May not be sold in Ireland, United Kingdom



LEDA402CW-SG



5 410329 593957



DESIGN LED FLOODLIGHT - 20 W, COLD WHITE

PEREL®

FR PROJECTEUR LED DESIGN - 20 W, BLANC FROID
NL DESIGN LED-SCHIJNWERPER - 20 W, KOUDWIT
DE DESIGN LED-STRAHLER - 20 W, KALTWEIß
ES PROYECTOR LED DE DISEÑO - 20 W, COLOR BLANCO FRÍO

floodlight for commercial or residential use • die-cast aluminium housing with tempered glass
• ultra-thin design • with adjustable bracket • with 50 cm unterminated cable • suited for outdoor use (IP65) • energy efficiency index (EEI): A

body colour: white • electrical data: ◦ power LED module: 16 x SMD 1.21 W LED ◦ total nominal power: 22 W ◦ nominal voltage driver: 230 VAC ◦ nominal voltage LED module: 32,5 V ◦ power factor: 0,59 ◦ energy consumption kWh/1000 h: 22 ◦ cable: H05RN-F 3G1.0 - 50 cm • light technical data: ◦ colour: cold white ◦ colour temperature: 6500 K ◦ beam angle: 100° ◦ luminous flux: 1400 lm ◦ colour rendering index: 83 ◦ starting time: < 0.5 s ◦ warm-up time (60 %): < 1 s • lifespan: ◦ nominal life time: 36 000 h ◦ number of switching cycles: 18 000 • dimensions & weight: ◦ dimensions (W x H x D): ◦ spot: 185 x 135 x 27 mm ◦ incl. bracket: 213 x 135 x 105 mm ◦ cable length: ± 50 cm ◦ weight: 900 g



► May not be sold in Ireland, United Kingdom



LEDA402CW-W



5 410329 593964



DESIGN LED FLOODLIGHT - 20 W, NEUTRAL WHITE

PEREL®

FR PROJECTEUR LED DESIGN - 20 W, BLANC NEUTRE
NL DESIGN LED-SCHIJNWERPER - 20 W, NEUTRAALWIT
DE DESIGN LED-STRAHLER - 20 W, NEUTRALWEIß
ES PROYECTOR LED DE DISEÑO - 20 W, COLOR BLANCO NEUTRO

floodlight for commercial or residential use • die-cast aluminium housing with tempered glass
• ultra-thin design • with adjustable bracket • with 50 cm unterminated cable • suited for outdoor use (IP65) • energy efficiency index (EEI): A

body colour: matte black • electrical data: ◦ power LED module: 16 x SMD 1.21 W LED ◦ total nominal power: 22 W ◦ nominal voltage driver: 230 VAC ◦ nominal voltage LED module: 32,5 V ◦ power factor: 0,59 ◦ energy consumption kWh/1000 h: 22 ◦ cable: H05RN-F 3G1.0 - 50 cm • light technical data: ◦ colour: neutral white ◦ colour temperature: 4000 K ◦ beam angle: 100° ◦ luminous flux: 1400 lm ◦ colour rendering index: 83 ◦ starting time: < 0.5 s ◦ warm-up time (60 %): < 1 s • lifespan: ◦ nominal life time: 36 000 h ◦ number of switching cycles: 18 000 • dimensions & weight: ◦ dimensions (W x H x D): ◦ spot: 185 x 135 x 27 mm ◦ incl. bracket: 213 x 135 x 105 mm ◦ cable length: ± 50 cm ◦ weight: 900 g



► May not be sold in Ireland, United Kingdom



LEDA402NW-B



5 410329 593971



**DESIGN LED FLOODLIGHT
- 20 W, NEUTRAL WHITE**



FR PROJECTEUR LED DESIGN - 20 W, BLANC NEUTRE
NL DESIGN LED-SCHIJNWERPER - 20 W, NEUTRALWIT
DE DESIGN LED-STRAHLER - 20 W, NEUTRALWEIß
ES PROYECTOR LED DE DISEÑO - 20 W, COLOR BLANCO NEUTRO

floodlight for commercial or residential use • die-cast aluminium housing with tempered glass
• ultra-thin design • with adjustable bracket • with 50 cm unterminated cable • suited for outdoor use (IP65) • energy efficiency index (EEI): A

body colour: silver grey • electrical data: ◦ power LED module: 16 x SMD 1.21 W LED ◦ total nominal power: 22 W ◦ nominal voltage driver: 230 VAC ◦ nominal voltage LED module: 32.5 V ◦ power factor: 0.59 ◦ energy consumption kWh/1000 h: 22 ◦ cable: H05RN-F 3G1.0 - 50 cm • light technical data: ◦ colour: neutral white ◦ colour temperature: 4000 K ◦ beam angle: 100° ◦ luminous flux: 1400 lm ◦ colour rendering index: 83 ◦ starting time: < 0.5 s ◦ warm-up time (60 %): < 1 s • lifespan: ◦ nominal life time: 36 000 h ◦ number of switching cycles: 18 000 • dimensions & weight: ◦ dimensions (W x H x D): ◦ spot: 185 x 135 x 27 mm ◦ incl. bracket: 213 x 135 x 105 mm ◦ cable length: ± 50 cm ◦ weight: 900 g



► May not be sold in Ireland, United Kingdom



LEDA402NW-SG



5 410329 593988



**DESIGN LED FLOODLIGHT
- 20 W, NEUTRAL WHITE**



FR PROJECTEUR LED DESIGN - 20 W, BLANC NEUTRE
NL DESIGN LED-SCHIJNWERPER - 20 W, NEUTRALWIT
DE DESIGN LED-STRAHLER - 20 W, NEUTRALWEIß
ES PROYECTOR LED DE DISEÑO - 20 W, COLOR BLANCO NEUTRO

floodlight for commercial or residential use • die-cast aluminium housing with tempered glass
• ultra-thin design • with adjustable bracket • with 50 cm unterminated cable • suited for outdoor use (IP65) • energy efficiency index (EEI): A

body colour: white • electrical data: ◦ power LED module: 16 x SMD 1.3 W LED ◦ total nominal power: 22 W ◦ nominal voltage driver: 230 VAC ◦ nominal voltage LED module: 32.5 V ◦ power factor: 0.59 ◦ energy consumption kWh/1000 h: 22 ◦ cable: H05RN-F 3G1.0 - 50 cm • light technical data: ◦ colour: neutral white ◦ colour temperature: 4000 K ◦ beam angle: 100° ◦ luminous flux: 1400 lm ◦ colour rendering index: 83 ◦ starting time: < 0.5 s ◦ warm-up time (60 %): < 1 s • lifespan: ◦ nominal life time: 36 000 h ◦ number of switching cycles: 18 000 • dimensions & weight: ◦ dimensions (W x H x D): ◦ spot: 185 x 135 x 27 mm ◦ incl. bracket: 213 x 135 x 105 mm ◦ cable length: ± 50 cm ◦ weight: 900 g



► May not be sold in Ireland, United Kingdom



LEDA402NW-W



5 410329 593995



**DESIGN LED FLOODLIGHT
- 20 W, WARM WHITE**



FR PROJECTEUR LED DESIGN - 20 W, BLANC CHAUD
NL DESIGN LED-SCHIJNWERPER - 20 W, WARMWIT
DE DESIGN LED-STRAHLER - 20 W, WARMWEIß
ES PROYECTOR LED DE DISEÑO - 20 W, COLOR BLANCO CÁLIDO

floodlight for commercial or residential use • die-cast aluminium housing with tempered glass
• ultra-thin design • with adjustable bracket • with 50 cm unterminated cable • suited for outdoor use (IP65) • energy efficiency index (EEI): A

body colour: matte black • electrical data: ◦ power LED module: 16 x SMD 1.21 W LED ◦ total nominal power: 22 W ◦ nominal voltage driver: 230 VAC ◦ nominal voltage LED module: 32.5 V ◦ power factor: 0.59 ◦ energy consumption kWh/1000 h: 22 ◦ cable: H05RN-F 3G1.0 - 50 cm • light technical data: ◦ colour: warm white ◦ colour temperature: 3000 K ◦ beam angle: 100° ◦ luminous flux: 1400 lm ◦ colour rendering index: 83 ◦ starting time: < 0.5 s ◦ warm-up time (60 %): < 1 s • lifespan: ◦ nominal life time: 36 000 h ◦ number of switching cycles: 18 000 • dimensions & weight: ◦ dimensions (W x H x D): ◦ spot: 185 x 135 x 27 mm ◦ incl. bracket: 213 x 135 x 105 mm ◦ cable length: ± 50 cm ◦ weight: 900 g



► May not be sold in Ireland, United Kingdom



LEDA402WW-B



5 410329 594008



DESIGN LED FLOODLIGHT - 20 W, WARM WHITE

PEREL®

FR PROJECTEUR LED DESIGN - 20 W, BLANC CHAUD
NL DESIGN LED-SCHIJNWERPER - 20 W, WARMWIT
DE DESIGN LED-STRAHLER - 20 W, WARMWEIß
ES PROYECTOR LED DE DISEÑO - 20 W, COLOR BLANCO CÁLIDO

floodlight for commercial or residential use • die-cast aluminium housing with tempered glass
• ultra-thin design • with adjustable bracket • with 50 cm unterminated cable • suited for outdoor use (IP65) • energy efficiency index (EEI): A

body colour: silver grey • electrical data: ◦ power LED module: 16 x SMD 1.3 W LED ◦ total nominal power: 22 W ◦ nominal voltage driver: 230 VAC ◦ nominal voltage LED module: 32,5 V ◦ power factor: 0,59 ◦ energy consumption kWh/1000 h: 22 ◦ cable: H05RN-F 3G1.0 - 50 cm • light technical data: ◦ colour: warm white ◦ colour temperature: 3000 K ◦ beam angle: 100° ◦ luminous flux: 1400 lm ◦ colour rendering index: 83 ◦ starting time: < 0.5 s ◦ warm-up time (60 %): < 1 s • lifespan: ◦ nominal life time: 36 000 h ◦ number of switching cycles: 18 000 • dimensions & weight: ◦ dimensions (W x H x D): ◦ spot: 185 x 135 x 27 mm ◦ incl. bracket: 213 x 135 x 105 mm ◦ cable length: ± 50 cm ◦ weight: 900 g



► May not be sold in Ireland, United Kingdom



LEDA402WW-SG



5 410329 594015



DESIGN LED FLOODLIGHT - 20 W, WARM WHITE

PEREL®

FR PROJECTEUR LED DESIGN - 20 W, BLANC CHAUD
NL DESIGN LED-SCHIJNWERPER - 20 W, WARMWIT
DE DESIGN LED-STRAHLER - 20 W, WARMWEIß
ES PROYECTOR LED DE DISEÑO - 20 W, COLOR BLANCO CÁLIDO

floodlight for commercial or residential use • die-cast aluminium housing with tempered glass
• ultra-thin design • with adjustable bracket • with 50 cm unterminated cable • suited for outdoor use (IP65) • energy efficiency index (EEI): A

body colour: white • electrical data: ◦ power LED module: 16 x SMD 1.21 W LED ◦ total nominal power: 22 W ◦ nominal voltage driver: 230 VAC ◦ nominal voltage LED module: 32,5 V ◦ power factor: 0,59 ◦ energy consumption kWh/1000 h: 22 ◦ cable: H05RN-F 3G1.0 - 50 cm • light technical data: ◦ colour: warm white ◦ colour temperature: 3000 K ◦ beam angle: 100° ◦ luminous flux: 1400 lm ◦ colour rendering index: 83 ◦ starting time: < 0.5 s ◦ warm-up time (60 %): < 1 s • lifespan: ◦ nominal life time: 36 000 h ◦ number of switching cycles: 18 000 • dimensions & weight: ◦ dimensions (W x H x D): ◦ spot: 185 x 135 x 27 mm ◦ incl. bracket: 213 x 135 x 105 mm ◦ cable length: ± 50 cm ◦ weight: 900 g



► May not be sold in Ireland, United Kingdom



LEDA402WW-W



5 410329 594022



LED EXTERIOR STAINLESS STEEL WALL LIGHT - 230 V - IP44



FR LAMPE D'EXTÉRIEUR MURALE À LED (ACIER INOXYDABLE) - 230 V - IP44

NL LED BUITENWANDLAMP (ROESTVRIJ STAAL) - 230 V - IP44

DE LED-AUßENWANDLEUCHTE (EDELSTAHL) - 230 V - IP44

ES LÁMPARA LED MURAL PARA EXTERIORES (ACERO INOXIDABLE) - 230 V - IP44

illumination of outdoor walls, etc. • the spotlight offers a comprehensive range of lighting options • makes an ideal, easy to install solution for many lighting applications • stainless steel with glass diffuser • IP44 rated • low power consumption, high power output

power supply: 230 VAC 50 Hz • power consumption: - • LED: 1 x 1 W high power LED
• colour temperature: 6500 K • luminous flux: 140 lm • dimensions: Ø 60 x 100 mm (85 x 115 mm mounting system incl.) • weight: 335 g



LEDA201



5 410329 465742



**LED EXTERIOR STAINLESS STEEL
DOUBLE WALL LIGHT - 230 V - IP44**



FR LAMPE D'EXTÉRIEUR MURALE À LED - DOUBLE FAISCEAU - 230 V - IP44

NL LED BUITENWANDLAMP (ROESTVRIJ STAAL) - DUBBEL - 230 V - IP44

DE LED-AUßENWANDLEUCHTE (EDELSTAHL) - BEIDSEITIGER LICHTAUSTRITT - 230 V - IP44

ES LÁMPARA LED MURAL PARA EXTERIORES (ACERO INOXIDABLE) - DIFUSIÓN HACIA ARRIBA Y HACIA ABAJO - 230 V - IP44

stainless steel structure with diffuser at each end • it allows the light to diffuse out at opposite ends and create a unique appearance • makes an ideal, easy to install solution for many lighting applications • IP44 rated • low power consumption, high power output

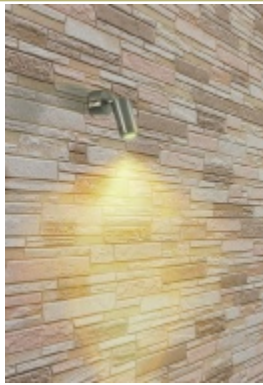
power supply: 230 VAC 50 Hz • power consumption: - • LED: 1 x 1 W high power LED
• colour temperature: 6500 K • luminous flux: 280 lm • dimensions: Ø 44 x 250 mm (80 x 250 mm mounting system incl.) • weight: 565 g



LEDA202



5 410329 465759



**LED EXTERIOR STAINLESS STEEL
WALL LIGHT - 230 V - IP44**



FR LAMPE D'EXTÉRIEUR MURALE À LED - 230 V - IP44

NL LED BUITENWANDLAMP (ROESTVRIJ STAAL) - 230 V - IP44

DE LED-AUßENWANDLEUCHTE (EDELSTAHL) - 230 V - IP44

ES LÁMPARA LED MURAL PARA EXTERIORES (ACERO INOXIDABLE) - 230 V - IP44

illumination of outdoor walls, etc. • the spotlight offers a comprehensive range of lighting options • makes an ideal, easy to install solution for many lighting applications • stainless steel with glass diffuser • IP44 rated • low power consumption, high power output

power supply: 230 VAC 50 Hz • power consumption: - • LED: 1 x 1 W high power LED
• colour temperature: 6500 K • luminous flux: 140 lm • dimensions: Ø 60 x 100 mm (85 x 115 mm mounting system incl.) • weight: 445 g



LEDA203



5 410329 473013



WORK LIGHTS

PROJECTEURS DE CHANTIER
WERKLAMPEN
ARBEITSLEUCHTEN
LÁMPARAS PORTÁTILES



**30 LED RECHARGEABLE
WORK LAMP**



FR BALADEUSE RECHARGEABLE À 30 LED

NL HERLAADBARE LOOPLAMP - 30 LEDS

DE WIEDERAUFLADBARE ARBEITSLEUCHTE - 30 LEDS

ES LÁMPARA PORTÁTIL RECARGABLE - 30 LEDS

very sturdy, shock & knock resistant • heavy-duty rubberized ABS casing • splashproof
• sturdy stainless steel 360° swivel hanging hook • on/off soft-touch button • comes with charging station • operates for 5h from a full charge (fully charged after 5h) • charge indication LED

luminosity: 13 000 - 15 000 mcd • number of LEDs: 30 • battery: 4 x Ni-MH 1.2 V, 1800 mAh
• charger: ◊ input: 230 VAC 50 Hz, 6 W ◊ output: 7.5 VDC, 350 mA • dimensions: 28.3 x 5.7 x 4.4 cm • weight: 435 g • colour temperature: 7500 - 9000 K • lifespan: 80000 h
• switching cycles: 5000 cycles • warm up time: 5 h • luminous flux: 430 lux • beam angle: 15°



EWL23



5 410329 446024



27 LED RECHARGEABLE WORK LAMP

PEREL®

FR BALADEUSE RECHARGEABLE À 27 LED
NL HERLAADBARE LOOPLAMP - 27 LEDS
DE WIEDERAUFLADBARE ARBEITSLEUCHTE - 27 LEDS
ES LÁMPARA PORTÁTIL RECARGABLE - 27 LEDS

very sturdy, shock & knock resistant • compact size with retractable body: LEDs turn ON when 2/3 of LED area is pulled open • heavy-duty rubberized ABS casing • strong magnetic base • splashproof • sturdy 360° swivel hanging hook • swivel retractable hook in base for handsfree use; can also be used as stand • charging: comes with 230Vac adaptor and 12Vdc car adaptor • operates for 5h from a full charge (fully charged after 5h) • charge indication LED

luminescence: 13,000 ~ 15,000mcd • number of LEDs: 27 super bright LEDs • battery: 6x Ni-MH 1.2V, 800mAh • charger: ◦ input: 230Vac/50Hz, 6W ◦ output: 9.6Vdc, 300mA • dimensions: ◦ closed: 19.5 x 5 x 4cm ◦ open: 29.5 x 5 x 4cm • weight: 290g



EWL24



5 410329 450175



26 + 9 LED RECHARGEABLE WORK LAMP

PEREL®

FR BALADEUSE RECHARGEABLE À 26 + 9 LED
NL HERLAADBARE LOOPLAMP - 26 + 9 LEDS
DE WIEDERAUFLADBARE ARBEITSLEUCHTE - 26 + 9 LEDS
ES LÁMPARA PORTÁTIL RECARGABLE - 26 + 9 LEDS

very sturdy, shock & knock resistant • top part & grip: heavy-duty rubberized ABS • strong magnetic clip • IP66 waterproof • hanging hook • settings: 26 LEDs on - 26 LEDs flashing - 9 LEDs on - off • charging: comes with 230Vac adaptor and 12Vdc car adaptor • operates for 4h from a full charge (fully charged after 3-4h) • charge indication LED • overcharge and overdischarge protection • before using this item make sure it is fully charged

luminescence: 13,000mcd • number of LEDs: 26 + 9 super bright LEDs • battery: Ni-MH 4.8V, 1200mAh • charger: ◦ input: 230Vac/50Hz, 6W ◦ output: 9Vdc, 300mA • dimensions: 41 x 5.5cm • weight: 430g



EWL25



5 410329 454272



LED SPOTLIGHT - 24 LEDS - 3 x AA BATTERIES

Toolland
a land of possibilities

FR SPOT LED - 24 LED - 3 x PILES AA
NL LED-ZAKLAMP - 24 LEDS - 3 X AA BATTERIJ
DE LED-HANDSCHEINWERFER - 24 LEDS - 3 x AA-BATTERIE
ES PROYECTOR LED - 24 LEDS - 3 x PILAAA

with hang hook

number of LEDs: 24 • power supply: 3 x AA batteries



PM6635



5 411244 663503



12 SMD LED RECHARGEABLE WORK LAMP

PEREL®

FR BALADEUSE RECHARGEABLE - 12 LEDS smS
NL HERLAADBARE LOOPLAMP - 12 SMD LEDS
DE WIEDERAUFLADBARE ARBEITSLEUCHTE - 12 SMD-LEDs
ES LÁMPARA PORTÁTIL RECARGABLE - 12 LEDS SMD

12 Super bright white 5630 SMD LED's • very sturdy, shock & knock resistant • high impact ABS plastic with softtouch finish • powerful magnet at the backside • 360° swivel hanging hook • charging: comes with 230Vac adaptor and 12Vdc car adaptor • operates for 2h from a full charge (fully charged after 6h) • charge indication LED • incl. handsfree stand • before using this item make sure it is fully charged

power LED module: 12 x 5630 SMD (0,5W) LED • battery: Li-on 3.7V, 2200mAh • charger: ◦ input: 230V ~ 50Hz, 6W ◦ output: 5Vdc, 500mA • light technical data: ◦ colour: cold white ◦ colour temperature: 6500-7000 K ◦ beam angle: 120° ◦ luminous intensity: - ◦ luminous flux: 400 lm ◦ colour rendering index: >80 ◦ starting time: <0,5s ◦ warm-up time (60 %): <0,5s • lifespan: ◦ nominal life time: 100,000h ◦ number of switching cycles: 15,000 • dimensions: 32,5 x 3,8 x 2,7cm • weight: 229g



EWL30



5 410329 475833



3 W COB LED + 7 LED RECHARGEABLE INSPECTION LAMP

PEREL®

FR LED COB 3 W + LAMPE D'INSPECTION RECHARGEABLE À 7 LED
 NL 3 W COB LED + HERLAADBARE INSPECTIELAMP MET 7 LED'S
 DE 3 W COB LED + 7 LED AKKU STABLEUCHTE
 ES LED COB 3 W + LINTERNA DE INSPECCIÓN RECARGABLE CON 7 LED'S

super bright white 3 W COB LED with 120° beam angle • 7 LED top torch • very sturdy, shock & knock resistant • high impact ABS plastic with soft touch finish • 2 powerful magnets at the backside & 1 strong magnet at the base • 180° swivelling magnetic base • with 2 nylon 360° swivel fold-out hanging hooks • charging: comes with 230 VAC adapter • operates for 3 h from a full charge (fully charged after 4.5 h) • charge indication LED

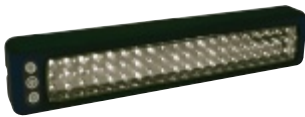
power LED module: ◦ front: super bright white 3 W COB ◦ top: 7 LED • battery: Li-on 3.7 V, 2000 mAh • charger: ◦ input: 230VAC 50Hz, 6W ◦ output: 5 VDC, 500 mA • light technical data: ◦ colour: cold white ◦ colour temperature: 6500 K ◦ beam angle: 120° ◦ luminous intensity: ◦ luminous flux: 280 lm ◦ colour rendering index: >80 ◦ starting time: <0.5 s ◦ warm-up time (60 %): <0.5 s • lifespan: ◦ nominal life time: 100,000 h ◦ number of switching cycles: 15,000 • dimensions: 5.7 x 25.5 x 4.5 cm • weight: 316 g



EWL37



5 410329 602550



MULTIPURPOSE UTILITY LIGHT - 60 LEDs

PEREL®

FR ÉCLAIRAGE D'APPOINT MAGNÉTIQUE MULTIFONCTIONS - 60 LED
 NL MAGNETISCHE WERK LEDLAMP (NOODVERLICHTING) - 60 LED'S
 DE MAGNETISCHE ARBEITSLEUCHTE (NOTLEUCHTE) - 60 LED'S
 ES LÁMPARA MAGNÉTICA (LUZ DE EMERGENCIA) - 60 LED'S

suitable for: ◦ car, truck, boat, camping ◦ emergency roadside repairs • strong magnets on reverse for attaching to metal surfaces • swivel hooks adjusts to different angles • shock resistant • with on/off switch • adjustable brightness

housing: ABS with soft finish • luminous intensity: 12,000mcd • LEDs: ◦ number: 60 ◦ lifetime: 50,000hrs • power supply: 6 x 1.5V AAA Batteries (not incl.) • battery lifetime: 10-15h • dimensions: 28.5 x 5.5 x 3cm • weight: ±230g (without batteries)



EWL15



5 410329 414108



MULTIPURPOSE UTILITY LIGHT - 72 LEDs

PEREL®

FR ÉCLAIRAGE DE SECOURS MULTIFONCTIONS - 72 LED
 NL MAGNETISCHE WERK LEDLAMP (NOODVERLICHTING) - 72 LED'S
 DE MAGNETISCHE CAMPINGLEUCHTE MIT HAKEN - 72 LED'S
 ES ILUMINACIÓN DE CAMPING MAGNÉTICA CON GANCHOS - 72 LED'S

suitable for: ◦ car, truck, boat, camping ◦ emergency roadside repairs • magnets on reverse for attaching to metal surfaces • swivel hook adjusts to different angles • shock resistant • with on/off switch

housing: ABS with soft finish • luminous intensity: 13,000-15,000mcd • LEDs: ◦ number: 72 ◦ lifetime: 50,000hrs • power supply: 4 x 1.5V AA Batteries (not incl.) • battery lifetime: 10-15h • dimensions: 220 x 58 x 35 mm • weight: ±150g (without batteries)



EWL27



5 410329 454371



LED SPOTLIGHT - 60 LEDs - RECHARGEABLE BATTERY

Toolland
a land of possibilities

FR SPOT LED - 60 LED - PILE RECHARGEABLE
 NL LED-LOOPLAMP - 60 LED'S - OPLAADBARE ACCU
 DE LED-HANDSCHEINWERFER - 60 LED'S - AKKU
 ES PROYECTOR LED - 60 LED'S - BATERÍA RECARGABLE

rechargeable battery • hang hook • with on/off switch

weight: 260 gr • number of LEDs: 60



PM6625



5 411244 662506



RECHARGEABLE LED WORK LIGHT- 60 LEDs

PEREL®

FR BALADEUSE RECHARGEABLE À LEDS - 60 LEDs
NL HERLAADBARE LED LOOPLAMP - 60 LEDs
DE WIEDERAUFLADBARE LED-ARBEITSLEUCHTE, 60 LEDs
ES LÁMPARA LED PORTÁTIL RECARGABLE, 60 LEDs

excellent light output and ultra-low power consumption • with suspension hook • comes with 6V - 230VAC/50Hz PSU and 12V car adapter

charging time: 1.5h (for 4-5h of full-power light emission) • dimensions: Ø55 x 370mm
• weight: 750g



EWL09N



5 410329 401313



FLUORESCENT WORKING LAMP

PEREL®

FR BALADEUSE TUBE NEON
NL TL-WERKLAMP
DE LEUCHTSTOFF-ARBEITSLEUCHTE
ES LÁMPARA FLUORESCENTE

power supply: 230Vac / 8W • dimensions: Ø25 x 400mm • cable: H05RN-F 2G0.75 - 5m



EFL01N



5 410329 466732



PORTABLE LAMP WITH METAL BASKET

PEREL®

FR BALADEUSE AVEC GRILLE MÉTALLIQUE
NL LOOPLAMP MET METALEN KORF
DE HANDLEUCHTE MIT METALL-SCHUTZKORB
ES LÁMPARA PORTÁTIL CON REJILLA DE METAL

metal basket with aluminium reflector • with waterproof switch

cable length: 5m • power supply: 230VAC / 50Hz • socket type: E27 • max. lamp power: 60W (lamp not included)



EWL06N



5 410329 454487



PORTABLE LAMP WITH PROTECTIVE GLASS AND METAL BASKET

PEREL®

FR BALADEUSE AVEC VERRE DE PROTECTION ET GRILLE MÉTALLIQUE
NL LOOPLAMP MET BESCHERMGLAS EN METALEN KORF
DE HANDLEUCHTE MIT SCHUTZGLAS UND METALL-SCHUTZKORB
ES LÁMPARA PORTÁTIL CON CRISTAL PROTECTOR Y REJILLA DE METAL

with rubber grip • with protective glass • metal basket

cable: H05RN-F 2G1.0 • cable length: 5m • power supply: 230VAC / 50Hz • socket type: E27 • max. lamp power: 60W (lamp not included)



EWL07N



5 410329 450182



PORTABLE LED WORK LIGHT - 10 W EPISTAR CHIP - 6500 K

PEREL®

FR PROJECTEUR DE CHANTIER PORTABLE À LED - 10 W EPISTAR CHIP - 6500 K
NL DRAAGBARE LED-WERKLAMP - 10 W EPISTAR CHIP - 6500 K
DE LED-ARBEITSLEUCHTE - 10 W EPISTAR CHIP - 6500 K
ES LÁMPARA LED PORTÁTIL - 10 W EPISTAR CHIP - 6500 K

die-cast aluminium housing with tempered glass • ribbed for maximum heat dissipation
• handle with soft-grip foam protection • suited for outdoor use (IP65) • cable length: 1.5 m

power supply: 230 VAC • max. power consumption: 11.5 W • LED: 10 W COB Epistar
• body colour: grey • colour temperature: 6500 K • beam angle: 120° • luminous flux: 600 lm • cable: H05RN-F 3G1.0, 1.5 m • dimensions (W x H x D): 190 x 260 x 160 mm
• weight: +/-1050 g



► May not be sold in The Netherlands



EWL311



5 410329 591915